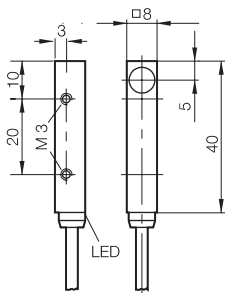
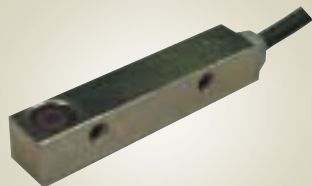


M8 x M8, 2mm Top Sensing, DC

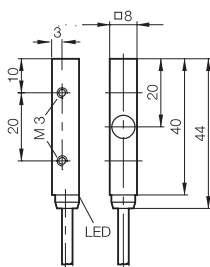
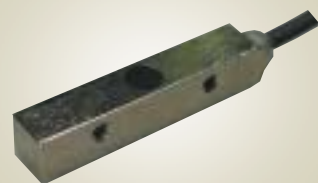


A flush mounted inductive proximity sensor in a 8mm square housing, designed to sense ferrous & non-ferrous metals, featuring short circuit & reverse polarity protection. This sensor is ideal for automation & handling applications.

Housing size	8mm x 8mm x 40mm (flush)
Nominal sensing range	2mm (steel), reduced for other metals
Supply voltage	10-30 volt DC
Rated output current	200 mA (transistor)
Off-state current	80 µAmp
Temperature	-25 to +70°C
Frequency	1000 Hz
Built in LED	Yes
IP Rating	IP65
Body material	Nickel plated zinc
Connection type	Pre-wired 3 core (0.14mm ²) PVC cable, 5M (brown/+ve, black/output, blue/-ve)

Stock No.	Manf Ref'	Type	Unit Price		
			1-4	5-9	10-24
2668166	BESQ08ZCPSC20BBV5	PNP N/O	38.15	37.01	35.86

M8 x M8, 2mm Mid Sensing, DC

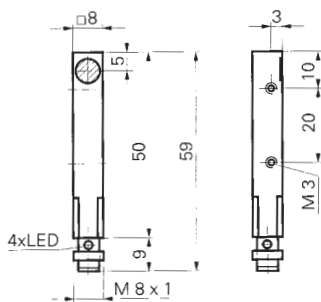


A flush mounted inductive proximity sensor in a 8mm square housing, designed to sense ferrous & non-ferrous metals, featuring short circuit & reverse polarity protection. This sensor is ideal for automation & handling applications.

Housing size	8mm x 8mm x 44mm (flush)
Nominal sensing range	2mm (steel), reduced for other metals
Supply voltage	10-30 volt DC
Rated output current	200 mA (transistor)
Off-state current	80 µAmp
Temperature	-25 to +70°C
Frequency	1000 Hz
Built in LED	Yes
IP Rating	IP65
Body material	Nickel plated zinc
Connection type	Pre-wired 3 core (0.14mm ²) PVC cable, 5M (brown/+ve, black/output, blue/-ve)

Stock No.	Manf Ref'	Type	Unit Price		
			1-4	5-9	10-24
2668169	BESQ08ZEPSC20BBV5	PNP N/O	38.15	37.01	35.86

M8 x M8, 2mm Sensing, DC High Speed

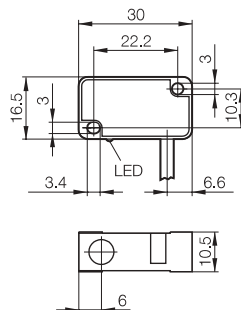


An inductive proximity sensor in a 8mm square housing, designed to sense ferrous & non-ferrous metals, featuring short circuit & reverse polarity protection. This sensor is ideal for automation & handling applications.

Housing size	8mm x 8mm, 59mm long
Nominal sensing range	2mm (steel), reduced for other metals
Supply voltage	10-30 volt DC
Rated output current	200 mA (transistor)
Temperature	-25 to +75°C
Frequency	1000 Hz
Built in LED	4 quadrant LED red
IP Rating	IP67
Body material	Nickel plated brass
Connection type	M8 connector, 3 wire type (brown/+ve, black/output, blue/-ve)

Stock No.	Manf Ref'	Type	Unit Price		
			1-4	5-9	10-24
1501202	IFFM08P1701/O1S35L	PNP N/O	58.38	56.63	54.88

V3 Style, 2mm Sensing, DC

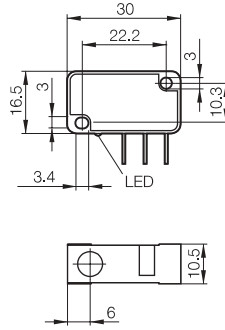
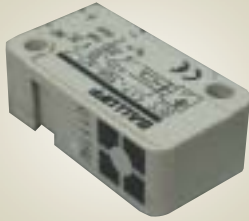


A flush mounted inductive proximity sensor in a V3 style housing, designed to sense ferrous & non-ferrous metals, featuring short circuit & reverse polarity protection. This sensor is ideal for automation & handling applications.

Housing size	16.5mm x 30mm x 10mm (flush)
Nominal sensing range	2mm (steel), reduced for other metals
Supply voltage	10-30 volt DC
Rated output current	200 mA (transistor)
Off-state current	80 µAmp
Temperature	-25 to +70°C
Frequency	1500 Hz
Built in LED	Yes
IP Rating	IP65
Body material	Fibreglass reinforced polyester
Connection type	Pre-wired 3 core (0.14mm ²) PVC cable, 3M (brown/+ve, black/output, blue/-ve)

Stock No.	Manf Ref'	Type	Unit Price		
			1-4	5-9	10-24
2668148	BES517398NOC3	PNP N/O	28.93	28.06	27.19
2668139	BES517352NOL3	NPN N/C	30.18	29.27	28.37

V3 Style, 2mm Sensing, DC

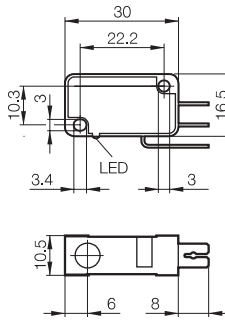


A flush mounted inductive proximity sensor in a V3 style housing, designed to sense ferrous & non-ferrous metals, featuring short circuit & reverse polarity protection. This sensor is ideal for automation & handling applications.

Housing size	16.5mm x 30mm x 10mm (flush)
Nominal sensing range	2mm (steel), reduced for other metals
Supply voltage	10-30 volt DC
Rated output current	200 mA (transistor)
Off-state current	80 µAmp
Temperature	-25 to +70°C
Frequency	1500 Hz
Built in LED	Yes
IP Rating	IP65
Body material	Fibreglass reinforced polyester
Connection type	6.3mm spade terminals

Stock No.	Manf Ref ¹	Type	Unit Price		
			1-4	5-9	10-24
2668142	BES517398N1L	PNP N/O	28.48	27.63	26.77
2668151	BES517399N1L	NPN N/O	28.48	27.63	26.77

V3 Style, 2mm Sensing, DC

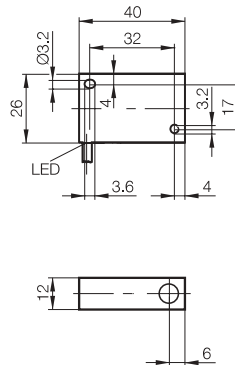
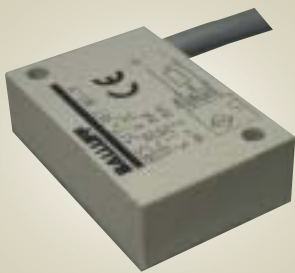


A flush mounted inductive proximity sensor in a V3 style housing, designed to sense ferrous & non-ferrous metals, featuring short circuit & reverse polarity protection. This sensor is ideal for automation & handling applications.

Housing size	16.5mm x 30mm x 10mm (flush)
Nominal sensing range	2mm (steel), reduced for other metals
Supply voltage	10-30 volt DC
Rated output current	200 mA (transistor)
Off-state current	80 µAmp
Temperature	-25 to +70°C
Frequency	1500 Hz
Built in LED	Yes
IP Rating	IP65
Body material	Fibreglass reinforced polyester
Connection type	6.3mm spade terminals

Stock No.	Manf Ref ¹	Type	Unit Price		
			1-4	5-9	10-24
2668145	BES517398N2L	PNP N/O	29.72	28.83	27.94
2668154	BES517399N2C	NPN N/O	29.72	28.83	27.94

Quadraform
2mm Sensing, DC

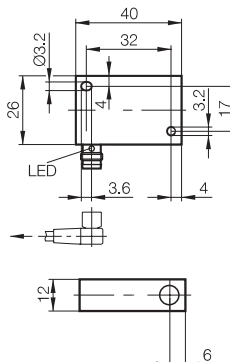
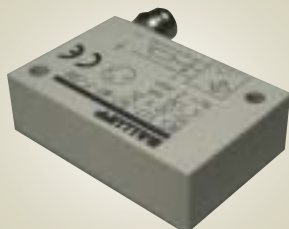


A flush mounted inductive proximity sensor in a quadraform housing, designed to sense ferrous & non-ferrous metals, featuring short circuit & reverse polarity protection. This sensor is ideal for automation & handling applications.

Housing size	26mm x 40mm x 12mm (flush)
Nominal sensing range	2mm (steel), reduced for other metals
Supply voltage	10-30 volt DC
Rated output current	130 mA (transistor)
Off-state current	80 µAmp
Temperature	-25 to +70°C
Frequency	800 Hz
Built in LED	Yes
IP Rating	IP67
Body material	Fibreglass reinforced polyester
Connection type	Pre-wired 3 core (0.34mm ²) PVC cable, 5M (brown/+ve, black/output, blue/-ve)

Stock No.	Manf Ref ¹	Type	Unit Price		
			1-4	5-9	10-24
2668133	BES517347M1Y5	PNP N/O	36.84	35.73	34.63

Quadraform
2mm Sensing, DC



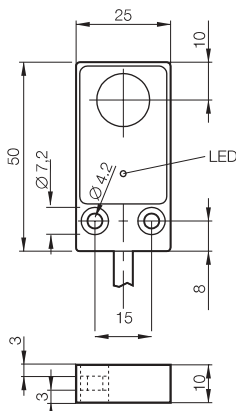
A flush mounted inductive proximity sensor in a quadraform housing, designed to sense ferrous & non-ferrous metals, featuring short circuit & reverse polarity protection. This sensor is ideal for automation & handling applications.

Housing size	26mm x 40mm x 12mm (flush)
Nominal sensing range	2mm (steel), reduced for other metals
Supply voltage	10-30 volt DC
Rated output current	130 mA (transistor)
Off-state current	80 µAmp
Temperature	-25 to +70°C
Frequency	800 Hz
Built in LED	Yes
IP Rating	IP67
Body material	Fibreglass reinforced polyester
Connection type	M8 connector, 3 wire type (brown/+ve, black/output, blue/-ve)

Stock No.	Manf Ref ¹	Type	Unit Price		
			1-4	5-9	10-24
2668136	BES517347M1YS49	PNP N/O	36.84	35.73	34.63

< 20

Quadraform 5mm Sensing, DC

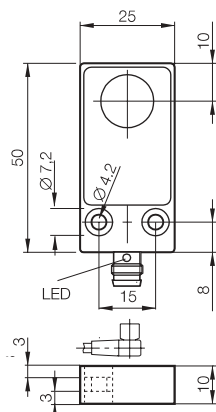


A flush mounted inductive proximity sensor in a quadraform housing, designed to sense ferrous & non-ferrous metals, featuring short circuit & reverse polarity protection. This sensor is ideal for automation & handling applications.

Housing size	25mm x 50mm x 10mm (flush)
Nominal sensing range	5mm (steel), reduced for other metals
Supply voltage	10-30 volt DC
Rated output current	200 mA (transistor)
Off-state current	80 μ Amp
Temperature	-25 to +70°C
Frequency	500 Hz
Built in LED	Yes
IP Rating	IP67
Body material	Aluminium alloy
Connection type	Pre-wired 3 core (0.34mm \Rightarrow) PVC cable, 3M (brown/+ve, black/output, blue/-ve)

Stock No.	Manf Ref'	Type	Unit Price		
			1-4	5-9	10-24
2668016	BES516347MOC3	PNP N/O	42.15	40.89	39.62

Quadraform 5mm Sensing, DC

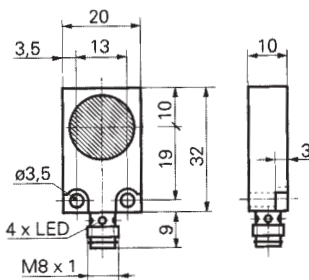


A flush mounted inductive proximity sensor in a quadraform housing, designed to sense ferrous & non-ferrous metals, featuring short circuit & reverse polarity protection. This sensor is ideal for automation & handling applications.

Housing size	25mm x 50mm x 10mm (flush)
Nominal sensing range	5mm (steel), reduced for other metals
Supply voltage	10-30 volt DC
Rated output current	200 mA (transistor)
Off-state current	80 μ Amp
Temperature	-25 to +70°C
Frequency	500 Hz
Built in LED	Yes
IP Rating	IP67
Body material	Aluminium alloy
Connection type	M8 connector, 3 wire type (brown/+ve, black/output, blue/-ve)

Stock No.	Manf Ref'	Type	Unit Price		
			1-4	5-9	10-24
2668019	BES516347MOC349	PNP N/O	42.15	40.89	39.62

Quadraform 5mm Sensing, DC

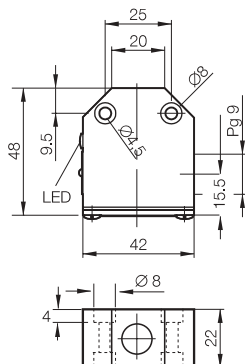
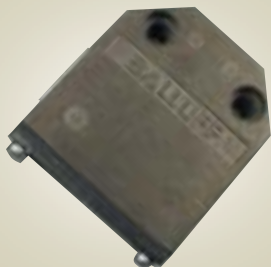


An inductive proximity sensor in an extra flat rectangular housing designed to sense ferrous & non-ferrous metals, featuring short circuit & reverse polarity protection. This sensor is ideal for automation & handling applications.

Housing size	20 x 32 x 10
Nominal sensing range	5mm (steel), reduced for other metals
Supply voltage	10-50 volt DC
Rated output current	200 mA (transistor)
Temperature	-25 to +75°C
Frequency	1000 Hz
Built in LED	4 quadrant LED red
IP Rating	IP67
Body material	Nickel plated brass
Connection type	M8 connector, 3 wire type (brown/+ve, black/output, blue/-ve)

Stock No.	Manf Ref'	Type	Unit Price		
			1-4	5-9	10-24
1501226	IFFM20P1501/S35L	PNP N/O	56.57	54.87	53.18

Quadraform 5mm Sensing, DC

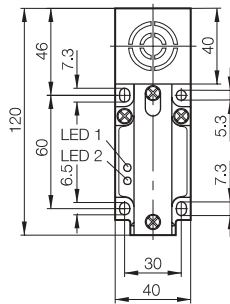
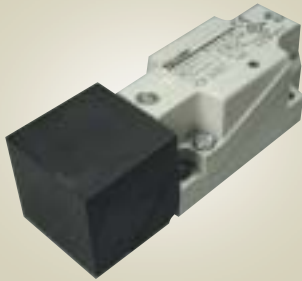


A flush mounted inductive proximity sensor in a quadraform housing, designed to sense ferrous & non-ferrous metals, featuring short circuit & reverse polarity protection. This sensor is ideal for automation & handling applications.

Housing size	42mm x 48mm x 22mm (flush)
Nominal sensing range	5mm (steel), reduced for other metals
Supply voltage	10-30 volt DC
Rated output current	200 mA (transistor)
Off-state current	80 μ Amp
Temperature	-25 to +70 °C
Frequency	500 Hz
Built in LED	Yes
IP Rating	IP67
Body material	Aluminium alloy
Connection type	Screw terminals

Stock No.	Manf Ref'	Type	Unit Price		
			1-4	5-9	10-24
2668013	BES516346H2Y	PNP N/O	53.34	51.74	50.14
2668010	BES516344H2Y	NPN N/O	53.34	51.74	50.14

Quadraform 15mm Sensing, DC

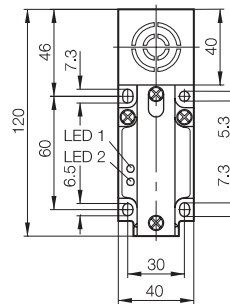
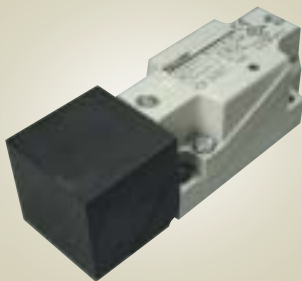


A flush mounted inductive proximity sensor in a quadraform housing, designed to sense ferrous & non-ferrous metals, featuring short circuit & reverse polarity protection. Sensor head is adjustable in 5 different positions through 270° for easy adaptation to any application.

Housing size	40mm x 40mm x 120mm (flush)
Nominal sensing range	15mm (steel), reduced for other metals
Supply voltage	10-55 volt DC
Rated output current	200 mA (transistor)
Off-state current	80 µAmp
Temperature	-25 to +70°C
Frequency	100 Hz
Built in LED's	Sensing & supply voltage indication
IP Rating	IP67
Body material	Fibreglass reinforced polyester
Connection type	Screw terminals

Stock No.	Manf Ref ¹	Type	Unit Price		
			1-4	5-9	10-24
2668112	BES517132M3H	PNP 1N/O+1N/C	34.00	32.98	31.96

Quadraform 20mm Sensing, DC

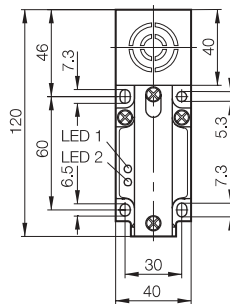
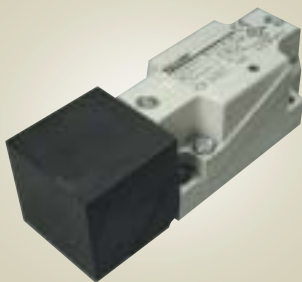


A flush mounted inductive proximity sensor in a quadraform housing, designed to sense ferrous & non-ferrous metals, featuring short circuit & reverse polarity protection. Sensor head is adjustable in 5 different positions through 270° for easy adaptation to any application.

Housing size	40mm x 40mm x 120mm (flush)
Nominal sensing range	20mm (steel), reduced for other metals
Supply voltage	10-55 volt DC
Rated output current	200 mA (transistor)
Off-state current	80 µAmp
Temperature	-25 to +70°C
Frequency	50 Hz
Built in LED's	Sensing & supply voltage indication
IP Rating	IP67
Body material	Fibreglass reinforced polyester
Connection type	Screw terminals

Stock No.	Manf Ref ¹	Type	Unit Price		
			1-4	5-9	10-24
2668115	BES517132M6H	PNP 1N/O+1N/C	51.00	49.47	47.94

Quadraform 40mm Sensing, DC

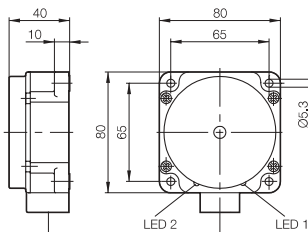


A non flush mounted inductive proximity sensor in a quadraform housing, designed to sense ferrous & non-ferrous metals, featuring short circuit & reverse polarity protection. Sensor head is adjustable in 5 different positions through 270° for easy adaptation to any application.

Housing size	40mm x 40mm x 120mm (non flush)
Nominal sensing range	40mm (steel), reduced for other metals
Supply voltage	10-55 volt DC
Rated output current	200 mA (transistor)
Off-state current	80 µAmp
Temperature	-25 to +70°C
Frequency	50 Hz
Built in LED's	Sensing & supply voltage indication
IP Rating	IP67
Body material	Fibreglass reinforced polyester
Connection type	Screw terminals

Stock No.	Manf Ref ¹	Type	Unit Price		
			1-4	5-9	10-24
2668118	BES517132M7H	PNP 1N/O+1N/C	51.00	49.47	47.94
2668121	BES517134M7H	NPN 1N/O+1N/C	51.00	49.47	47.94

Quadraform 40mm Sensing, DC



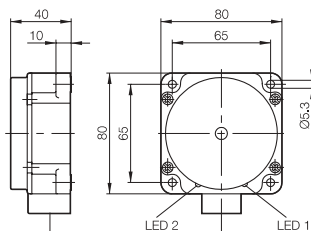
A flush mounted inductive proximity maxi-sensor in a quadraform housing, designed to sense ferrous & non-ferrous metals, featuring short circuit & reverse polarity protection.

Housing size	80mm x 80mm x 40mm (flush)
Nominal sensing range	40mm (steel), reduced for other metals
Supply voltage	10-55 volt DC
Rated output current	200 mA (transistor)
Off-state current	80 µAmp
Temperature	-25 to +70°C
Frequency	50 Hz
Built in LED's	Sensing & supply voltage indication
IP Rating	IP67
Body material	Fibreglass reinforced polyester
Connection type	Screw terminals

Stock No.	Manf Ref ¹	Type	Unit Price		
			1-4	5-9	10-24
2668124	BES517139M4H	PNP 1N/O+1N/C	73.47	71.27	69.06

< 20

Quadraform 50mm Sensing, DC

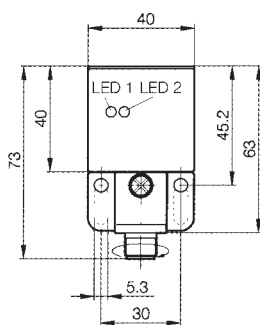


A non flush mounted inductive proximity maxi-sensor in a quadraform housing, designed to sense ferrous & non-ferrous metals, featuring short circuit & reverse polarity protection.

Housing size	80mm x 80mm x 40mm (flush)
Nominal sensing range	50mm (steel), reduced for other metals
Supply voltage	10-55 volt DC
Rated output current	200 mA (transistor)
Off-state current	80 µAmp
Temperature	-25 to +70°C
Frequency	100 Hz
Built in LED's	Sensing & supply voltage indication
IP Rating	IP67
Body material	Fibreglass reinforced polyester
Connection type	Screw terminals

Stock No.	Manf Ref'	Type	Unit Price		
			1-4	5-9	10-24
2668127	BES517139M5H	PNP N/O+1N/C	81.15	78.72	76.28

Quadraform 25mm Sensing, DC

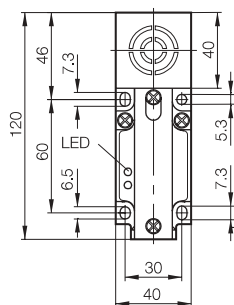
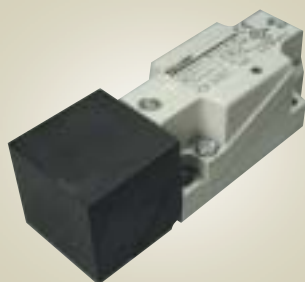


A non flush mounted inductive proximity sensor in a quadraform housing, designed to sense ferrous & non-ferrous metals, including both N/O & N/C outputs in PNP or NPN. The sensor head is adjustable in 5 different positions through 270° for easy adaptation to any application.

Housing size	40mm x 40mm x 73mm (non flush)
Nominal sensing range	25mm (steel), reduced for other metals
Supply voltage	10-55 volt DC
Rated output current	200 mA (transistor)
Off-state current	80 µAmp
Temperature	-25 to +70°C
Frequency	50 Hz
Built in LED's	Sensing & supply voltage indication
IP Rating	IP67
Body material	Fibreglass reinforced polyester
Connection type	M12 connector, 4 wire type (brown/+ve, black/NO output, NC output, blue/-ve)

Stock No.	Manf Ref'	Type	Unit Price		
			1-4	5-9	10-24
2668175	BESQ40KEUPAH25FS04G	PNP	36.90	35.79	34.69
2668172	BESQ40KEUNAH25FS04G	NPN	39.90	38.70	37.51

Quadraform, 15mm Sensing AC/DC

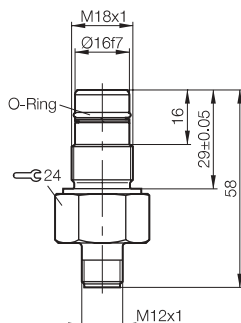


A flush mounted inductive proximity sensor in a 2 wire AC/DC version, designed to sense ferrous & non-ferrous metals. In a quadraform housing, the sensor head is rotatable in 5 different positions through 270° for easy adaptation to any application.

Housing size	40 x 40 x 120 (flush)
Nominal sensing range	15mm (steel), reduced for other metals
Supply voltage	20-250 volt AC/DC
Rated output current	250 mA at 25 °C (transistor)
Off-state current	1.7 mA at 110 volt AC
Temperature	-25 to +70°C
Frequency	100 Hz
Built in LED	Yes
IP Rating	IP67
Body material	Fibreglass reinforced polyester
Connection type	Screw terminals

Stock No.	Manf Ref'	Type	Unit Price		
			1-4	5-9	10-24
2668130	BES517223M3E	1NO+1NC	37.47	36.35	35.22

M18, 3mm Sensing, DC High Pressure



A flush mounted high pressure inductive proximity sensor designed to sense metals under extreme conditions. Pressure tight to 500 bar it is ideal for hydraulic systems & undersea research. Featuring short circuit, overload & polarity reversal protection.

Thread size	M18 (flush)
Nominal sensing range	3mm (steel), reduced for other metals
Supply voltage	10-30 volt DC
Rated output current	130 mA (transistor)
Off-state current	80 µAmp
Temperature	-25 to +80°C
Frequency	400 Hz
Built in LED	None
IP Rating	IP68
Body material	Stainless steel
Pressure rated up to	500 bar
Connection type	M12 connector, 3 wire type (brown/+ve, black/output, blue/-ve)

Stock No.	Manf Ref'	Type	Unit Price		
			1-4	5-9	10-24
2667917	BES516300S190S4	N/O	118.67	115.11	111.55