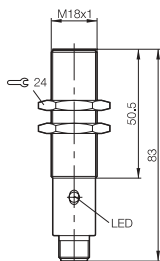


M18, 5mm Sensing 2 Wire DC

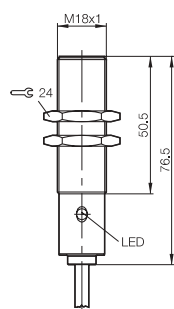
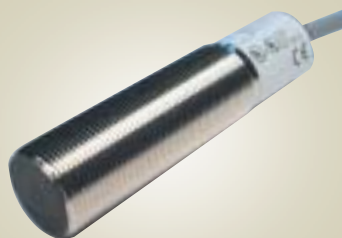


A high quality 2 wire DC inductive proximity sensor in a M18 threaded housing. This sensor operates in series with the load and is for use for virtually any application in the field of automation.

Housing size	M18 (flush)
Nominal sensing range	5mm (steel), reduced for other metals
Supply voltage	10-55 volt DC
Rated output current	200 mA (transistor)
Off-state current	<500 µAmp
Temperature	-25 to +70°C
Frequency	250 Hz
Built in LED's	Yes (function)
IP Rating	IP68
Body material	Nickel plated brass
Connection type	M12 connector, 3 wire type (brown/+ve, blue/ output, black/not used)

Stock No.	Manf Ref'	Type	Unit Price		
			1-4	5-9	10-24
2668094	BES516538S4H	N/O	34.63	33.59	32.55

M18, 5mm Sensing, DC

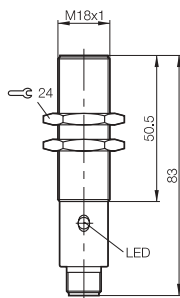


A flush mounted inductive proximity sensor designed to sense ferrous & non-ferrous metals, featuring short circuit & reverse polarity protection. This sensor is ideal for automation & handling applications.

Thread size	M18 (flush)
Nominal sensing range	5mm (steel), reduced for other metals
Supply voltage	10-30 volt DC
Rated output current	200 mA (transistor)
Off-state current	10 µAmp
Temperature	-40 to +85°C
Frequency	900 Hz
Built in LED	Yes
IP Rating	IP68
Body material	Nickel plated brass
Connection type	Pre-wired 3 core (0.34mm=) PVC cable, 3M (brown/+ve, black/output, blue/-ve)
Approvals	UL

Stock No.	Manf Ref'	Type	Unit Price		
			1-4	5-9	10-24
2667965	BES516326BOC3	PNP N/O	34.60	33.56	32.52
2668022	BES516355BOC3	NPN N/O	34.60	33.56	32.52

M18, 5mm Sensing, DC

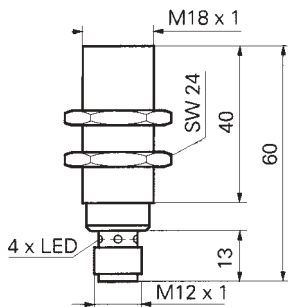


A flush mounted inductive proximity sensor designed to sense ferrous & non-ferrous metals, featuring short circuit & reverse polarity protection. This sensor is ideal for automation & handling applications.

Thread size	M18 (flush)
Nominal sensing range	5mm (steel), reduced for other metals
Supply voltage	10-30 volt DC
Rated output current	200 mA (transistor)
Off-state current	10 µAmp
Temperature	-40 to +85°C
Frequency	900 Hz
Built in LED	Yes
IP Rating	IP68
Body material	Nickel plated brass
Connection type	M12 connector, 3 wire type (brown/+ve, black/output, blue/-ve)
Approvals	UL

Stock No.	Manf Ref'	Type	Unit Price		
			1-4	5-9	10-24
2667980	BES516326S4C	NPN N/O	34.60	33.56	32.52

M18, 5mm Sensing, DC

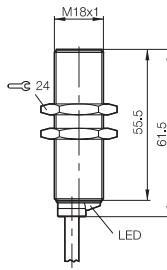
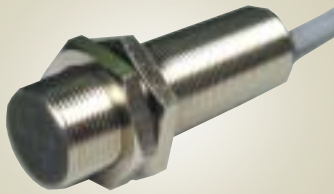


A flush mounted inductive proximity sensor designed to sense ferrous & non-ferrous metals, featuring short circuit & reverse polarity protection. This sensor is ideal for automation & handling applications.

Thread size	M18 (flush)
Nominal sensing range	5mm (steel), reduced for other metals
Supply voltage	10-50 volt DC
Rated output current	200 mA (transistor)
Temperature	-25 to +75°C
Frequency	1000 Hz
Built in LED	4 quadrant LED
IP Rating	IP67
Body material	Nickel plated brass
Connection type	M12 connector, 3 wire type (brown/+ve, black/output, blue/-ve)
Approvals	UL

Stock No.	Manf Ref'	Type	Unit Price		
			1-4	5-9	10-24
1501541	IFRM18P1501/S14L	PNP N/O	45.76	44.39	43.01

M18, 5mm Sensing AC/DC

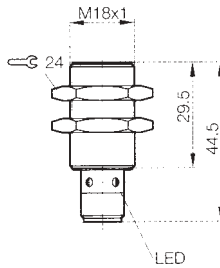


A flush mounted inductive proximity sensor in a 2 wire AC/DC version, designed to sense ferrous & non-ferrous metals. These highest quality sensors are used for virtually any application in the field of automation.

Thread size	M18 (flush)
Nominal sensing range	5mm (steel), reduced for other metals
Supply voltage	20-250 volt AC/DC
Rated output current	250 mA at 25 ° C (transistor)
Off-state current	1.7 mA at 110 volt AC
Temperature	-25 to +70°C
Frequency	400 Hz
Built in LED	Yes
IP Rating	IP67
Body material	Nickel plated brass
Connection type	Pre-wired 2 core (0.34mm≈) PVC cable, 5M (brown/live, blue/output)

Stock No.	Manf Ref ¹	Type	Unit Price		
			1-4	5-9	10-24
2667878	BES516211E4E5	N/O	50.06	48.56	47.06
2667884	BES516212E4E5	N/C	55.09	53.44	51.78

M18, 8mm Sensing, DC



A flush mounted inductive proximity sensor designed to sense ferrous & non-ferrous metals, featuring short circuit & reverse polarity protection. This sensor is ideal for automation & handling applications.

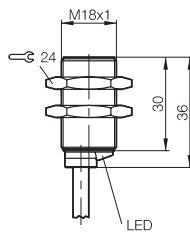
Thread size	M18 (flush)
Nominal sensing range	8mm (steel), reduced for other metals
Supply voltage	10-30 volt DC
Rated output current	130 mA (transistor)
Off-state current	80 µAmp
Temperature	-25 to +70°C
Frequency	200 Hz
Built in LED	Yes
IP Rating	IP67
Body material	Nickel plated brass
Connection type	M12 connector, 3 wire type (brown/+ve, black/output, blue/-ve)

Approvals

UL

Stock No.	Manf Ref ¹	Type	Unit Price		
			1-4	5-9	10-24
2667977	BES516326GE5YS4	PNP N/O	34.60	33.56	32.52

M18, 8mm Sensing, DC



A flush mounted inductive proximity sensor designed to sense ferrous & non-ferrous metals, featuring short circuit & reverse polarity protection. This sensor is ideal for automation & handling applications.

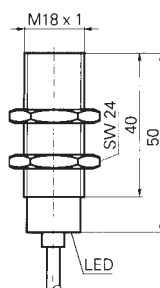
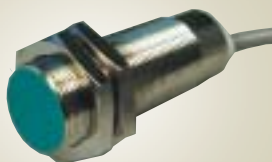
Thread size	M18 (flush)
Nominal sensing range	8mm (steel), reduced for other metals
Supply voltage	10-30 volt DC
Rated output current	130 mA (transistor)
Off-state current	80 µAmp
Temperature	-25 to +70°C
Frequency	200 Hz
Built in LED	Yes
IP Rating	IP68
Body material	Nickel plated brass
Connection type	Pre-wired 3 core (0.34mm≈) PUR cable, 3M (brown/+ve, black/output, blue/-ve)

Approvals

UL

Stock No.	Manf Ref ¹	Type	Unit Price		
			1-4	5-9	10-24
2667974	BES516326GE4YPU3	PNP N/O	34.60	33.56	32.52
2668025	BES516355GE4YPU3	NPN N/O	34.60	33.56	32.52

M18, 8mm Sensing, DC



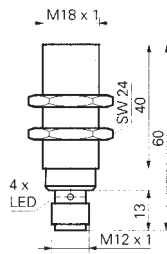
A pre-wired flush mounted inductive proximity sensor designed to sense ferrous & non-ferrous metals, featuring short circuit & reverse polarity protection. This sensor is ideal for automation & handling applications.

Thread size	M18 (flush)
Nominal sensing range	8mm (steel), reduced for other metals
Supply voltage	10-50 volt DC
Rated output current	200 mA (transistor)
Temperature	-25 to +75°C
Frequency	500 Hz
Built in LED	4 quadrant LED red
IP Rating	IP67
Body material	Nickel plated brass
Connection type	Pre-wired 3 core (0.25mm≈) PVC cable, 2M (brown/+ve, black/output, blue/-ve)

Stock No.	Manf Ref ¹	Type	Unit Price		
			1-4	5-9	10-24
1501556	IFRM18P1702/L	PNP N/O	38.79	37.63	36.46

< 20

M18, 8mm Sensing, DC

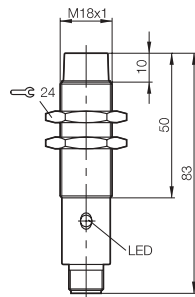
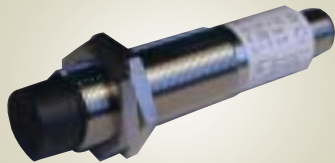


A flush mounted inductive proximity sensor designed to sense ferrous & non-ferrous metals, featuring short circuit & reverse polarity protection. This sensor is ideal for automation & handling applications.

Thread size	M18 (flush)
Nominal sensing range	8mm (steel), reduced for other metals
Supply voltage	10-50 volt DC
Rated output current	200 mA (transistor)
Temperature	-25 to +75°C
Frequency	500 Hz
Built in LED	4 quadrant LED red
IP Rating	IP67
Body material	Nickel plated brass
Connection type	M12 connector, 3 wire type (brown/+ve, black/output, blue/-ve)

Stock No.	Manf Ref'	Type	Unit Price		
			1-4	5-9	10-24
1501550	IFRM18P1701/S14L	PNP N/O	41.21	39.97	38.74
1501502	IFRM18N1701/S14L	NPN N/O	49.19	47.71	46.24

M18, 8mm Sensing, DC



A non-flush mounted inductive proximity sensor designed to sense ferrous & non-ferrous metals, featuring short circuit & reverse polarity protection. This sensor is ideal for automation & handling applications.

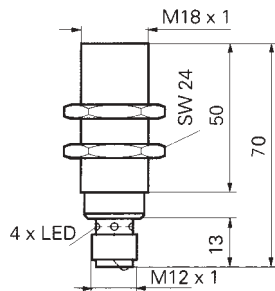
Thread size	M18 (non-flush)
Nominal sensing range	8mm (steel), reduced for other metals
Supply voltage	10-30 volt DC
Rated output current	200 mA (transistor)
Off-state current	10 µAmp
Temperature	-40 to +85°C
Frequency	600 Hz
Built in LED	Yes
IP Rating	IP68
Body material	Nickel plated brass
Connection type	M12 connector, 3 wire type (brown/+ve, black/output, blue/-ve)

Approvals

UL

Stock No.	Manf Ref'	Type	Unit Price		
			1-4	5-9	10-24
2668055	BES516360S4C	PNP N/O	34.60	33.56	32.52
2668058	BES516361S4C	NPN N/O	34.60	33.56	32.52

M18, 8mm Sensing, DC 2 Wire DC

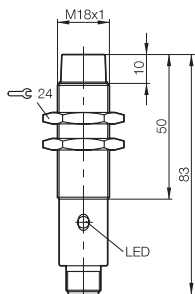
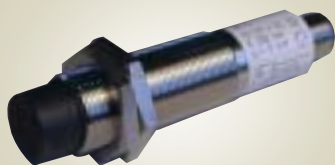


A high quality 2 wire DC inductive proximity sensor in a M18 threaded housing. This sensor offers an extended sensing range of up to 8mm and operates in series with the load. Ideal for virtually any application in the field of automation.

Housing size	M18 (flush)
Nominal sensing range	8mm (steel), reduced for other metals
Supply voltage	10-60 volt DC
Rated output current	5-200 mA (transistor)
Temperature	-25 to +70°C
Frequency	800 Hz
Built in LED's	Yes
IP Rating	IP68
Body material	Nickel plated brass
Connection type	M12 connector, 3 wire type (brown/+ve, black/ output, blue/not used)

Stock No.	Manf Ref'	Type	Unit Price		
			1-4	5-9	10-24
2191592	AXME18/4300KSJ	N/O	61.19	58.74	56.29

M18, 16mm Sensing, DC



A non flush mounted inductive proximity sensor designed to sense ferrous & non-ferrous metals, featuring short circuit & reverse polarity protection. This sensor is ideal for automation & handling applications.

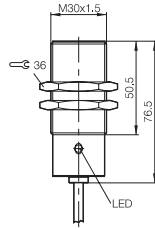
Thread size	M18 (non flush)
Nominal sensing range	16mm (steel), reduced for other metals
Supply voltage	10-55 volt DC
Rated output current	2000 mA (transistor)
Off-state current	80 µAmp
Temperature	-25 to +70°C
Frequency	80 Hz
Built in LED	Yes
IP Rating	IP68
Body material	Nickel plated brass
Connection type	M12 connector, 4 wire type (brown/+ve, black/NO output, white/NC-blue/-ve)

output Approvals

UL

Stock No.	Manf Ref'	Type	Unit Price		
			1-4	5-9	10-24
2668052	BES516360GS4H	PNP N/O	34.60	33.56	32.52
2667866	BES516123GS4H	PNP COMP	34.60	33.56	32.52

M30, 10mm Sensing, DC

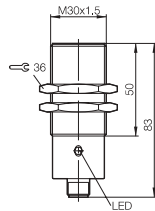
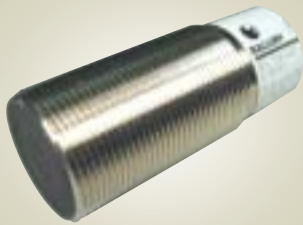


A flush mounted inductive proximity sensor designed to sense ferrous & non-ferrous metals, featuring short circuit & reverse polarity protection. This sensor is ideal for automation & handling applications.

Thread size	M30 (flush)
Nominal sensing range	10mm (steel), reduced for other metals
Supply voltage	10-30 volt DC
Rated output current	200 mA (transistor)
Off-state current	80 µAmp
Temperature	-25 to +70°C
Frequency	300 Hz
Built in LED	Yes
IP Rating	IP68
Body material	Nickel plated brass
Connection type	Pre-wired 3 core (0.34mm≈) PVC cable, 3M (brown/+ve, black/output, blue/-ve)
Approvals	UL

Stock No.	Manf Ref'	Type	Unit Price		
			1-4	5-9	10-24
2667986	BES516327B0C3	PNP N/O	40.00	38.80	37.60
2668043	BES516359B0C3	NPN N/O	40.00	38.80	37.60

M30, 10mm Sensing, DC

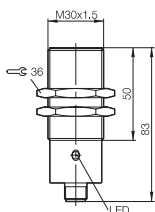
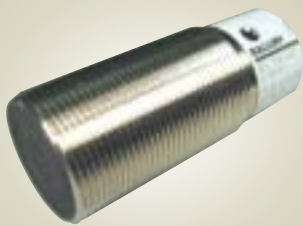


A flush mounted inductive proximity sensor designed to sense ferrous & non-ferrous metals, featuring short circuit & reverse polarity protection. This sensor is ideal for automation & handling applications.

Thread size	M12 (flush)
Nominal sensing range	10mm (steel), reduced for other metals
Supply voltage	10-30 volt DC
Rated output current	200 mA (transistor)
Off-state current	80 µAmp
Temperature	-25 to +70°C
Frequency	300 Hz
Built in LED	Yes
IP Rating	IP68
Body material	Nickel plated brass
Connection type	M12 connector, 3 wire type (brown/+ve, black/output, blue/-ve)
Approvals	UL

Stock No.	Manf Ref'	Type	Unit Price		
			1-4	5-9	10-24
2667992	BES516327S4C	PNP N/O	40.00	38.80	37.60
2668046	BES516359S4C	NPN N/O	40.00	38.80	37.60

M30, 10mm Sensing 2 Wire DC

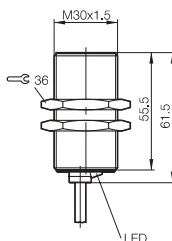


A high quality DC 2 wire inductive proximity sensor in a M30 threaded housing. This sensor operates in series with the load and is for use for virtually any application in the field of automation.

Housing size	M30 (flush)
Nominal sensing range	10mm (steel), reduced for other metals
Supply voltage	10-55 volt DC
Rated output current	200 mA (transistor)
Off-state current	<500 µAmp
Temperature	-25 to +70°C
Frequency	150 Hz
Built in LED's	Yes (function)
IP Rating	IP68
Body material	Nickel plated brass
Connection type	M12 connector, 3 wire type (brown/+ve, blue/ output, black/not used)

Stock No.	Manf Ref'	Type	Unit Price		
			1-4	5-9	10-24
2668097	BES516540S4H	N/O	40.11	38.91	37.70

M30, 10mm Sensing AC/DC



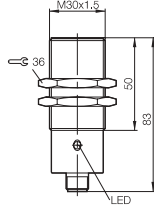
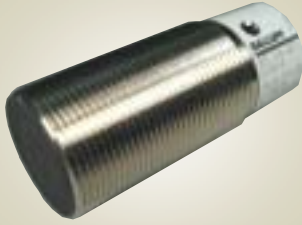
A flush mounted inductive proximity sensor in a 2 wire AC/DC version, designed to sense ferrous & non-ferrous metals. These highest quality sensors are used for virtually any application in the field of automation.

Thread size	M30 (flush)
Nominal sensing range	10mm (steel), reduced for other metals
Supply voltage	20-250 volt AC/DC
Rated output current	250 mA at 25 ° C (transistor)
Off-state current	1.7 mA at 110 volt AC
Temperature	-25 to +70°C
Frequency	150 Hz
Built in LED	Yes
IP Rating	IP67
Body material	Nickel plated brass
Connection type	Pre-wired 2 core (0.34mm≈) PVC cable, 5M (brown/live, blue/output)

Stock No.	Manf Ref'	Type	Unit Price		
			1-4	5-9	10-24
2668687	BES516215E4E5	N/O	55.09	53.44	51.78

< 20

M30, 15mm Sensing, DC

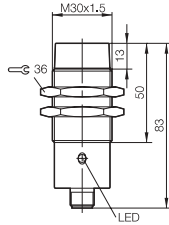


A flush mounted inductive proximity sensor designed to sense ferrous & non-ferrous metals, featuring short circuit & reverse polarity protection. This sensor is ideal for automation & handling applications.

Thread size	M30 (flush)
Nominal sensing range	15mm (steel), reduced for other metals
Supply voltage	10-55 volt DC
Rated output current	200 mA (transistor)
Off-state current	80 µAmp
Temperature	-25 to +70°C
Frequency	150 Hz
Built in LED	Yes
IP Rating	IP68
Body material	Nickel plated brass
Connection type	M12 connector, 3 wire type (brown/+ve, black/output, blue/-ve)
Approvals	UL

Stock No.	Manf Ref'	Type	Unit Price		
			1-4	5-9	10-24
2667989	BES516327GS4H	PNP N/O	40.00	38.80	37.60

M30, 15mm Sensing, DC

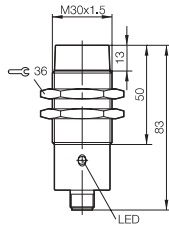
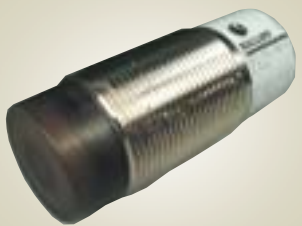


A non flush mounted inductive proximity sensor designed to sense ferrous & non-ferrous metals, featuring short circuit & reverse polarity protection. This sensor is ideal for automation & handling applications.

Thread size	M30 (non flush)
Nominal sensing range	15mm (steel), reduced for other metals
Supply voltage	10-30 volt DC
Rated output current	200 mA (transistor)
Off-state current	80 µAmp
Temperature	-25 to +70°C
Frequency	100 Hz
Built in LED	Yes
IP Rating	IP68
Body material	Nickel plated brass
Connection type	M12 connector, 3 wire type (brown/+ve, black/output, blue/-ve)
Approvals	UL

Stock No.	Manf Ref'	Type	Unit Price		
			1-4	5-9	10-24
2668064	BES516362S4C	PNP N/O	42.81	41.53	40.24
2668067	BES516363S4C	NPN N/O	41.82	40.57	39.31

M30, 30mm Sensing, DC



A non flush mounted inductive proximity sensor designed to sense ferrous & non-ferrous metals, featuring short circuit & reverse polarity protection. This sensor is ideal for automation & handling applications.

Thread size	M30 (non flush)
Nominal sensing range	30mm (steel), reduced for other metals
Supply voltage	10-55 volt DC
Rated output current	200 mA (transistor)
Off-state current	80 µAmp
Temperature	-25 to +70°C
Frequency	70 Hz
Built in LED	Yes
IP Rating	IP68
Body material	Nickel plated brass
Connection type	M12 connector, 3 wire type (brown/+ve, black/output, blue/-ve)
Approvals	UL

Stock No.	Manf Ref'	Type	Unit Price		
			1-4	5-9	10-24
2668061	BES516362GS4H	PNP N/O	47.81	46.38	44.94



Universal Mounting Bracket

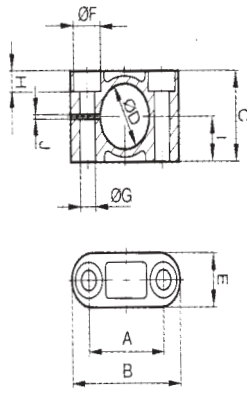


Simple but versatile steel bracket for mounting cylindrical proximity switches. Sensors can be adjusted to all positions and locked securely. Bracket is supplied in kit form complete with assembly instructions.

Brackets are for mounting 4mm plain barrel, M5, M8, M12, M18, M30 sensors using the appropriate bushings.

Stock No.	Manf Ref ¹	Type	Unit Price		
			1-4	5-9	10-24
1501779	051030	BRACKET	4.61	4.47	4.33

Sensor Clamping Cuffs



Simple solution to sensor mounting. Small, easy to install clamping cuffs which hold cylindrical proximity sensors in a fixed position.

Clamping cuffs are for mounting M12, M18, M30 sensors.

M12	C=20, B=32, E=12	all mm
M18	C=26, B=36, E=12	
M30	C=38, B=55, E=18	

Stock No.	Manf Ref ¹	Type	Unit Price		
			1-4	5-9	10-24
2667834	BES12,0-BS-1	M12 CUFF	5.20	5.04	4.89
2667835	BES18,0-BS-1	M18 CUFF	4.41	4.28	4.15
2667837	BES30,0-BS-1	M30 CUFF	6.68	6.48	6.28

<<20

