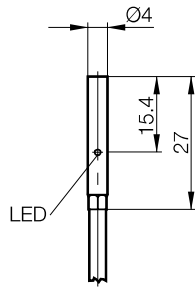
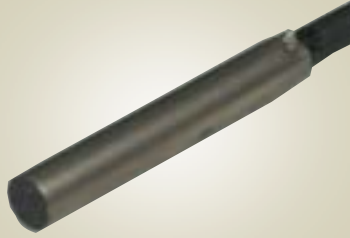


M4, 1.5mm Sensing, DC

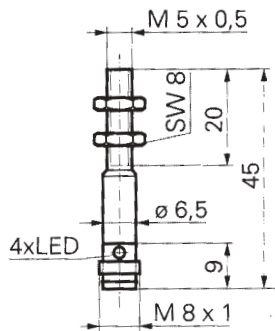


A flush mounted inductive proximity sensor designed to sense ferrous & non-ferrous metals, featuring short circuit & reverse polarity protection. In a housing of only 4mm diameter, this sensor is ideal for automation & handling applications.

Housing size	4mm (flush)
Nominal sensing range	1.5mm (steel), reduced for other metals
Supply voltage	10-30 volt DC
Rated output current	100 mA (transistor)
Off-state current	50 µAmp
Temperature	-25 to +70°C
Frequency	1800 Hz
Built in LED	Yes
IP Rating	IP67
Body material	Stainless Steel
Connection type	Pre-wired 3 core (0.14mm \Rightarrow) PUR cable, 5M (brown/+ve, black/output, blue/-ve)

Stock No.	Manf Ref'	Type	Unit Price		
			1-4	5-9	10-24
2667899	BES5163007GE4CPU5	PNP N/O	42.70	41.42	40.14
2667905	BES5163008GE4CPU5	NPN N/O	42.70	41.42	40.14

M5, 0.8mm Sensing, DC High Speed

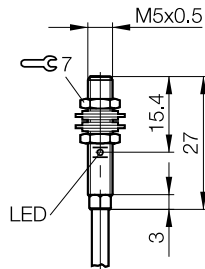


A high speed, flush mounted inductive proximity sensor designed to sense ferrous & non-ferrous metals, featuring short circuit & reverse polarity protection. This sensor is ideal for automation & handling applications.

Housing size	5mm (flush)
Nominal sensing range	0.8mm (steel), reduced for other metals
Supply voltage	10-30 volt DC
Rated output current	100 mA (transistor)
Temperature	-25 to +75°C
Frequency	5000 Hz
Built in LED	4 quadrant LED red
IP Rating	IP67
Body material	Stainless Steel
Connection type	M8 connector, 3 wire type (brown/+ve, black/output, blue/-ve)

Stock No.	Manf Ref'	Type	Unit Price		
			1-4	5-9	10-24
1501272	IFRM05P1501/S35L	PNP N/O	48.48	47.03	45.57
1501273	IFRM05P3501/S35L	PNP N/C	56.97	55.26	53.55

M5, 1.5mm Sensing, DC

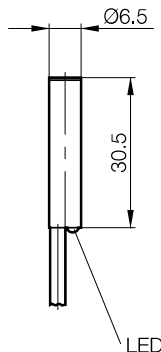
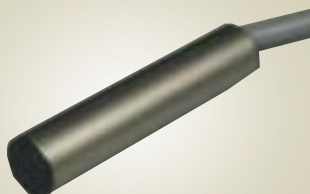


A flush mounted inductive proximity sensor designed to sense ferrous & non-ferrous metals, featuring short circuit & reverse polarity protection. This sensor is ideal for automation & handling applications.

Thread size	M5 (flush)
Nominal sensing range	1.5mm (steel), reduced for other metals
Supply voltage	10-30 volt DC
Rated output current	100 mA (transistor)
Off-state current	50 µAmp
Temperature	-25 to +70°C
Frequency	1800 Hz
Built in LED	Yes
IP Rating	IP67
Body material	Stainless Steel
Connection type	Pre-wired 3 core (0.14mm \Rightarrow) PUR cable, 5M (brown/+ve, black/output, blue/-ve)

Stock No.	Manf Ref'	Type	Unit Price		
			1-4	5-9	10-24
2667887	BES5163005GE4CPU5	PNP N/O	42.70	41.42	40.14
2667890	BES5163006GE4CPU5	NPN N/O	42.70	41.42	40.14

M6.5, 2mm Sensing, DC

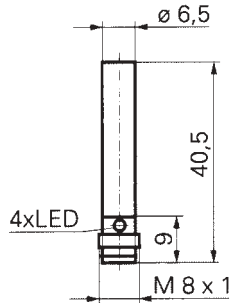


A flush mounted inductive proximity sensor designed to sense ferrous & non-ferrous metals, featuring short circuit & reverse polarity protection. In a housing of 6.5mm dia, this sensor is ideal for automation & handling applications.

Housing size	6.5mm (flush)
Nominal sensing range	2mm (steel), reduced for other metals
Supply voltage	10-30 volt DC
Rated output current	200 mA (transistor)
Off-state current	80 µAmp
Temperature	-25 to +70°C
Frequency	1000 Hz
Built in LED	Yes
IP Rating	IP67
Body material	Stainless Steel
Connection type	Pre-wired 3 core (0.14mm \Rightarrow) PUR cable, 5M (brown/+ve, black/output, blue/-ve)

Stock No.	Manf Ref'	Type	Unit Price		
			1-4	5-9	10-24
2668079	BES516371GE4C3	PNP N/O	37.10	35.99	34.87
2668082	BES516372GE4C3	NPN N/O	37.10	35.99	34.87

M6.5, 2mm Sensing, DC High Speed

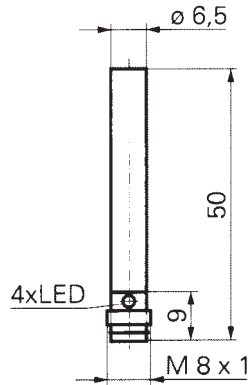


A high speed, flush mounted inductive proximity sensor in a 40.5mm long, Ø 6.5mm smooth bodied housing designed to sense ferrous & non-ferrous metals, featuring short circuit & reverse polarity protection. This sensor is ideal for automation & handling applications.

Housing size	6.5mm (flush)
Nominal sensing range	2mm (steel), reduced for other metals
Supply voltage	10-30 volt DC
Rated output current	200 mA (transistor)
Temperature	-25 to +75°C
Frequency	5000 Hz
Built in LED	4 quadrant LED red
IP Rating	IP67
Body material	Stainless Steel
Connection type	M8 connector, 3 wire type (brown/+ve, black/output, blue/-ve)

Stock No.	Manf Ref ¹	Type	Unit Price		
			1-4	5-9	10-24
1501865	IFRM06P1703/S35L	PNP N/O	51.01	49.48	47.95

M6.5, 2mm Sensing, DC High Speed

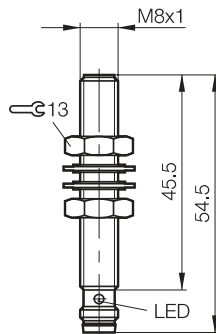


A high speed, flush mounted inductive proximity sensor in a 50mm long, Ø 6.5mm smooth bodied housing designed to sense ferrous & non-ferrous metals, featuring short circuit & reverse polarity protection. This sensor is ideal for automation & handling applications.

Housing size	6.5mm (flush)
Nominal sensing range	2mm (steel), reduced for other metals
Supply voltage	10-30 volt DC
Rated output current	200 mA (transistor)
Temperature	-25 to +75°C
Frequency	5000 Hz
Built in LED	4 quadrant LED red
IP Rating	IP67
Body material	Stainless Steel
Connection type	M8 connector, 3 wire type (brown/+ve, black/output, blue/-ve)

Stock No.	Manf Ref ¹	Type	Unit Price		
			1-4	5-9	10-24
1501295	IFRM06P1701/S35L	PNP N/O	42.83	41.55	40.26

M8, 1.5mm Sensing, DC High Speed

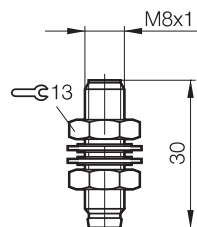


A flush mounted inductive proximity sensor designed to sense ferrous & non-ferrous metals, featuring short circuit & reverse polarity protection. This sensor is ideal for automation & handling applications.

Thread size	M8 (flush)
Nominal sensing range	1.5mm (steel), reduced for other metals
Supply voltage	10-30 volt DC
Rated output current	200 mA (transistor)
Off-state current	10 µAmp
Temperature	-40 to +85°C
Frequency	3000 Hz
Built in LED	Yes
IP Rating	IP67
Body material	Stainless Steel
Connection type	M8 connector, 3 wire type (brown/+ve, black/output, blue/-ve)
Approvals	UL

Stock No.	Manf Ref ¹	Type	Unit Price		
			1-4	5-9	10-24
2667941	BES516324S49C	PNP N/O	29.61	28.72	27.83

M8, 1.5mm Sensing, DC



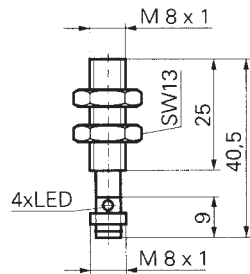
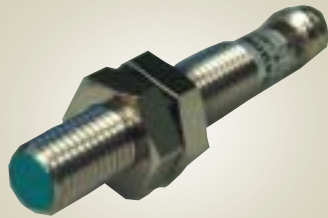
A flush mounted inductive proximity sensor designed to sense ferrous & non-ferrous metals, featuring short circuit & reverse polarity protection. This sensor is ideal for automation & handling applications.

Thread size	M8 (flush)
Nominal sensing range	1.5mm (steel), reduced for other metals
Supply voltage	10-30 volt DC
Rated output current	200 mA (transistor)
Off-state current	80 µAmp
Temperature	-25 to +70°C
Frequency	1500 Hz
Built in LED	Yes
IP Rating	IP65
Body material	Stainless Steel
Connection type	M8 connector, 3 wire type (brown/+ve, black/output, blue/-ve)
Approvals	UL

Stock No.	Manf Ref ¹	Type	Unit Price		
			1-4	5-9	10-24
2667926	BES516324E5DS49	PNP N/O	32.70	31.72	30.74

< 20

M8, 2mm Sensing, DC High Speed

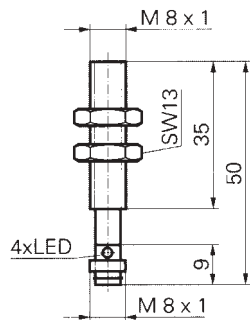
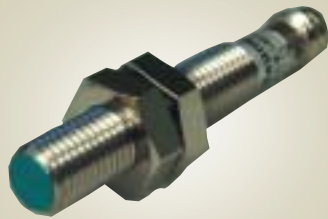


A high speed, flush mounted inductive proximity sensor in a 40.5mm long housing, threaded to 25mm, designed to sense ferrous & non-ferrous metals, featuring short circuit & reverse polarity protection. This sensor is ideal for automation & handling applications.

Housing size	8mm (flush)
Nominal sensing range	2mm (steel), reduced for other metals
Supply voltage	10-30 volt DC
Rated output current	200 mA (transistor)
Temperature	-25 to +75°C
Frequency	5000 Hz
Built in LED	4 quadrant LED red
IP Rating	IP67
Body material	Stainless Steel
Connection type	M8 connector, 3 wire type (brown/+ve, black/output, blue/-ve)

Stock No.	Manf Ref'	Type	Unit Price		
			1-4	5-9	10-24
1501355	IFRM08P1703/S35L	PNP N/O	45.15	43.80	42.44

M8, 2mm Sensing, DC High Speed

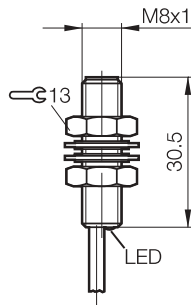


A high speed, flush mounted inductive proximity sensor in a 50mm long housing, threaded to 35mm, designed to sense ferrous & non-ferrous metals, featuring short circuit & reverse polarity protection. This sensor is ideal for automation & handling applications.

Housing size	8mm (flush)
Nominal sensing range	2mm (steel), reduced for other metals
Supply voltage	10-30 volt DC
Rated output current	200 mA (transistor)
Temperature	-25 to +75°C
Frequency	5000 Hz
Built in LED	4 quadrant LED red
IP Rating	IP67
Body material	Stainless Steel
Connection type	M8 connector, 3 wire type (brown/+ve, black/output, blue/-ve)

Stock No.	Manf Ref'	Type	Unit Price		
			1-4	5-9	10-24
1501352	IFRM08P1701/S35L	PNP N/O	42.83	41.55	40.26

M8, 2mm Sensing, DC



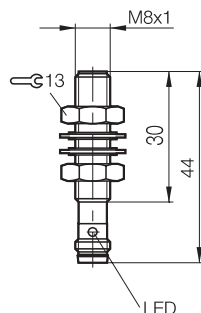
A flush mounted inductive proximity sensor designed to sense ferrous & non-ferrous metals, featuring short circuit & reverse polarity protection. This sensor is ideal for automation & handling applications.

Thread size	M8 (flush)
Nominal sensing range	2mm (steel), reduced for other metals
Supply voltage	10-30 volt DC
Rated output current	200 mA (transistor)
Off-state current	80 µAmp
Temperature	-25 to +70°C
Frequency	1000 Hz
Built in LED	Yes
IP Rating	IP67
Body material	Stainless Steel
Connection type	Pre-wired 3 core (0.14mm \approx) PVC cable, 3M (brown/+ve, black/output, blue/-ve)

Approvals	UL
-----------	----

Stock No.	Manf Ref'	Type	Unit Price		
			1-4	5-9	10-24
2667932	BES516324GE4C3	PNP N/O	32.70	31.72	30.74
2668005	BES516343GE4C3	NPN N/O	32.70	31.72	30.74

M8, 2mm Sensing, DC



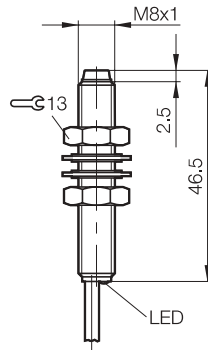
A flush mounted inductive proximity sensor designed to sense ferrous & non-ferrous metals, featuring short circuit & reverse polarity protection. This sensor is ideal for automation & handling applications.

Thread size	M8 (flush)
Nominal sensing range	2mm (steel), reduced for other metals
Supply voltage	10-30 volt DC
Rated output current	200 mA (transistor)
Off-state current	80 µAmp
Temperature	-25 to +70°C
Frequency	1000 Hz
Built in LED	Yes
IP Rating	IP67
Body material	Stainless Steel
Connection type	M8 connector, 3 wire type (brown/+ve, black/output, blue/-ve)

Approvals	UL
-----------	----

Stock No.	Manf Ref'	Type	Unit Price		
			1-4	5-9	10-24
2667938	BES516324GE5CS49	PNP N/O	32.70	31.72	30.74

M8, 2.5mm Sensing, DC

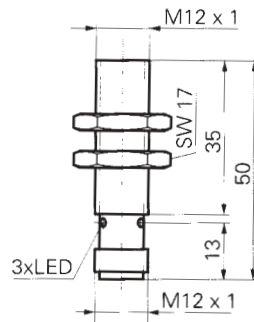


A non flush mounted inductive proximity sensor designed to sense ferrous & non-ferrous metals, featuring short circuit & reverse polarity protection. This sensor is ideal for automation & handling applications.

Thread size	M8 (flush)
Nominal sensing range	2.5mm (steel), reduced for other metals
Supply voltage	10-30 volt DC
Rated output current	200 mA (transistor)
Off-state current	10 µAmp
Temperature	-40 to +85°C
Frequency	1500 Hz
Built in LED	Yes
IP Rating	IP67
Body material	Stainless Steel
Connection type	Pre-wired 3 core (0.14mm≈) PVC cable, 3M (brown/+ve, black/output, blue/-ve)
Approvals	UL

Stock No.	Manf Ref ¹	Type	Unit Price		
			1-4	5-9	10-24
2668091	BES516384EOC3	NPN N/O	32.70	31.72	30.74

M12, 2mm Sensing, DC

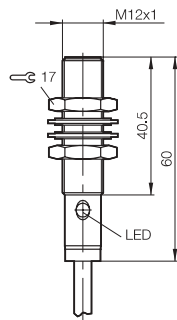


A flush mounted inductive proximity sensor designed to sense ferrous & non-ferrous metals, featuring short circuit & reverse polarity protection. This sensor is ideal for automation & handling applications.

Housing size	12mm (flush)
Nominal sensing range	2mm (steel), reduced for other metals
Supply voltage	10-30 volt DC
Rated output current	200 mA (transistor)
Temperature	-25 to +75°C
Frequency	2000 Hz
Built in LED	Yes, 3 port
IP Rating	IP67
Body material	Nickel plated brass
Connection type	M12 connector, 3 wire type (brown/+ve, black/output, blue/-ve)

Stock No.	Manf Ref ¹	Type	Unit Price		
			1-4	5-9	10-24
1501433	IFRM12P1501/S14L	PNP N/O	37.17	36.05	34.94

M12, 2mm Sensing, DC

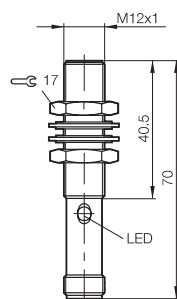


A flush mounted inductive proximity sensor designed to sense ferrous & non-ferrous metals, featuring short circuit & reverse polarity protection. This sensor is ideal for automation & handling applications.

Thread size	M12 (flush)
Nominal sensing range	2mm (steel), reduced for other metals
Supply voltage	10-30 volt DC
Rated output current	200 mA (transistor)
Off-state current	10 µAmp
Temperature	-40 to +85°C
Frequency	3000 Hz
Built in LED	Yes
IP Rating	IP68
Body material	Stainless Steel
Connection type	Pre-wired 3 core (0.34mm≈) PVC cable, 3mtr (brown/+ve, black/output, blue/-ve)
Approvals	UL

Stock No.	Manf Ref ¹	Type	Unit Price		
			1-4	5-9	10-24
2667947	BES516325BOC3	PNP N/O	31.70	30.75	29.80

M12, 2mm Sensing, DC



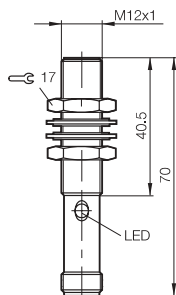
A flush mounted inductive proximity sensor designed to sense ferrous & non-ferrous metals, featuring short circuit & reverse polarity protection. This sensor is ideal for automation & handling applications.

Thread size	M12 (flush)
Nominal sensing range	2mm (steel), reduced for other metals
Supply voltage	10-30 volt DC
Rated output current	200 mA (transistor)
Off-state current	10 µAmp
Temperature	-40 to +85°C
Frequency	3000 Hz
Built in LED	Yes
IP Rating	IP68
Body material	Stainless Steel
Connection type	M12 Connector, 3 wire type (brown/+ve, black/output, blue/-ve)
Approvals	UL

Stock No.	Manf Ref ¹	Type	Unit Price		
			1-4	5-9	10-24
2667962	BES516325S4C	PNP N/O	31.70	30.75	29.80

< 20

M12, 2mm Sensing 2 Wire DC

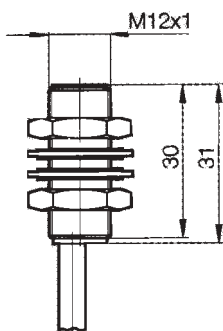


A high quality DC 2 wire inductive proximity sensor in a M12 threaded housing. This sensor operates in series with the load and is for use for virtually any application in the field of automation.

Housing size	M12 (flush)
Nominal sensing range	2mm (steel), reduced for other metals
Supply voltage	10-55 volt DC
Rated output current	200 mA (transistor)
Off-state current	<500 µAmp
Temperature	-25 to +70°C
Frequency	2500 Hz
Built in LED's	Yes (function)
IP Rating	IP68
Body material	Stainless steel
Connection type	M12 connector, 3 wire type (brown/+ve, blue/ output, black/not used)

Stock No.	Manf Ref'	Type	Unit Price		
			1-4	5-9	10-24
2668100	BES516542S4H	N/O	31.70	30.75	29.80

M12, 2mm Sensing AC/DC

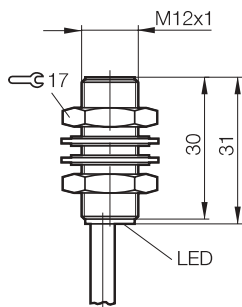


A flush mounted inductive proximity sensor in a 2 wire AC/DC version, designed to sense ferrous & non-ferrous metals. These highest quality sensors are used for virtually any application in the field of automation.

Thread size	M12 (flush)
Nominal sensing range	2mm (steel), reduced for other metals
Supply voltage	20-250 volt AC/DC
Rated output current	130 mA at 25 ° C (transistor)
Off-state current	1.7 mA at 110 volt AC
Temperature	-25 to +70°C
Frequency	1000 Hz
Built in LED	Yes
IP Rating	IP67
Body material	Stainless steel
Connection type	Pre-wired 2 core (0.34mm=) PVC cable, 3M (brown/live, blue/output)

Stock No.	Manf Ref'	Type	Unit Price		
			1-4	5-9	10-24
2667875	BES516207B0E3	N/O	50.06	48.56	47.06

M12, 4mm Sensing, DC

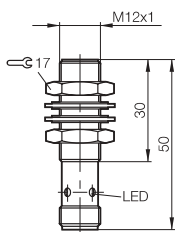
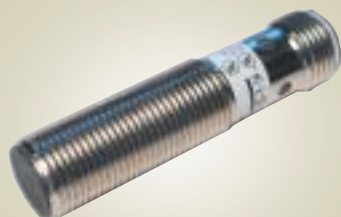


A flush mounted inductive proximity sensor designed to sense ferrous & non-ferrous metals, featuring short circuit & reverse polarity protection. This sensor is ideal for automation & handling applications.

Thread size	M12 (flush)
Nominal sensing range	4mm (steel), reduced for other metals
Supply voltage	10-30 volt DC
Rated output current	130 mA (transistor)
Off-state current	80 µAmp
Temperature	-25 to +70°C
Frequency	600 Hz
Built in LED	Yes
IP Rating	IP68
Body material	Nickel plated brass
Connection type	Pre-wired 3 core (0.34mm=) PVC cable, 3mtr (brown/+ve, black/output, blue/-ve)
Approvals	UL

Stock No.	Manf Ref'	Type	Unit Price		
			1-4	5-9	10-24
2667956	BES516325GE4Y3	PNP N/O	31.70	30.75	29.80

M12, 4mm Sensing, DC

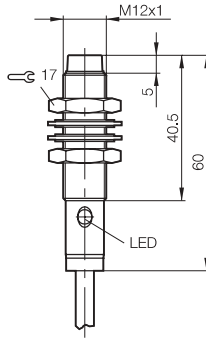


A flush mounted inductive proximity sensor designed to sense ferrous & non-ferrous metals, featuring short circuit & reverse polarity protection. This sensor is ideal for automation & handling applications.

Thread size	M12 (flush)
Nominal sensing range	4mm (steel), reduced for other metals
Supply voltage	10-30 volt DC
Rated output current	130 mA (transistor)
Off-state current	80 µAmp
Temperature	-25 to +70°C
Frequency	600 Hz
Built in LED	Yes
IP Rating	IP67
Body material	Nickel plated brass
Connection type	M12 connector, 3 wire type (brown/+ve, black/output, blue/-ve)
Approvals	UL

Stock No.	Manf Ref'	Type	Unit Price		
			1-4	5-9	10-24
2667959	BES516325GE5YS4	PNP N/O	31.70	30.75	29.80
2667994	BES516329GE5YS4	NPN N/O	31.70	30.75	29.80

M12, 4mm Sensing, DC

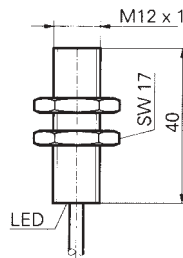


A non flush mounted inductive proximity sensor designed to sense ferrous & non-ferrous metals, featuring short circuit & reverse polarity protection. This sensor is ideal for automation & handling applications.

Thread size	M12 (non flush)
Nominal sensing range	4mm (steel), reduced for other metals
Supply voltage	10-30 volt DC
Rated output current	200 mA (transistor)
Off-state current	10 µAmp
Temperature	-40 to +85°C
Frequency	1500 Hz
Built in LED	Yes
IP Rating	IP68
Body material	Stainless steel
Connection type	Pre-wired 3 core (0.34mm ²) PVC cable, 3M (brown/+ve, black/output, blue/-ve)
Approvals	UL

Stock No.	Manf Ref ¹	Type	Unit Price		
			1-4	5-9	10-24
2668028	BES516356BOC3	PNP N/O	31.70	30.75	29.80
2668040	BES516357BOC3	NPN N/O	31.70	30.75	29.80

M12, 4mm Sensing, DC

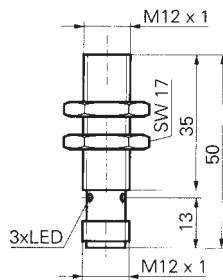
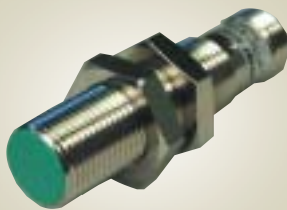


A flush mounted inductive proximity sensor designed to sense ferrous & non-ferrous metals, featuring short circuit & reverse polarity protection. This sensor is ideal for automation & handling applications.

Housing size	12mm (flush)
Nominal sensing range	4mm (steel), reduced for other metals
Supply voltage	12-30 volt DC
Rated output current	200 mA (transistor)
Temperature	-25 to +75°C
Frequency	2000 Hz
Built in LED	3 port LED red
IP Rating	IP67
Body material	Nickel plated brass
Connection type	Pre-wired 3 core (0.25mm ²) PVC cable, 2mtr (brown/+ve, black/output, blue/-ve)

Stock No.	Manf Ref ¹	Type	Unit Price		
			1-4	5-9	10-24
1501454	IFRM12P1702/L	PNP N/O	33.94	32.92	31.90

M12, 4mm Sensing, DC



A flush mounted inductive proximity sensor designed to sense ferrous & non-ferrous metals, featuring short circuit & reverse polarity protection. This sensor is ideal for automation & handling applications.

Housing size	12mm (flush)
Nominal sensing range	4mm (steel), reduced for other metals
Supply voltage	12-30 volt DC
Rated output current	200 mA (transistor)
Temperature	-25 to +75°C
Frequency	2000 Hz
Built in LED	3 port LED red
IP Rating	IP67
Body material	Nickel plated brass
Connection type	M12 connector, 3 wire type (brown/+ve, black/output, blue/-ve)

Stock No.	Manf Ref ¹	Type	Unit Price		
			1-4	5-9	10-24
1501448	IFRM12P1701/S14L	PNP N/O	34.75	33.71	32.67

<<20