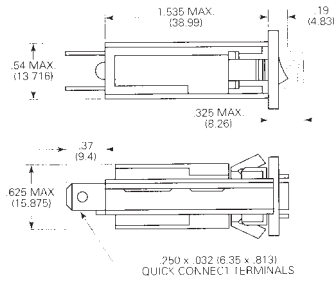


**Thermal Fuseholder Type
Circuit Breaker, W28 Series**

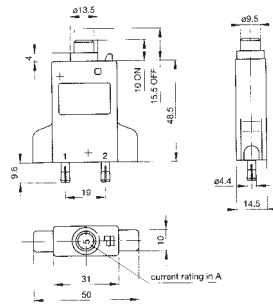


Single pole thermal circuit breaker in a fuseholder type socket. Featuring push-to-reset, button extends for visual trip indication, snap-in mounting.

Rated voltage 32VDC max.
Rupture current 2A (6xIn), 3-15A (10xIn)
Typical life 30,000 ops at In
Terminals 6.3mm push-on, soldering not recommended
Approvals UL, CSA, VDE
Tripping times (In)
135% 1 hour max. guaranteed at +25°C
200% Between 4.5 - 15 secs
400% Between 1 - 6.2 secs

Stock No.	Manf Ref ¹	Rating	Unit Price		
			1-9	10-24	25-49
4952553	W28XQ1A-2	2AMP	4.63	4.17	3.94
4952556	W28XQ1A-3	3AMP	2.30	2.07	1.96
4952562	W28XQ1A-5	5AMP	2.30	2.07	1.96
4952565	W28XQ1A-7	7AMP	2.30	2.07	1.96
4952547	W28XQ1A-10	10AMP	2.30	2.07	1.96
4952550	W28XQ1A-15	15AMP	2.30	2.07	1.96

**Thermal Overcurrent Circuit
Breaker, 2-5200H Series**

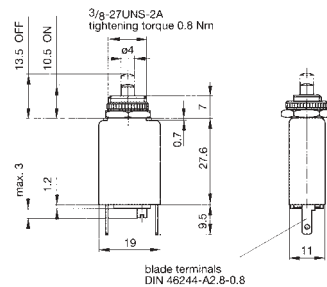


2-2500H series single pole thermal circuit breaker with press-to-reset, manual release, tease free, trip free, snap action mechanism. Designed for plug-in mounting into a socket which will accommodate two breakers.

Rated voltage 28VDC
Rupture current 3-5A (20xIn), 8-25A (400A)
Temperature -20°C to +60°C
Approvals SEMKO
Tripping times (In)
140% 1 hour max. guaranteed at 23°C
200% Between 10.5 - 35 secs
400% Between 3 - 8 secs

Stock No.	Manf Ref ¹	Rating	Unit Price		
			1-9	10-24	25-49
4100334	2-5200H-3A	3AMP	11.81	10.92	10.63
4100337	2-5200H-5A	5AMP	11.81	10.92	10.63
4100340	2-5200H-8A	8AMP	11.81	10.92	10.63
4100322	2-5200H-10A	10AMP	11.81	10.92	10.63
4100325	2-5200H-13A	13AMP	11.81	10.92	10.63
4100328	2-5200H-15A	15AMP	11.81	10.92	10.63
4100331	2-5200H-25A	25AMP	11.81	10.92	10.63
4100121	10R-P10	SOCKET	2.87	2.65	2.58

**Thermal Overcurrent
Circuit Breaker, 106 Series**

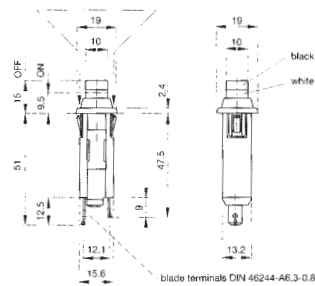


Miniaturised single pole thermal circuit breaker with push-to-reset, tease free, trip free, snap action mechanism. Single hole mounting with double insulated pushbutton assembly. UL, CSA, VDE approved.

Rated voltage 48VDC, 240VAC
Rupture current, 48VDC 0.5-10A (200A), 48VDC
Rupture current, 250VAC 0.5-4A (200A), 5A (1000A), 8A (2000A)
Temperature -20°C to +60°C
Terminals 2.8mm push-on
Tripping times (In)
140% 1 hour max. guaranteed at 23°C
200% Between 10.4 - 40 secs
400% Between 3 - 8 secs

Stock No.	Manf Ref ¹	Rating	Unit Price		
			1-9	10-24	25-49
4100100	106P30-0.5A	0.5AMP	6.42	5.94	5.78
4100103	106P30-1A	1AMP	6.42	5.94	5.78
4100106	106P30-2A	2AMP	6.42	5.94	5.78
4100109	106P30-3A	3AMP	6.42	5.94	5.78
4100112	106P30-4A	4AMP	6.42	5.94	5.78
4100115	106P30-5A	5AMP	6.42	5.94	5.78
4100118	106P30-8A	8AMP	6.42	5.94	5.78

**Thermal Overcurrent
Circuit Breaker, 1110 Series**

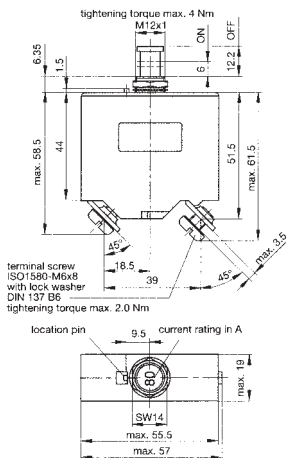


Single pole switch/thermal circuit breaker with tease free, trip free, snap action mechanism. Unique push/push operation with an ergonomic styled actuator. Indicator shows tripped/off position. Industry standard fuse-holder cut-out dimensions in panel thickness of 0.8 - 1.6mm.

Rated voltage 28VDC, 240VAC
Rupture current 0.5-10A (1000A), 0.5-10A (1000A) at 50VDC
Temperature -20°C to +60°C
Terminals 6.3mm push-on
Tripping times (In)
140% 1 hour max. guaranteed at 23°C
200% Between 10.5 - 50 sec
400% Between 3.5 - 8 sec

Stock No.	Manf Ref ¹	Rating	Unit Price		
			1-9	10-24	25-49
4100124	1110-F112-P1M1-0.5A	0.5AMP	7.92	7.33	7.13
4100130	1110-F112-P1M1-1A	1AMP	7.92	7.33	7.13
4100133	1110-F112-P1M1-2A	2AMP	7.92	7.33	7.13
4100136	1110-F112-P1M1-3A	3AMP	7.92	7.33	7.13
4100139	1110-F112-P1M1-5A	5AMP	7.92	7.33	7.13
4100142	1110-F112-P1M1-8A	8AMP	7.26	6.72	6.53
4100127	1110-F112-P1M1-10A	10AMP	7.26	6.72	6.53

High Performance Push/Pull On/Off, 452 Series



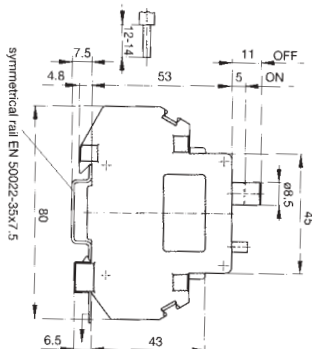
High performance single pole thermal magnetic circuit breaker with tease-free, trip-free, snap action mechanism and push/pull on/off manual actuation. Single hole panel mounted. Indicator band to show tripped/off position. Suitable for extra low voltage wiring systems on all types of vehicle for land, sea and air; defence equipment; battery powered machines. UL approved.

Rated voltage 28VDC, 115VAC (400Hz)
Rupture current 115VAC 400Hz (1500A), 28VDC (6000A)
Typical life 2500 cycles at rated load
Temperature -55°C to +75°C
Terminals Screw M6, fitted
Approvals UL

Tripping times (In)
140% 1 hour max. guaranteed at 23°C
200% Between 15 - 150 sec
400% Between 3 - 15 sec

Stock No.	Manf Ref'	Type	Unit Price		
			1-9	10-24	25-49
4100667	452-K14-FN2-50A	50AMP	65.95	61.00	59.36
4100670	452-K14-FN2-60A	60AMP	65.95	61.00	59.36
4100673	452-K14-FN2-70A	70AMP	65.95	61.00	59.36

Two Button Operation Slimline, 201 Series



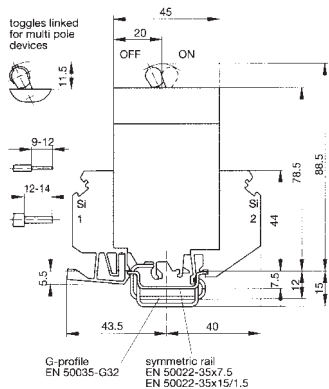
Slimline single pole thermal magnetic circuit breaker with tease-free, trip-free, snap action mechanism and two button operation (black-reset/red-trip). Din rail mounted. Suitable for process control, instrumentation.

Rated voltage 65VDC, 240VAC (50/60 Hz)
Rupture current 1000A
Typical life 5000 cycles at 200% of rated load
Temperature -30°C to +60°C
Approvals UL, CSA, VDE

Tripping times (In)
140% 1 hour max. guaranteed at 23°C
200% 15 - 60 sec
400% 2 - 8 sec

Stock No.	Manf Ref'	Type	Unit Price		
			1-9	10-24	25-49
4100253	201-0.5A	0.5AMP	18.40	17.02	16.56
4100262	201-1A	1AMP	18.40	17.02	16.56
4100265	201-2A	2AMP	18.40	17.02	16.56
4100268	201-3A	3AMP	18.40	17.02	16.56
4100271	201-5A	5AMP	18.40	17.02	16.56
4100256	201-10A	10AMP	18.40	17.02	16.56
4100259	201-15A	15AMP	18.40	17.02	16.56

Toggle Actuation Slimline, 2210 Series



Slimline one & two pole thermal magnetic circuit breakers with trip-free, snap action mechanism and toggle actuation. Din rail & 'G' rail mounted. 1 N/O auxiliary contact. The two pole version is internally linked to ensure that both poles trip in the event of overload on either pole, even if actuator is held in the 'ON' position. All screw terminals are recessed for safety. Suitable for process control, robotics, telecom, instrumentation.

Rated voltage 65VDC, 277VAC (50/60Hz)
Rupture current 1 & 2 pole (5000A) 277VAC
3 pole (5000A) 3 x 480VAC

Auxiliary contact rating 1A at 240VAC/65VDC, 1 N/O
Typical life 10,000 cycles at rated load
Temperature -30°C to +60°C
Terminals Recessed screw clamp
Approvals UL, CSA, VDE

Tripping times (In)
140% 1 hour max. guaranteed at 23°C
200% Between 10 - 60 sec (0.5A - 5A)
400% Between 10 - 40 sec (10A - 16A)
Between 3 - 10 sec (0.5A - 5A)
Between 1.5 - 5.5 sec (10A-16A)

Also available:
• Circuit breakers with a wide choice of characteristic curves.
• Circuit breakers with an intermediate position toggle actuator.

Stock No.	Manf Ref'	Type	Unit Price		
			1-9	10-24	25-49
4100274	2210-T210-K0M1-H121-0.5A	1POLE	18.50	17.11	16.65
4100283	2210-T210-K0M1-H121-1A	1POLE	18.50	17.11	16.65
4100286	2210-T210-K0M1-H121-2A	1POLE	16.27	15.05	14.64
4100289	2210-T210-K0M1-H121-3A	1POLE	16.27	15.05	14.64
4100292	2210-T210-K0M1-H121-5A	1POLE	16.27	15.05	14.64
4100277	2210-T210-K0M1-H121-10A	1POLE	17.71	16.38	15.94
4100280	2210-T210-K0M1-H121-16A	1POLE	17.71	16.38	15.94
4100295	2210-T220-K0M1-H121-0.5A	2POLE	39.99	36.99	35.99
4100304	2210-T220-K0M1-H121-1A	2POLE	39.99	36.99	35.99
4100307	2210-T220-K0M1-H121-2A	2POLE	35.31	32.66	31.78
4100310	2210-T220-K0M1-H121-3A	2POLE	35.31	32.66	31.78
4100313	2210-T220-K0M1-H121-5A	2POLE	35.31	32.66	31.78
4100298	2210-T220-K0M1-H121-10A	2POLE	38.23	35.36	34.41
4100301	2210-T220-K0M1-H121-16A	2POLE	38.23	35.36	34.41