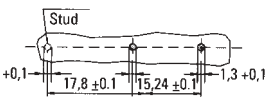
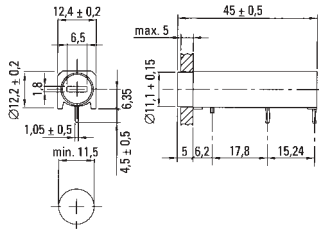


PCB Mounted Fuse Holder



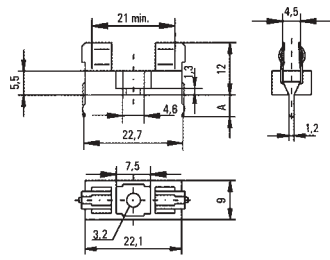
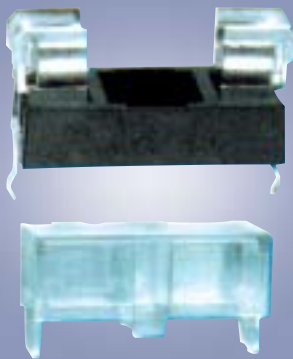
Recommended Hole Pattern

Fuse holder and fuse caps for PCB mounting, with screwdriver slot fuse extraction. Fuse caps for holding either 5x20mm fuses or 6.3x32mm fuses. Please order holder and cap separately.

Fuse size 5 x 20mm  
 Current rating 16Amp at 250V  
 Dielectric strength 4000V min. 50 Hz  
 Temperature -40°C to +85°C  
 Material Black duroplast (UL94V0)  
 Terminals Brass, tin plated  
 Approvals UL, CSA, VDE (all pending)

Stock No.	Manf Ref'	Type	Unit Price		
			1-9	10-24	25-49
8591028	862	HOLDER	0.64	0.61	0.58
8591031	865	FUSE CAP 5x20MM	0.40	0.38	0.36
8591013	866	FUSE CAP 6.3x32MM	0.42	0.40	0.38

PCB Mounted Fuse Holder & Cover



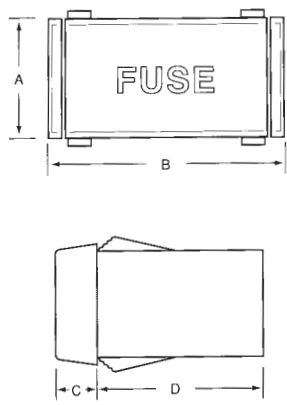
Recommended Hole Pattern

Low profile fuse holder for PCB mounting with optional cover.

Fuse size 5 x 20mm  
 Max. Current/power 6.3Amp/2.5W  
 Material Black thermoplastic (UL94V0)  
 Terminals Copper alloy, tin plated  
 Mounting Solder pins 0.5 x 1.2mm  
 Ø3mm screw hole may be used optionally

Stock No.	Manf Ref'	Type	Unit Price		
			1-9	10-24	25-49
8591037	646	HOLDER	0.14	0.13	0.13
8591040	648	COVER	0.07	0.07	0.06

Panel Mounted Fuse Holder, Flip-Top



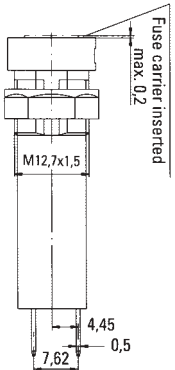
A = 17.8, B = 26.2, C = 6.6, D = 23.8

Flip-top fuse holder for snap-in panel mounting, that unlocks with the press of a finger. Holds spare fuse for fast easy replacement.

Fuse size 5 x 20mm  
 Current rating 10Amp at 250V  
 Terminals 4.8mm x 0.8mm push-on or solder  
 Temperature -40°C to +85°C  
 Material Black thermoplastic (UL94V2)  
 Depth behind panel 23.8mm  
 Panel cut-out 15.8mm x 24.2mm  
 Panel thickness 0.8mm x 3.1mm  
 Approvals UL, CSA

Stock No.	Manf Ref'	Type	Unit Price		
			1-9	10-24	25-49
9381048	02860677	FLIP-TOP	1.64	1.53	1.41

Panel Mounted Fuse Holder



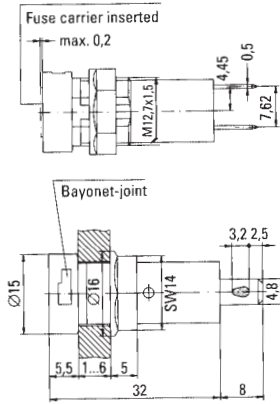
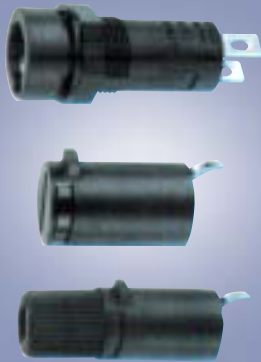
Universal fuseholder and fuse caps for panel mounting. Screwdriver slot fuse cap extraction. Fuse caps for holding either 5x20mm fuses or 6.3x32mm fuses. Please order holder and cap separately.

Fuse size 5x20mm, 6.3x32mm  
 Current rating 16Amp at 250V  
 Insulation resistance 1,000 megohm at 500VDC  
 Temperature -25°C to +70°C  
 Material Black thermoplastic (UL94V0)  
 Terminals 4.8mm push-on/solder  
 IP Rating IP40  
 Mounting hole Ø12.7mm D-hole  
 Approvals UL, CSA, VDE

Stock No.	Manf Ref'	Type	Unit Price		
			1-9	10-24	25-49
8591001	800	HOLDER	0.54	0.51	0.49
8591004	815	FUSE CAP 5x20MM	0.43	0.41	0.39
8591007	816	FUSE CAP 6.3x32MM	0.46	0.44	0.41

< 18

**Panel Mounted Fuseholder Short Body**

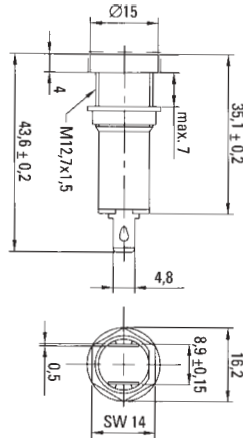


Short body fuseholder and fuse caps for panel mounting. Fuse caps for holding 5x20mm fuses have either flush mounted screwdriver slot fuse or finger grip cap extraction. Please order holder and cap separately.

Fuse size 5x20mm  
 Current rating 16Amp at 250V  
 Insulation resistance 1,000 megohm at 500VDC  
 Temperature -25°C to +70°C  
 Material Black thermoplastic (UL94V0)  
 Terminal material Copper alloy, tinned  
 Terminals 4.8mm push-on/solder  
 IP Rating IP40  
 Mounting hole Ø12.7mm D-hole  
 Approvals UL, CSA, VDE pending

Stock No.	Manf Ref'	Type	Unit Price		
			1-9	10-24	25-49
8591016	820	HOLDER	0.44	0.42	0.40
8591019	835	FUSE CAP S/DRIVER	0.39	0.37	0.35
8591022	837	FUSE CAP FINGER	0.44	0.42	0.40

**Panel Mounted Fuseholder Medical Grade**

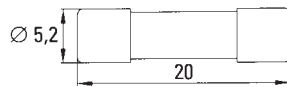


Medical grade fuseholder and captive fuse cap for panel mounting. Fuse caps for holding 5x20mm fuses. Screwdriver slot fuse cap extraction.

Fuse size 5x20mm  
 Current rating 10Amp at 250V  
 Insulation resistance 1,000 megohm at 500VDC  
 Temperature -40°C to +85°C  
 Material Black thermoplastic (UL94V0)  
 Terminal material Copper alloy, tinned  
 Terminals 4.8mm push-on/solder  
 Mounting hole Ø12.7mm D-hole, Ø13mm round hole  
 Approvals UL, CSA, VDE (all pending)

Stock No.	Manf Ref'	Type	Unit Price		
			1-9	10-24	25-49
8591025	870	HOLDER & CAP	1.28	1.22	1.15

**5 x 20mm Glass Fuses Fast Acting**



5 x 20mm fast acting fuses with glass case for visible melting element for fault indication.

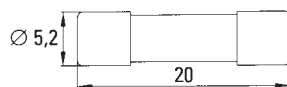
Fuse size 5 x 20mm fast acting  
 Breaking capacity 35A at 250VAC 50-60Hz (250mA - 3.15A)  
 40A (4A), 50A (5A), 63A (6.3A)  
 Voltage 250V  
 Materials Glass tube, Nickel plated brass end caps  
 Temperature -25°C to +70°C  
 Approvals UL, SEMKO, VDE

**Electrical Characteristics**

Ampere rating	Opening Time	
	Min.	Max.
150%	60 mins	
210%		30 mins
400%	0.01s	0.3s
1000%		0.02s

Stock No.	Manf Ref'	Current Rating	Unit Price		
			1-9	10-24	25-49
8591058	1930250	250mA	0.12	0.11	0.11
8591061	1930500	500mA	0.12	0.11	0.11
8591064	1931100	1A	0.12	0.11	0.11
8591067	1931200	2A	0.12	0.11	0.11
8591070	1931315	3.15A	0.12	0.11	0.11
8591073	1931400	4A	0.12	0.11	0.11
8591076	1931500	5A	0.12	0.11	0.11
8591079	1931630	6.3A	0.12	0.11	0.11

**5 x 20mm Glass Fuses Slow Blow**



5 x 20mm slow blow fuses with glass case for visible melting element for fault indication.

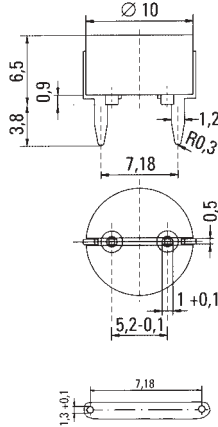
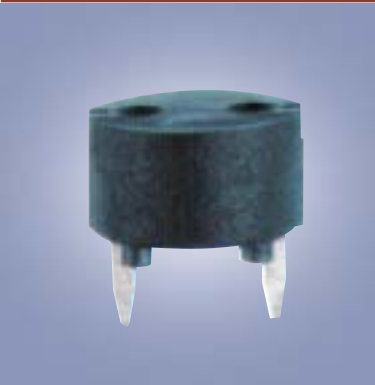
Fuse size 5 x 20mm slow blow  
 Breaking capacity 35A at 250VAC 50-60Hz (250mA - 3.15A)  
 40A (4A), 50A (5A), 63A (6.3A)  
 Voltage 250V  
 Materials Glass tube, Nickel plated brass end caps  
 Temperature -25°C to +70°C  
 Approvals UL, SEMKO, VDE

**Electrical Characteristics**

Ampere rating	Opening Time	
	Min.	Max.
150%	60 mins	
210%		2 mins
400%	0.15s	3s
1000%	0.02s	0.3s

Stock No.	Manf Ref'	Current Rating	Unit Price		
			1-9	10-24	25-49
8591082	1950250	250mA	0.12	0.11	0.11
8591085	1950500	500mA	0.12	0.11	0.11
8591088	1951100	1A	0.12	0.11	0.11
8591091	1951200	2A	0.12	0.11	0.11
8591094	1951315	3.15A	0.12	0.11	0.11
8591097	1951400	4A	0.12	0.11	0.11
8591100	1951500	5A	0.12	0.11	0.11
8591103	1951630	6.3A	0.12	0.11	0.11

TR5 Fuse Holders  
PCB Mounted



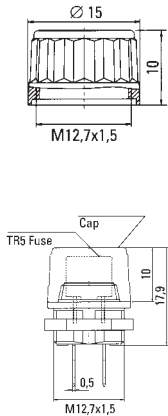
Hole Lay-out

PCB mounted fuseholder suitable for accepting TR5 fuses.

Fuse size TR5  
Max. Current / Power 6.3Amp / 1.6Watt  
Voltage 250V  
Material Black thermoplastic UL94V0  
Terminals Copper alloy, solderable, tinned  
Mounting holes 7.18mm spacing

Stock No.	Manf Ref <sup>1</sup>	Type	Unit Price		
			1-9	10-24	25-49
8591046	559	TR5 FUSE HOLDER	0.30	0.29	0.27

TR5 Fuse Holders  
Panel Mounted



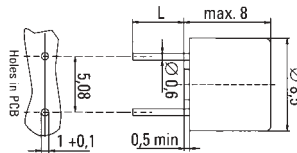
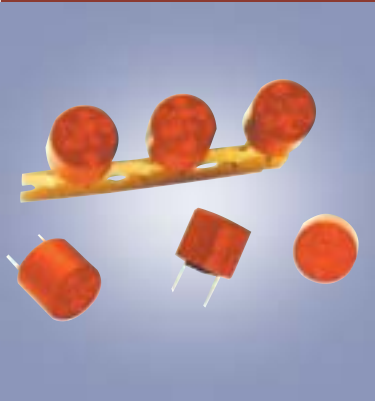
CAP

Panel mounted fuseholder and optional cap suitable for accepting TR5 fuses.

Fuse size TR5  
Max. Current / Power 6.3Amp / 2.5Watt  
Voltage 250V  
Holder material Black thermoplastic UL94V0  
Cap material Transparent thermoplastic UL94V0  
Terminal material Copper alloy, solderable, tinned  
Terminals 2.8mm push-on or solderable  
Mounting hole Ø12.7mm D-hole

Stock No.	Manf Ref <sup>1</sup>	Type	Unit Price		
			1-9	10-24	25-49
8591052	575	TR5 FUSE HOLDER	0.20	0.19	0.18
8591049	570	CAP	0.65	0.62	0.59

TR5 Radial Fuses  
Fast Acting



TR5 fast acting subminiature fuses for reduced PCB space requirements.

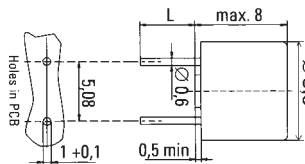
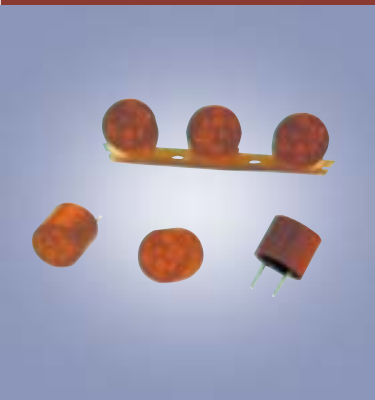
Fuse size TR5, fast acting  
Breaking capacity 50A at 250VAC 50-60Hz  
Voltage 250V  
Material Brown thermoplastic UL94V0  
Terminal material Copper alloy, tin plated  
Temperature -40°C to +85°C  
Approvals UL, SEMKO, VDE

Electrical Characteristics 50mA-4A

Ampere rating	Opening Time	
	Min.	Max.
150%	60 mins	30 mins
210%		
400%	0.01s	3s
1000%		0.2s

Stock No.	Manf Ref <sup>1</sup>	Current Rating	Unit Price		
			1-9	10-24	25-49
8591106	3700100	100mA	0.39	0.37	0.35
8591109	3700250	250mA	0.39	0.37	0.35
8591112	3700500	500mA	0.39	0.37	0.35
8591115	3701100	1A	0.39	0.37	0.35
8591118	3701200	2A	0.39	0.37	0.35
8591121	3701315	3.15A	0.39	0.37	0.35
8591124	3701400	4A	0.39	0.37	0.35

TR5 Radial Fuses  
Slow Blow



TR5 slow blow subminiature fuses for reduced PCB space requirements.

Fuse size TR5 slow blow  
Breaking capacity 50A at 250VAC 50-60Hz  
Voltage 250V  
Material Brown thermoplastic UL94V0  
Terminal material Copper alloy, tin plated  
Temperature -25°C to +70°C  
Approvals UL, SEMKO, VDE

Electrical Characteristics 50mA-5A

Ampere rating	Opening Time	
	Min.	Max.
150%	60 mins	2 mins
210%		
400%	0.15s	3s
1000%	0.02s	0.15s

Stock No.	Manf Ref <sup>1</sup>	Current Rating	Unit Price		
			1-9	10-24	25-49
8591127	3720100	100mA	0.42	0.40	0.38
8591130	3720250	250mA	0.42	0.40	0.38
8591133	3720500	500mA	0.42	0.40	0.38
8591136	3721100	1A	0.42	0.40	0.38
8591139	3721200	2A	0.42	0.40	0.38
8591142	3721315	3.15A	0.42	0.40	0.38
8591145	3721400	4A	0.42	0.40	0.38