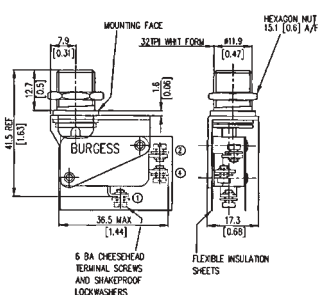


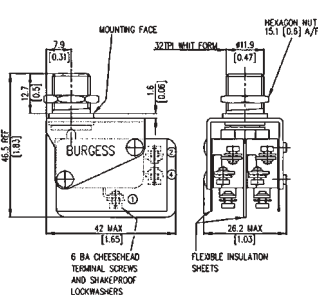


An aesthetically pleasing and technically proficient range of non-illuminated push-button switches with excellent tactile response. Single or double pole with screw terminals, single pole with 6.3mm push-on terminals and single pole sealed/pre-wired with 0.5M of PVC cable versions are available. A wide range of buttons and bezels, flat or shrouded, are available in different sizes and colours, and which should be ordered separately.

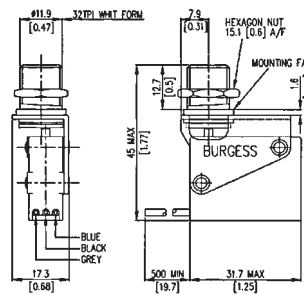
Electrical rating	10A at 250V ac, 10A at 15V dc
Contacts	Single or Double pole changeover
Housing	Glass fibre reinforced nylon
Mounting hole	12.7mm
Sleeve / Frame	Brass / Mild steel zinc plate
Bezels	Brass nickel plated (TB3B-black aluminium)
Buttons	Thermosetting polymer
Temperature	-10°C to +85°C
Switch IP Rating	IP40, (V3ST-IP67)
Button IP Rating	IP65 if used with sealed bezel TBW3S
Approvals	UL, CSA



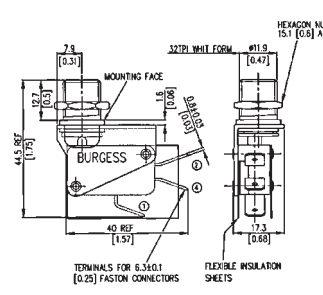
Single Pole Screw Terminals



Double Pole Screw Terminals



Single Pole Sealed/Pre-wired



Single Pole 6.3mm Push-ons



T1 buttons suitable for use with TB1S bezels. For protection against accidental actuation use N09607 shrouded bezel.

T3 buttons suitable for use with TB3S, TB3B and TBW3S bezels.

T6 buttons designed for use as E-stop. No requirements for bezels. Available in red or black. Anodised aluminium.

**NOTE:** A variety of different square buttons and bezels are also available. Please consult sales for more information.

To Order Specify: Switch + Bezel + Button

Stock No.	Manf Ref'	Type	Terminals	Colour	Size/Dia	Unit Price		
						1-4	5-9	10-24
2192743	V3TUL	SINGLE POLE C/O	SCREW			4.45	4.27	3.87
2191330	2V3TUL	DOUBLE POLE C/O	SCREW			6.74	6.47	5.86
2192728	V3STUL	SINGLE POLE C/O	PRE-WIRED			11.01	9.91	9.36
2193157	VCFTUL	SINGLE POLE C/O	6.3MM PUSH-ON			3.96	3.80	3.45
2192617	TB1S	BEZEL FOR T1 BUTTON		CHROME	16MM	0.55	0.52	0.49
2192137	N09607	BEZEL / SHROUD FOR T1 BUTTON		CHROME	25MM	1.00	0.96	0.87
2192560	T1R	BUTTON		RED	9MM	0.51	0.48	0.45
2192551	T1B	BUTTON		BLACK	9MM	0.51	0.48	0.45
2192554	T1BU	BUTTON		BLUE	9MM	0.51	0.48	0.45
2192557	T1G	BUTTON		GREEN	9MM	0.51	0.48	0.45
2192563	T1W	BUTTON		WHITE	9MM	0.51	0.48	0.45
2192566	T1Y	BUTTON		YELLOW	9MM	0.51	0.48	0.45
2192623	TB3S	BEZEL FOR T3 BUTTONS		CHROME	22MM	0.64	0.60	0.57
2192620	TB3B	BEZEL FOR T3 BUTTONS		BLACK	22MM	0.87	0.82	0.77
2192629	TBW3S	BEZEL / SEALED FOR T3 BUTTONS		CHROME	22MM	2.15	2.02	1.91
2192578	T3R	BUTTON		RED	18MM	0.55	0.52	0.49
2192569	T3B	BUTTON		BLACK	18MM	0.55	0.52	0.49
2192572	T3BU	BUTTON		BLUE	18MM	0.55	0.52	0.49
2192575	T3G	BUTTON		GREEN	18MM	0.55	0.52	0.49
2192581	T3W	BUTTON		WHITE	18MM	0.55	0.52	0.49
2192584	T3Y	BUTTON		YELLOW	18MM	0.55	0.52	0.49
2192593	T6B	BUTTON FOR USE WITH SWITCH ONLY		BLACK	40MM	5.31	4.99	4.73
2192596	T6R	BUTTON FOR USE WITH SWITCH ONLY		RED	40MM	5.31	4.99	4.73

## Miniature Push Button Switches



## Switch and Button Assembly



A comprehensive new range of miniature push button actuators which can be fitted to V4/V4NS switches. A simple clip-on attachment PB4 and round push button bezels mounted via a single hole Ø 6.35mm or via the switch mounting holes complete the assembly. The QA4 clip-on attachment provides a simple push button with over-travel also for use with V4/V4NS switches

Electrical rating	5A at 250V ac, 5A at 15V dc
Contacts	Single pole changeover
Housing	Glass fibre reinforced nylon
Mounting hole	6.4mm
Plunger / Frame	Acetal / Glass fibre reinforced nylon
Bezels	Black ABS
Buttons	Coloured ABS
Temperature	-10°C to +85°C
Switch IP Rating	IP40, (V4NS-IP67)

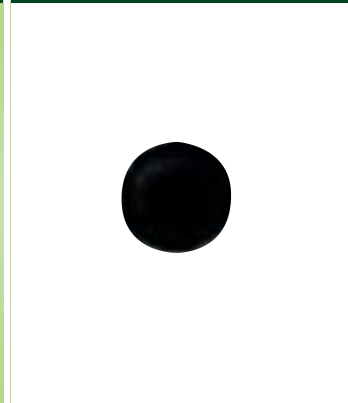
## PBA4 Frame and Actuator



## QA4 Frame and Actuator



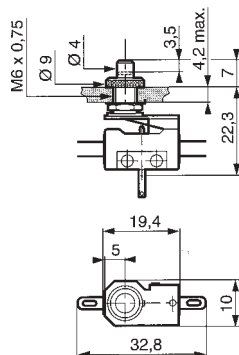
## Button



To Order Specify: Switch + Bezel + Button

Stock No.	Manf Ref'	Type	Terminals	Colour	Size/Dia	Unit Price		
						1-4	5-9	10-24
2192866	V4NT7	SINGLE POLE C/O - IP40	SOLDER			1.18	1.13	1.03
2192821	V4NST7	SINGLE POLE C/O - IP67	SOLDER			1.54	1.48	1.34
2192818	V4NS	SINGLE POLE C/O - IP67	PRE-WIRED			3.56	3.42	3.10
2192491	PBA4	CLIP-ON ACTUATOR				0.63	0.59	0.56
2192527	QA4	FRAME & ACTUATOR				1.42	1.33	1.26
2191444	BZR	BEZEL		BLACK	11MM	0.12	0.11	0.10
2193427	PBRR	BUTTON		RED	8MM	0.14	0.13	0.12
2192494	PBRB	BUTTON		BLACK	8MM	0.14	0.13	0.12
2192497	PBRBU	BUTTON		BLUE	8MM	0.14	0.13	0.12
2192500	PBRG	BUTTON		GREEN	8MM	0.14	0.13	0.12
2192503	PBRW	BUTTON		WHITE	8MM	0.14	0.13	0.12
2192506	PBRY	BUTTON		YELLOW	8MM	0.14	0.13	0.12

## Manually Operated Microswitch, 5 Amp



A 5 amp panel mount push-button changeover microswitch, with 1 N/O and 1 N/C momentary action contacts. Available with end or base mounted solder type terminals. Chrome plated threaded barrel and lock nuts.

Electrical rating	5 Amp at 250 volt
Contacts / Material	1 N/O + 1 N/C / Silver nickel
Mechanical life	5 x 10 <sup>5</sup>
Temperature	-20°C to +85°C
Terminals	Solder type
IP Rating	IP40
Panel cutout for thread	M6 clear
Housing	Polyamide
Approvals	UL

Stock No.	Manf Ref'	Type	Unit Price		
			1-4	5-9	10-24
3265593	85 547 001	END TERMINALS	9.13	8.40	7.21
3265596	85 547 002	BASE TERMINALS	9.13	8.40	7.21