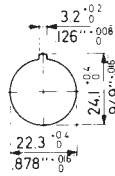
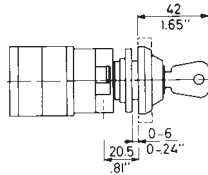


Key Operated OFF-ON Switch, 20 Amp Key Removable

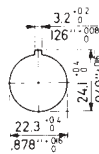
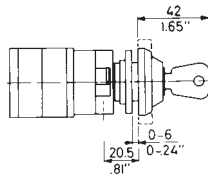


Key operated OFF-ON switches with 60° switching with or without escutcheon. Key is removable in both positions. Single hole Ø22mm mounting suitable for up to 6mm panel thickness. Supplied with key number SF101, although 8 different versions and spares are available.

Rated thermal current 20 A (20 A switch)
 Nominal voltage 690 V
 Rated operational current 20 A (AC21A), 5 A (AC15)
 Dielectric strength 6 kV
 Conforms to IEC 947-3, EN60947-3, VDE 0660 part 107

| Stock No. | Manf Ref ¹ | Type | Unit Price | | |
|---------------------------------|-------------------------------|------|------------|-------|-------|
| | | | 1-4 | 5-9 | 10-24 |
| With Escutcheon Plate | | | | | |
| 8901520 | CA10A200620FT2V750D/3M 1 POLE | | 14.48 | 14.05 | 13.61 |
| 8901523 | CA10A201620FT2V750D/3M 2 POLE | | 15.59 | 15.12 | 14.65 |
| Without Escutcheon Plate | | | | | |
| 8901526 | CA10A200620FT1V750D/3M 1 POLE | | 13.87 | 13.45 | 13.04 |
| 8901529 | CA10A201620FT1V750D/3M 2 POLE | | 14.98 | 14.53 | 14.08 |

Key Operated OFF-ON Switch, 20 Amp Key Trapped in ON

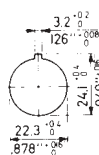
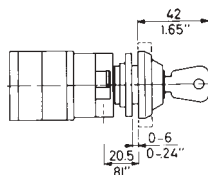


Key operated OFF-ON switches with 60° switching with or without escutcheon. Key is trapped in the 'ON' position and removable in 'OFF'. Single hole Ø22mm mounting suitable for up to 6mm panel thickness. Supplied with key number SF101, although 8 different versions and spares are available.

Rated thermal current 20 A (20 A switch)
 Nominal voltage 690 V
 Rated operational current 20 A (AC21A), 5 A (AC15)
 Dielectric strength 6 kV
 Conforms to IEC 947-3, EN60947-3, VDE 0660 part 107

| Stock No. | Manf Ref ¹ | Type | Unit Price | | |
|---------------------------------|-------------------------------|------|------------|-------|-------|
| | | | 1-4 | 5-9 | 10-24 |
| With Escutcheon Plate | | | | | |
| 8901532 | CA10A200620FT2V750D/3C 1 POLE | | 14.48 | 14.05 | 13.61 |
| 8901535 | CA10A201620FT2V750D/3C 2 POLE | | 15.59 | 15.12 | 14.65 |
| Without Escutcheon Plate | | | | | |
| 8901538 | CA10A200620FT1V750D/3C 1 POLE | | 13.87 | 13.45 | 13.04 |
| 8901541 | CA10A201620FT1V750D/3C 2 POLE | | 14.98 | 14.53 | 14.08 |

Key Operated Changeover Switch with Escutcheon Key Removable



A range of key operated 3 position changeover switches with 60° switching and centre 'OFF', comprising of switch body, escutcheon plate and handle or without escutcheon. One model offers the key to be removable in all positions and the other model offers key trapped in positions 1 & 2. Single hole Ø22mm mounting suitable for up to 6mm panel thickness. Supplied with key number SF101, although 8 different versions and spares are available.

Rated thermal current 20 Amp
 Nominal voltage 690 V
 Rated operational current 20 A (AC21A), 5 A (AC15)
 Motor rating AC-3
 Dielectric strength 6 kV
 Conforms to IEC 947-3, EN60947-3, VDE 0660 part 107

Key Operated Changeover Switch with Escutcheon Key Trapped in 1 & 2



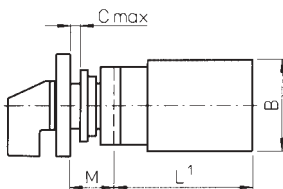
| Stock No. | Manf Ref ¹ | Type | Unit Price | | |
|--|-------------------------------|------|------------|-------|-------|
| | | | 1-4 | 5-9 | 10-24 |
| With Escutcheon Plate, Key Removable | | | | | |
| 8901544 | CA10A210620FT2V750D/3H 1 POLE | | 15.59 | 15.12 | 14.65 |
| 8901547 | CA10A211620FT2V750D/3H 2 POLE | | 18.47 | 17.92 | 17.36 |
| Without Escutcheon Plate, Key Removable | | | | | |
| 8901550 | CA10A210620FT1V750D/3H 1 POLE | | 14.98 | 14.53 | 14.08 |
| 8901553 | CA10A211620FT1V750D/3H 2 POLE | | 17.86 | 17.32 | 16.79 |
| With Escutcheon Plate, Key Trapped 1&2 | | | | | |
| 8901556 | CA10A210620FT2V750D/3C 1 POLE | | 15.59 | 15.12 | 14.65 |
| 8901559 | CA10A211620FT2V750D/3C 2 POLE | | 18.47 | 17.92 | 17.36 |
| Without Escutcheon Plate, Key Trapped 1&2 | | | | | |
| 8901562 | CA10A210620FT1V750D/3C 1 POLE | | 14.98 | 14.53 | 14.08 |
| 8901565 | CA10A211620FT1V750D/3C 2 POLE | | 17.86 | 17.32 | 16.79 |

< 16

Binary Code Decimal Switches 0 - 7



| | | | | | | | | |
|---|---|---|---|---|---|---|---|---|
| | 0 | 1 | 2 | 3 | 4 | 5 | 6 | 7 |
| 1 | | X | X | X | X | | | |
| 2 | | | X | X | | X | X | |
| 3 | | | | X | | | X | X |
| 4 | | | | | X | | | X |
| 5 | | | | | | X | | |
| 6 | | | | | | | X | X |
| 7 | | | | | | | | X |



8 position binary coded decimal switch suitable for electronic applications. They will reliably switch 5mA at 30mVDC on account of a gold plated 'H' bridge contact system. Switch comprises of switch body, escutcheon plate and handle. Single hole Ø22mm mounting suitable for up to 6mm panel thickness.

Rated thermal current 6 Amp
 Nominal voltage 600 V
 Minimum voltage 3 mV
 Rated operational current 5 mA (AC21A)

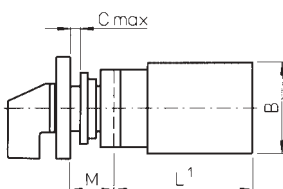
Dimensions (mm) L A B C M
 Escutcheon 43 48 43 6 max 20

| Stock No. | Manf Ref' | Type | Unit Price | | |
|-----------|-------------------|---------|------------|-------|-------|
| | | | 1-4 | 5-9 | 10-24 |
| 8901568 | CAD11A540-600-FT2 | 0-7 BCD | 14.48 | 14.05 | 13.61 |

Binary Code Decimal Switches 0 - 9



| | | | | | | | | | | |
|---|---|---|---|---|---|---|---|---|---|---|
| | 0 | 1 | 2 | 3 | 4 | 5 | 6 | 7 | 8 | 9 |
| 1 | | X | X | X | X | X | X | X | X | |
| 2 | | | X | X | | X | X | | | |
| 3 | | | | X | | | X | | | |
| 4 | | | | | X | | | X | | |
| 5 | | | | | | X | | | | |
| 6 | | | | | | | X | | | |
| 7 | | | | | | | | X | | |
| 8 | | | | | | | | | X | |
| 9 | | | | | | | | | | X |



10 position binary coded decimal switch suitable for electronic applications. They will reliably switch 5mA at 30mVDC on account of a gold plated 'H' bridge contact system. Switch comprises of switch body, escutcheon plate and handle. Single hole Ø22mm mounting suitable for up to 6mm panel thickness.

Rated thermal current 6 Amp
 Nominal voltage 600 V
 Minimum voltage 3 mV
 Rated operational current 5 mA (AC21A)

Dimensions (mm) L A B C M
 Escutcheon 43 48 43 6 max 20

| Stock No. | Manf Ref' | Type | Unit Price | | |
|-----------|-------------------|---------|------------|-------|-------|
| | | | 1-4 | 5-9 | 10-24 |
| 8901571 | CAD11A550-600-FT2 | 0-9 BCD | 17.27 | 16.75 | 16.23 |

OFF-ON Load Break Switch Insulated Enclosure



Off-On rotary cam switches housed in high impact polycarbonate enclosures with escutcheon plate and handle. Earth terminal provided.

Rated thermal current 20 Amp
 Nominal voltage 600 V
 Rated operational current 20 A (AC21A), 5 A (AC15)
 Dielectric strength 6 kV
 IP Rating IP65
 Conduit entries 4 x 20mm ISO
 Conforms to IEC 947-3, EN60947-3, VDE 0660 part 107

Dimensions (mm) H W D
 1 pole 72 64 42
 3 pole 72 64 51

| Stock No. | Manf Ref' | Type | Unit Price | | |
|-----------|-----------|--------|------------|-------|-------|
| | | | 1-4 | 5-9 | 10-24 |
| 8901574 | KN1 | 1 POLE | 12.29 | 11.68 | 11.06 |
| 8901577 | KN3 | 3 POLE | 15.74 | 14.95 | 14.17 |

Changeover with/without OFF, Load Break Switch Insulated Enclosure



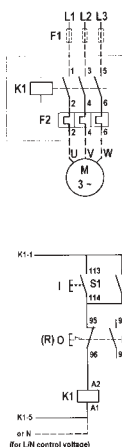
Changeover rotary cam switches with 'OFF' in a 1 pole model or without 'OFF' in a 2 pole model, housed in high impact polycarbonate enclosures with escutcheon plate and handle. Earth terminal provided. Ideal for generator change-over and similar applications.

Rated thermal current 20 Amp
 Nominal voltage 600 V
 Rated operational current 20 A (AC21A), 5 A (AC15)
 Dielectric strength 6 kV
 IP Rating IP65
 Conduit entries 4 x 20mm ISO
 Conforms to IEC 947-3, EN60947-3, VDE 0660 part 107

Dimensions (mm) H W D
 1 pole 72 64 42
 3 pole 72 64 51

| Stock No. | Manf Ref' | Type | Unit Price | | |
|-----------|-----------|--------|------------|-------|-------|
| | | | 1-4 | 5-9 | 10-24 |
| 8901580 | KN2 | 1 POLE | 13.63 | 12.95 | 12.27 |
| 8901583 | KN10 | 2 POLE | 16.93 | 16.08 | 15.24 |

3 Phase Direct-On-Line Motor Starters



3 phase D.O.L. starters housed in high impact polycarbonate enclosures to give stop-start push button control. For reliable operation a thermal overload relay must fitted.

| | | | | |
|-------------------------|--------------------------|-------|-------|------|
| Operational current (A) | 9 | 12 | 16 | 25 |
| Operational power (AC3) | 4kW | 5.5kW | 7.5kW | 11kW |
| Coil voltage (VAC) | 415 | 415 | 415 | 415 |
| IP Rating | IP65 | | | |
| Cable entries | 4 x 20mm knockouts | | | |
| Dimensions (mm) | H = 160, W = 85, D = 110 | | | |
| Approvals | IEC 947, VDE 0660 | | | |

| Stock No. | Manf Ref ¹ | Type | Unit Price | | |
|-----------|-----------------------|-------|------------|-------|-------|
| | | | 1-4 | 5-9 | 10-24 |
| 8901586 | M10D13A415/00000KL | 9AMP | 27.43 | 26.06 | 24.69 |
| 8901589 | M12D13A415/00000KL | 12AMP | 33.14 | 31.48 | 29.83 |
| 8901592 | M15D23A415/00000KL | 16AMP | 41.71 | 39.62 | 37.54 |
| 8901595 | M17D23A415/00000KL | 25AMP | 56.39 | 53.57 | 50.75 |

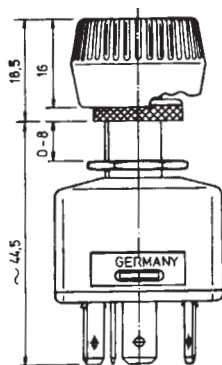
Thermal Overload Relays (to use with the above starters)



A range of thermal overload relays designed for use with the above starters. Manual or automatic reset - supplied set to manual. Accelerated trip in the event of single phasing on 3 phase systems. Volt free trip contact plus N.O. signal contact.

| Stock No. | Manf Ref ¹ | FLC (A) | Unit Price | | |
|-----------|-----------------------|------------|------------|-------|-------|
| | | | 1-4 | 5-9 | 10-24 |
| 8901598 | T9E10085/0130-004A | 0.85 - 1.3 | 23.64 | 22.93 | 22.22 |
| 8901601 | T9E10120/0190-004A | 1.2 - 1.9 | 23.64 | 22.93 | 22.22 |
| 8901604 | T9E10180/0280-004A | 1.8 - 2.8 | 23.64 | 22.93 | 22.22 |
| 8901607 | T9E10270/0420-004A | 2.7 - 4.2 | 23.64 | 22.93 | 22.22 |
| 8901611 | T9E10400/0620-004A | 4 - 6.2 | 23.64 | 22.93 | 22.22 |
| 8901613 | T9E10600/0920-004A | 6 - 9.2 | 23.64 | 22.93 | 22.22 |
| 8901616 | T9E10800/1200-004A | 8 - 12 | 23.64 | 22.93 | 22.22 |
| 8901619 | T9E11100/1600-004A | 11 - 16 | 23.64 | 22.93 | 22.22 |
| 8901622 | T9E11500/2000-004A | 15 - 20 | 28.43 | 27.58 | 26.72 |
| 8901625 | T9E11900/2500-004A | 19 - 25 | 28.43 | 27.58 | 26.72 |

2 Position ON/OFF Rotary Switch

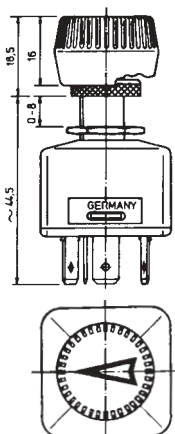


2 position ON/OFF rotary switch suitable for panel mounting. Switch knob is engraved with O (open contact) and I (closed contact).

| | |
|-----------------|----------------------------------|
| Rated current | 15A at 12VDC, 7.5A at 24VDC |
| Rated power | 180W max. |
| Contacts | ON/OFF |
| Material | Self extinguishing thermoplastic |
| IP Rating | IP53 |
| Terminals | 6.3mm push-on |
| Panel cut-out | Ø12mm |
| Panel thickness | 0 - 8mm |

| Stock No. | Manf Ref ¹ | Type | Unit Price | | |
|-----------|-----------------------|--------------|------------|------|-------|
| | | | 1-4 | 5-9 | 10-24 |
| 4040128 | 250000 | 2 POS SWITCH | 3.16 | 3.00 | 2.84 |

4 Position Rotary Switch



4 position OFF/ON/ON/ON rotary switch suitable for panel mounting. As the switch is turned through the 4 positions each contact closes in sequence and opens in the reverse sequence. Switch knob is engraved with an position arrow. A plug type connector is also available to mate with the 4 position switch.

| | |
|----------------------|----------------------------------|
| Rated current | 23A at 12VDC, 11.5A at 24VDC |
| Rated power | 280W max. |
| Contacts | OFF/ON/ON/ON |
| Material | Self extinguishing thermoplastic |
| Terminals | 6.3mm push-on |
| Panel cut-out | Ø12mm |
| Panel thickness | 0 - 8mm |
| Connector dimensions | Ø28mm, 24mm length |

| Stock No. | Manf Ref ¹ | Type | Unit Price | | |
|-----------|-----------------------|--------------|------------|------|-------|
| | | | 1-4 | 5-9 | 10-24 |
| 4040131 | 259000 | 4 POS SWITCH | 6.52 | 6.19 | 5.87 |
| 4040134 | 259991 | CONNECTOR | 0.88 | 0.84 | 0.79 |

<< 16