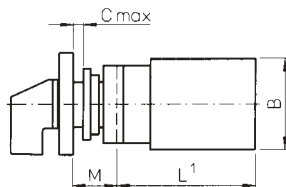


Voltmeter Selector Switch 3 Phase



3 phase, 3 wire voltmeter selector switch with 'OFF'. Single hole Ø22mm mounting.

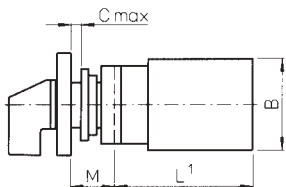
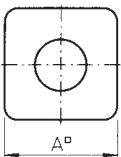
Rated thermal current 20 Amp
 Nominal voltage 690 V
 Motor rating AC-23A 7.5 kW
 Dielectric strength 6 kV
 Conforms to IEC 947-3, EN60947-3, VDE 0660 part 107

Dimensions (mm)	L	A	B	C	M
	52.5	49	43	6 max	20

Note:
 R (red phase) Live 1
 Y (yellow phase) Live 2
 B (blue phase) Live 3
 N Neutral

Stock No.	Manf Ref'	Type	Unit Price		
			1-4	5-9	10-24
8901001	CA10A004622FT2	VOLTAGE SW.	11.03	10.70	10.37

Voltmeter Selector Switch 3 Ph/Ph, 3 Ph/Neutral



3 phase/phase and 3 phase/neutral voltmeter selector switch with centre 'OFF'. Single hole Ø22mm mounting. Two different types of escutcheon plate, 1 standard escutcheon 49 x 49mm and 1 extended escutcheon 49 x 60.4mm with 'Voltmeter' legend at the top.

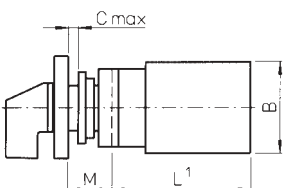
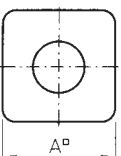
Rated thermal current 20 Amp
 Nominal voltage 690 V
 Motor rating AC-23A 7.5 kW
 Dielectric strength 6 kV
 Conforms to IEC 947-3, EN60947-3, VDE 0660 part 107

Dimensions (mm)	L	A	B	C	M
	52.5	49	43	6 max	20

Note:
 R (red phase) Live 1
 Y (yellow phase) Live 2
 B (blue phase) Live 3
 N Neutral

Stock No.	Manf Ref'	Escutcheon	Unit Price		
			1-4	5-9	10-24
8901004	CA10A007622FT2	49 x 49	13.90	13.48	13.07
8901007	CA10A007623FT2	49 x 60.4	14.44	14.01	13.57

Ammeter Selector Switch



Single pole ammeter selector switches with centre 'OFF' to use with 3 current transformers. Single hole Ø22mm mounting. Two different types of escutcheon plate, 1 standard escutcheon 49 x 49mm and 1 extended escutcheon 49 x 60.4mm with 'Ammeter' legend at the top.

Rated thermal current 20 Amp
 Nominal voltage 690 V
 Motor rating AC-23A 7.5 kW
 Dielectric strength 6 kV
 Conforms to IEC 947-3, EN60947-3, VDE 0660 part 107

Dimensions (mm)	L	A	B	C	M
	52.5	49	43	6 max	20

Note:
 R (red phase) Live 1
 Y (yellow phase) Live 2
 B (blue phase) Live 3
 N Neutral

Stock No.	Manf Ref'	Escutcheon	Unit Price		
			1-4	5-9	10-24
8901010	CA10A048621FT2	49 x 49	13.90	13.48	13.07
8901013	CA10A048622FT2	49 x 60.4	14.44	14.01	13.57

22mm Blanking Plug



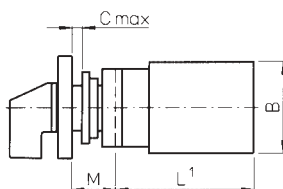
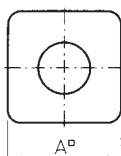
22mm blanking plug suitable for blanking off unused or unwanted holes in panels of up to 6mm thickness. Comprising of threaded blanking plug, rubber washer and locknut.

IP Rating IP65
 Material Plastic

Stock No.	Manf Ref'	Type	Unit Price		
			1-4	5-9	10-24
8901637	PN207/58	BLANKING PLUG	1.58	1.53	1.49

<< 16

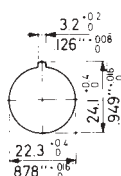
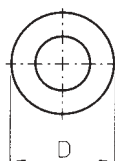
**OFF-ON Switch
2 Position, 20 & 32 AMP
with Escutcheon**



A range of Off-On rotary cam switches with 60° switching, comprising of switch body, escutcheon plate and handle or without escutcheon. Single hole Ø22mm mounting suitable for up to 6mm panel thickness.

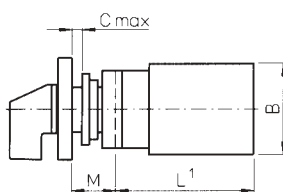
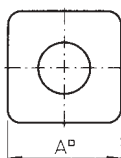
Rated thermal current	20 A (20 A switch), 32 A (32 A switch)					
Nominal voltage	690 V					
Rated operational current	20 A (AC21A), 5 A (AC15) for 20 A switch 32 A (AC21A), 12 A (AC15) for 32A switch					
Dielectric strength	6 kV					
Conforms to	IEC 947-3, EN60947-3, VDE 0660 part 107					
Dimensions (mm)	L	A	B	C	M	D
20 AMP						
1-2 pole	31.7	48	43	6 max	20	39
3-4 pole	41.2	48	43	6 max	20	39
6 pole	50.7	48	43	6 max	20	39
8 pole	60.2	48	43	6 max	20	39
32 AMP						
1-2 pole	37.2	48	46	6 max	20	39
4 pole	79.2	48	46	6 max	20	39

**OFF-ON Switch
2 Position, 20 & 32 AMP
without Escutcheon**



Stock No.	Manf Ref'	Type	Unit Price		
			1-4	5-9	10-24
With Escutcheon Plate, 20 AMP					
8901016	CA10A200620FT2	1 POLE	7.04	6.83	6.62
8901019	CA10A201620FT2	2 POLE	8.15	7.91	7.66
8901022	CA10A202620FT2	3 POLE	9.91	9.61	9.32
8901025	CA10A203620FT2	4 POLE	11.03	10.70	10.37
8901070	CA10A342620FT2	6 POLE	13.90	13.48	13.07
8901073	CA10A344620FT2	8 POLE	16.77	16.27	15.76
Without Escutcheon Plate, 20AMP					
8901379	CA10A200620FT1	1 POLE	6.43	6.24	6.04
8901382	CA10A201620FT1	2 POLE	7.54	7.31	7.09
8901385	CA10A202620FT1	3 POLE	9.30	9.02	8.74
8901388	CA10A203620FT1	4 POLE	10.42	10.11	9.79
8901391	CA10A342620FT1	6 POLE	13.29	12.89	12.49
8901394	CA10A344620FT1	8 POLE	16.16	15.68	15.19
With Escutcheon Plate, 32 AMP					
8901397	CA25A200620FT2	1 POLE	13.42	13.02	12.61
8901400	CA25A201620FT2	2 POLE	15.33	14.87	14.41
8901403	CA25A203620FT2	4 POLE	21.23	20.59	19.96
Without Escutcheon Plate, 32Amp					
8901406	CA25A200620FT1	1 POLE	12.81	12.43	12.04
8901409	CA25A201620FT1	2 POLE	14.72	14.28	13.84
8901412	CA25A203620FT1	4 POLE	18.71	18.15	17.59

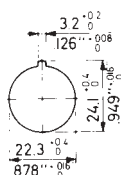
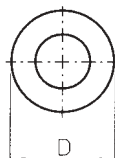
**Changeover Switch
Spring Return to Off,
20AMP, with Escutcheon**



A range of 3 position changeover rotary cam switches with 30° switching and spring return to centre 'OFF', comprising of switch body, escutcheon plate and handle or without escutcheon. Single hole Ø22mm mounting suitable for up to 6mm panel thickness.

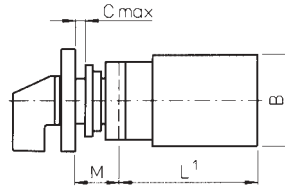
Rated thermal current	20 Amp					
Nominal voltage	690 V					
Rated operational current	20 A (AC21A), 5 A (AC15)					
Motor rating AC-3	5.5kW at 440VAC					
Dielectric strength	6 kV					
Conforms to	IEC 947-3, EN60947-3, VDE 0660 part 107					
Dimensions (mm)	L	A	B	C	M	D
1pole	31.7	49	43	6 max	20	39
2 pole	41.2	49	43	6 max	20	39
3 pole	50.7	49	43	6 max	20	39

**Changeover Switch
Spring Return to Off,
20AMP, without Escutcheon**



Stock No.	Manf Ref'	Type	Unit Price		
			1-4	5-9	10-24
With Escutcheon Plate					
8901415	CA10A214620FT2	1 POLE	8.15	7.91	7.66
8901418	CA10A215620FT2	2 POLE	11.03	10.70	10.37
8901421	CA10A216620FT2	3 POLE	13.90	13.48	13.07
Without Escutcheon Plate					
8901424	CA10A214620FT1	1 POLE	7.54	7.31	7.09
8901427	CA10A215620FT1	2 POLE	10.42	10.11	9.79
8901430	CA10A216620FT1	3 POLE	13.29	12.89	12.49

**Changeover Switch
2 Position, 20AMP
with Escutcheon**

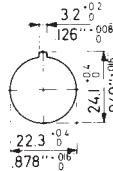
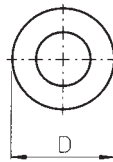


A range of 2 position changeover rotary cam switches with 60° switching without centre 'OFF', comprising of switch body, escutcheon plate and handle or without escutcheon.. Single hole Ø22mm mounting suitable for up to 6mm panel thickness.

Rated thermal current 20 Amp
Nominal voltage 690 V
Rated operational current 20 A (AC21A), 5 A (AC15)
Motor rating AC-3 5.5kW at 440VAC
Dielectric strength 6 kV
Conforms to IEC 947-3, EN60947-3, VDE 0660 part 107

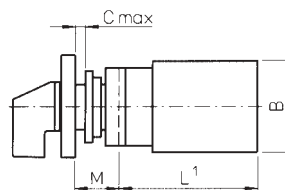
Dimensions (mm)	L	A	B	C	M	D
1 pole	31.7	48	43	6 max	20	39
2 pole	41.2	48	43	6 max	20	39
3 pole	50.7	48	43	6 max	20	39
4 pole	60.2	48	43	6 max	20	39

**Changeover Switch
2 Position, 20AMP
without Escutcheon**



Stock No.	Manf Ref ¹	Type	Unit Price		
			1-4	5-9	10-24
With Escutcheon Plate					
8901040	CA10A220600FT2	1 POLE	8.15	7.91	7.66
8901043	CA10A221600FT2	2 POLE	11.03	10.70	10.37
8901046	CA10A222600FT2	3 POLE	13.90	13.48	13.07
8901049	CA10A223600FT2	4 POLE	16.77	16.27	15.76
Without Escutcheon Plate					
8901433	CA10A220600FT1	1 POLE	7.54	7.31	7.09
8901436	CA10A221600FT1	2 POLE	10.42	10.11	9.79
8901439	CA10A222600FT1	3 POLE	13.29	12.89	12.49
8901442	CA10A223600FT1	4 POLE	16.16	15.68	15.19

**Changeover Switch
3 Position, 20AMP
with Escutcheon**

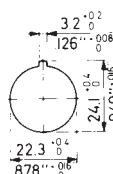
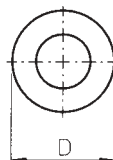


A range of 3 position changeover rotary cam switches with 60° switching and centre 'OFF', comprising of switch body, escutcheon plate and handle or without escutcheon. Single hole Ø22mm mounting suitable for up to 6mm panel thickness.

Rated thermal current 20 Amp
Nominal voltage 690 V
Rated operational current 20 A (AC21A), 5 A (AC15)
Motor rating AC-3 5.5kW at 440VAC
Dielectric strength 6 kV
Conforms to IEC 947-3, EN60947-3, VDE 0660 part 107

Dimensions (mm)	L	A	B	C	M	D
1 pole	31.7	48	43	6 max	20	39
2 pole	41.2	48	43	6 max	20	39
3 pole	50.7	48	43	6 max	20	39
4 pole	60.2	48	43	6 max	20	39

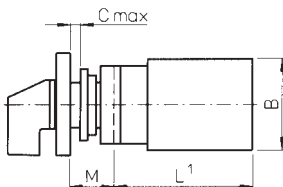
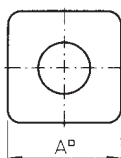
**Changeover Switch
3 Position, 20AMP
without Escutcheon**



Stock No.	Manf Ref ¹	Type	Unit Price		
			1-4	5-9	10-24
With Escutcheon Plate					
8901028	CA10A210620FT2	1 POLE	8.15	7.91	7.66
8901031	CA10A211620FT2	2 POLE	11.03	10.70	10.37
8901034	CA10A212620FT2	3 POLE	13.90	13.48	13.07
8901037	CA10A213620FT2	4 POLE	16.77	16.27	15.76
Without Escutcheon Plate					
8901445	CA10A210620FT1	1 POLE	7.54	7.31	7.09
8901448	CA10A211620FT1	2 POLE	10.42	10.11	9.79
8901451	CA10A212620FT1	3 POLE	13.29	12.89	12.49
8901454	CA10A213620FT1	4 POLE	16.16	15.68	15.19

< 16

3 Position Step Switch without 'OFF', 20AMP with Escutcheon

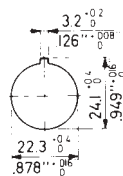
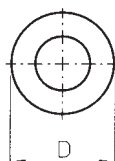


A range of 3 position step rotary cam switches with 60° switching, comprising of switch body, escutcheon plate and handle or without escutcheon. Single hole Ø22mm mounting suitable for up to 6mm panel thickness.

Rated thermal current 20 Amp
 Nominal voltage 690 V
 Rated operational current 20 A (AC21A), 5 A (AC15)
 Motor rating AC-3 5.5kW at 440VAC
 Dielectric strength 6 kV
 Conforms to IEC 947-3, EN60947-3, VDE 0660 part 107

Dimensions (mm)	L	A	B	C	M	D
1pole	41.2	48	43	6 max	20	39
2 pole	50.7	48	43	6 max	20	39
3 pole	69.7	48	43	6 max	20	39

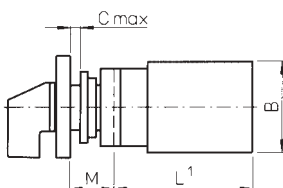
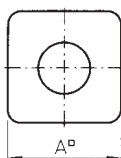
3 Position Step Switch without 'OFF', 20AMP without Escutcheon



Stock No.	Manf Ref'	Type	Unit Price		
			1-4	5-9	10-24
With Escutcheon Plate					
8901052	CA10A230600FT2	1 POLE	9.91	9.61	9.32
8901058	CA10A250600FT2	2 POLE	13.90	13.48	13.07
8901064	CA10A270600FT2	3 POLE	18.52	17.96	17.41
Without Escutcheon Plate					
8901457	CA10A230600FT1	1 POLE	9.30	9.02	8.74
8901460	CA10A250600FT1	2 POLE	13.29	12.89	12.49
8901463	CA10A270600FT1	3 POLE	17.91	17.37	16.84

16 >

4 Position Step Switch without 'OFF', 20AMP with Escutcheon

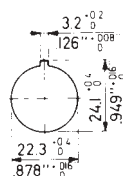
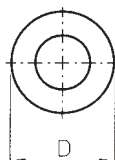


A range of 4 position step rotary cam switches with 60° switching, comprising of switch body, escutcheon plate and handle or without escutcheon. Single hole Ø22mm mounting suitable for up to 6mm panel thickness.

Rated thermal current 20 Amp
 Nominal voltage 690 V
 Rated operational current 20 A (AC21A), 5 A (AC15)
 Motor rating AC-3 5.5kW at 440VAC
 Dielectric strength 6 kV
 Conforms to IEC 947-3, EN60947-3, VDE 0660 part 107

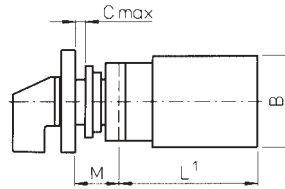
Dimensions (mm)	L	A	B	C	M	D
1pole	41.2	48	43	6 max	20	39
2 pole	60.2	48	43	6 max	20	39
3 pole	79.2	48	43	6 max	20	39

4 Position Step Switch without 'OFF', 20AMP without Escutcheon



Stock No.	Manf Ref'	Type	Unit Price		
			1-4	5-9	10-24
With Escutcheon Plate					
8901055	CA10A231600FT2	1 POLE	11.03	10.70	10.37
8901061	CA10A251600FT2	2 POLE	16.77	16.27	15.76
8901067	CA10A271600FT2	3 POLE	22.51	21.83	21.16
Without Escutcheon Plate					
8901466	CA10A231600FT1	1 POLE	10.42	10.11	9.79
8901469	CA10A251600FT1	2 POLE	16.16	15.68	15.19
8901472	CA10A271600FT1	3 POLE	21.90	21.24	20.59

5 Position Step Switch without 'OFF', 20AMP with Escutcheon

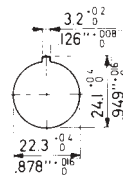
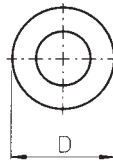


A range of 5 position step rotary cam switches with 60° switching, comprising of switch body, escutcheon plate and handle or without escutcheon. Single hole Ø22mm mounting suitable for up to 6mm panel thickness.

Rated thermal current 20 Amp
 Nominal voltage 690 V
 Rated operational current 20 A (AC21A), 5 A (AC15)
 Motor rating AC-3 5.5kW at 440VAC
 Dielectric strength 6 kV
 Conforms to IEC 947-3, EN60947-3, VDE 0660 part 107

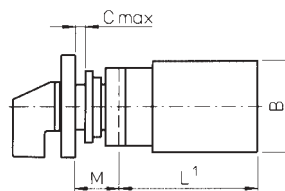
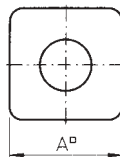
Dimensions (mm)	L	A	B	C	M	D
1 pole	50.7	48	43	6 max	20	39
2 pole	69.7	48	43	6 max	20	39
3 pole	98.2	48	43	6 max	20	39

5 Position Step Switch without 'OFF', 20AMP without Escutcheon



Stock No.	Manf Ref'	Type	Unit Price		
			1-4	5-9	10-24
With Escutcheon Plate					
8901475	CA10A232600FT2	1 POLE	12.78	12.40	12.01
8901478	CA10A252600FT2	2 POLE	19.64	19.05	18.46
8901481	CA10A272600FT2	3 POLE	27.13	26.32	25.50
Without Escutcheon Plate					
8901484	CA10A232600FT1	1 POLE	12.17	11.80	11.44
8901487	CA10A252600FT1	2 POLE	19.03	18.46	17.89
8901490	CA10A272600FT1	3 POLE	26.52	25.72	24.93

6 Position Step Switch without 'OFF', 20AMP with Escutcheon

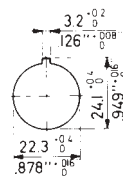
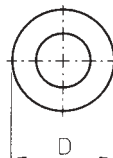


A range of 6 position step rotary cam switches with 60° switching, comprising of switch body, escutcheon plate and handle or without escutcheon. Single hole Ø22mm mounting suitable for up to 6mm panel thickness.

Rated thermal current 20 Amp
 Nominal voltage 690 V
 Rated operational current 20 A (AC21A), 5 A (AC15)
 Motor rating AC-3 5.5kW at 440VAC
 Dielectric strength 6 kV
 Conforms to IEC 947-3, EN60947-3, VDE 0660 part 107

Dimensions (mm)	L	A	B	C	M	D
1 pole	50.7	48	43	6 max	20	39
2 pole	79.2	48	43	6 max	20	39
3 pole	107.7	48	43	6 max	20	39

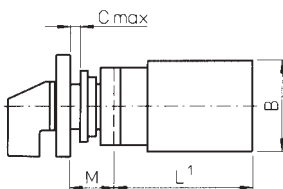
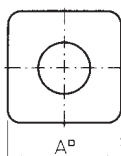
6 Position Step Switch without 'OFF', 20AMP without Escutcheon



Stock No.	Manf Ref'	Type	Unit Price		
			1-4	5-9	10-24
With Escutcheon Plate					
8901493	CA10A233600FT2	1 POLE	13.90	13.48	13.07
8901496	CA10A253600FT2	2 POLE	22.51	21.83	21.16
8901499	CA10A273600FT2	3 POLE	31.12	30.19	29.25
Without Escutcheon Plate					
8901502	CA10A233600FT1	1 POLE	13.29	12.89	12.49
8901505	CA10A253600FT1	2 POLE	21.90	21.24	20.59
8901508	CA10A273600FT1	3 POLE	30.51	29.59	28.68

<< 16

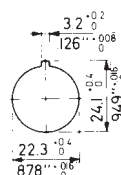
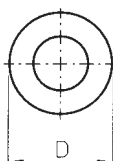
**Motor Reversing
3 Phase
With Escutcheon**



3 phase, 3 pole motor reversing rotary cam switch with 60° switching, comprising of switch body, escutcheon plate and handle or without escutcheon. Single hole Ø22mm mounting suitable for up to 6mm panel thickness.

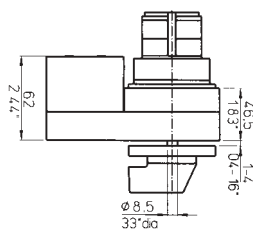
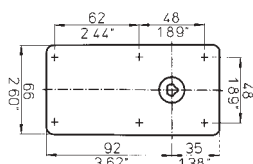
Rated thermal current	20 Amp					
Nominal voltage	690 V					
Rated operational current	20 A (AC21A), 5 A (AC15)					
Motor rating AC-3	5.5kW at 440VAC					
Dielectric strength	6 kV					
Conforms to	IEC 947-3, EN60947-3, VDE 0660 part 107					
Dimensions (mm)	L	A	B	C	M	D
3 pole	50.7	49	43	6 max	20	39

**Motor Reversing
3 Phase
Without Escutcheon**



Stock No.	Manf Ref'	Type	Unit Price		
			1-4	5-9	10-24
With Escutcheon Plate					
8901076	CA10A401620FT2	3 POLE	12.78	12.40	12.01
Without Escutcheon Plate					
8901511	CA10A401620FT1	3 POLE	12.17	11.80	11.44

**4 Position Step Switch
Without 'OFF', 25AMP
Electro-Mechanical Interlock**

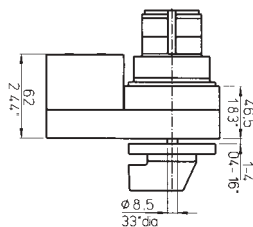
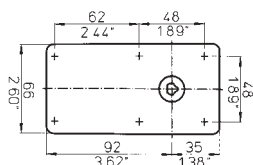


A 3 pole, 4 position step switch with 60° switching, comprising of switch body, escutcheon plate and handle. This switch is fitted with an electro-mechanical interlock which prevents operation of the switch when energised. 4 hole mounting suitable for up to 4mm panel thickness.

Rated thermal current	25 Amp					
Nominal voltage	690 V					
Rated operational current	25 A (AC21A), 8 A (AC15)					
Motor rating AC-3	7.5kW at 440VAC					
Dielectric strength	6 kV					
Interlock coil consumption	55VA (pull-in), 8VA 2.5W (seal-in)					
Interlock coil voltage	230 VAC					
Conforms to	IEC 947-3, EN60947-3, VDE 0660 part 107					
Depth behind panel	106.6mm					

Stock No.	Manf Ref'	Type	Unit Price		
			1-4	5-9	10-24
8901514	CA20B-SP2	3 POLE	92.16	89.40	86.63

**7 Position Step Switch
Without 'OFF', 50AMP
Electro-Mechanical Interlock**



A 1 pole, 7 position step switch with 45° switching, comprising of switch body, escutcheon plate and handle. This switch is fitted with an electro-mechanical interlock which prevents operation of the switch when energised. 4 hole mounting suitable for up to 4mm panel thickness.

Rated thermal current	50 Amp					
Nominal voltage	690 V					
Rated operational current	40 A (AC21A), 16 A (AC15)					
Motor rating AC-3	15kW at 440VAC					
Dielectric strength	6 kV					
Interlock coil rating	55VA (pull-in), 8VA 2.5W (seal-in)					
Interlock coil voltage	230 VAC					
Conforms to	IEC 947-3, EN60947-3, VDE 0660 part 107					
Depth behind panel	100mm					

Stock No.	Manf Ref'	Type	Unit Price		
			1-4	5-9	10-24
8901517	C32-SP3	1 POLE	96.64	93.74	90.84