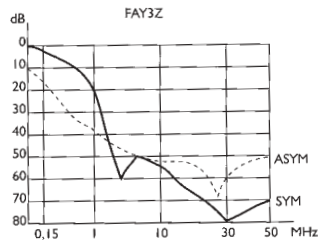


**FA Series  
General Purpose Filters**

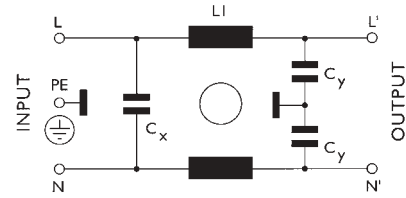


**Attenuation Graph for  
FA-3Z**



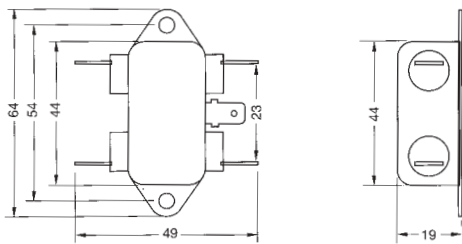
Single phase general purpose chassis mounting filters.

- Rated voltage 250 VAC
- Leakage current 0.25mA
- Terminals 6.3mm push-on
- Approvals VDE, UL (pending on 20 Amp model)
- All filters (20 Amp excepted) are also available with 2mtr flying leads, please consult sales.

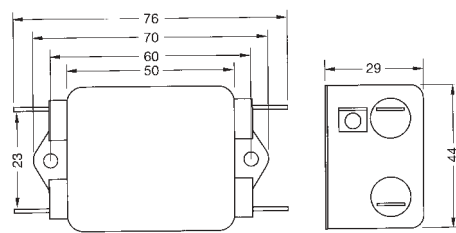


**FA Series Circuit Schematic**

**Case size 1-0**



**Case size 2-0**



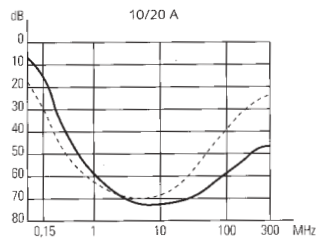
< 15

Stock No.	Manf Ref <sup>1</sup>	Current	Case size	Unit Price		
				1-9	10-99	100+
6101000	FA-1Z	1A	1-0 (64MM)	6.52	5.87	4.56
6101003	FA-3Z	3A	1-0 (64MM)	6.52	5.87	4.56
6101006	FA-6Z	6A	1-0 (64MM)	6.52	5.87	4.56
6101027	FA-10Z	10A	2-0 (76MM)	8.91	8.02	6.24

**FB Series  
High Attenuation**

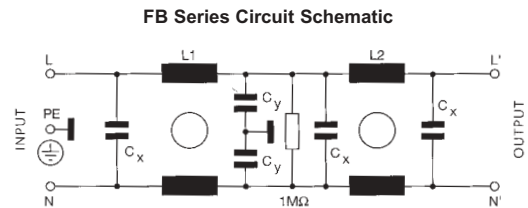


**Attenuation Graph for  
FB10Z & FB20Z**



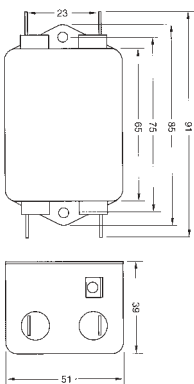
A range of two stage, single phase chassis mounting high attenuation filters which are suitable for a wide range of applications.

- Rated voltage 250 VAC
- Leakage current 0.5mA
- Terminals 6.3mm push-on
- Approvals VDE, UL (pending on 20 Amp model)
- All filters (20 Amp excepted) are also available with 2mtr flying leads, please consult sales.

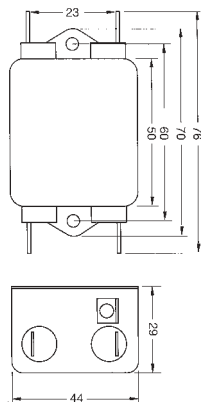


**FB Series Circuit Schematic**

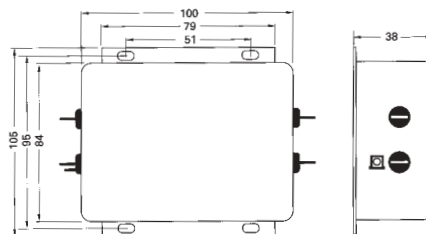
**Case size 6-0**



**Case size 2-0**



**Case size 18-0**

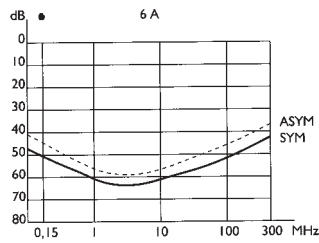


Stock No.	Manf Ref <sup>1</sup>	Current	Case size	Unit Price		
				1-9	10-99	100+
6101039	FB-1Z	1A	2-0	10.70	9.63	7.49
6101042	FB-2Z	2A	2-0	10.70	9.63	7.49
6101045	FB-5Z	5A	2-0	10.70	9.63	7.49
6101057	FB-10Z	10A	6-0	12.89	11.60	9.02
6101063	FB-20Z/18	20A	18-0	23.46	21.11	16.42

**FC Series  
High Performance**



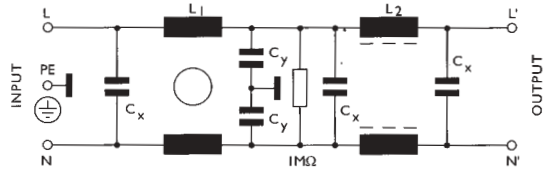
**Attenuation Graph for  
FB-6Z**



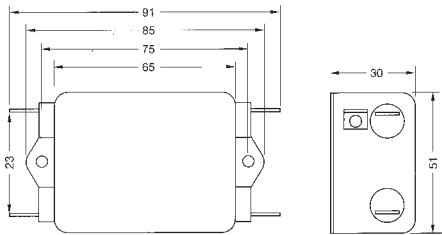
Two stage, single phase chassis mounting high performance filters which are suitable for a wide range of applications, such as small drives.

- Rated voltage 250 VAC
- Leakage current 0.5mA
- Terminals 6.3mm push-on
- Approvals VDE, UL
- All filters are also available with 2mtr flying leads, please consult sales.

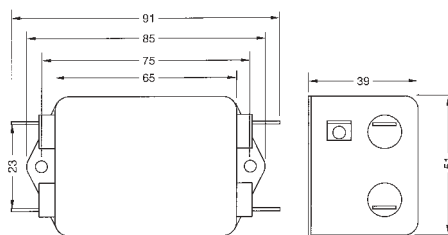
**FC Series Circuit Schematic**



**Case size 4-0**



**Case size 6-0**

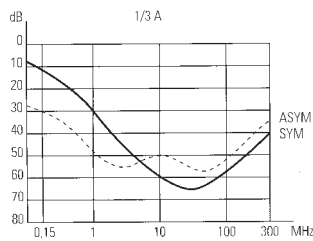


Stock No.	Manf Ref'	Current	Case size	Unit Price		
				1-9	10-99	100+
6101069	FC-3Z	3A	4-0	11.84	10.66	8.29
6101072	FC-6Z	6A	6-0	11.84	10.66	8.29
6101081	FC-10Z	10A	6-0	13.21	11.89	9.25

**FE Series  
General Use Filters**



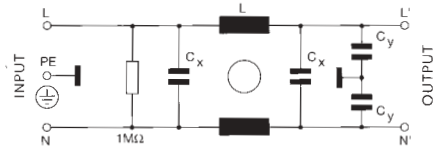
**Attenuation Graph for  
FE-1Z & FE-3Z**



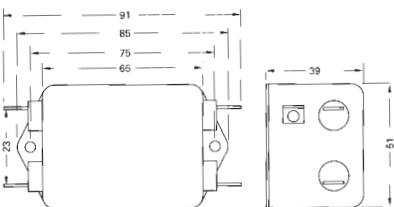
Single phase general purpose chassis mounting filters which are suitable for a wide range of applications.

- Rated voltage 250 VAC
- Leakage current 0.5mA
- Terminals 6.3mm (Z suffix), M6 screw (W suffix)
- Approvals VDE, UL (pending on 20 Amp model)
- All filters (20 & 30Amp excepted) are also available with 2mtr flying leads, please consult sales.

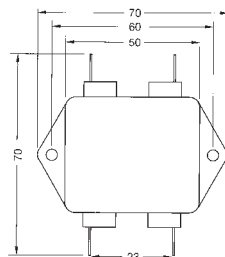
**FE Series Circuit Schematic**



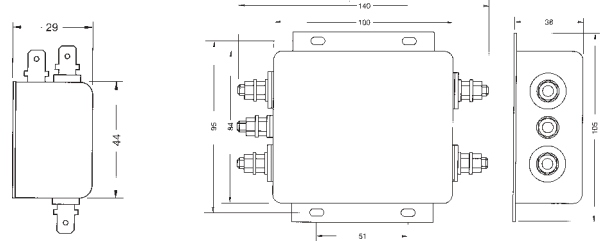
**Case size 6-0**



**Case size 3-0**



**Case size 8-3**

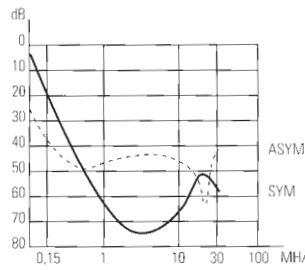


Stock No.	Manf Ref'	Current	Case size	Unit Price		
				1-9	10-99	100+
6101162	FE-10Z	10A	3-0	8.34	7.51	5.84
6101168	FE-20Z	20A	6-0	13.72	12.35	9.60
6101171	FE-20W	20A	8-3	30.58	27.52	21.41
6101174	FE-30W	30A	8-3	30.58	27.52	21.41

**FEH Series  
High Attenuation Filters**



**Attenuation Graph for  
FEH-3Z**

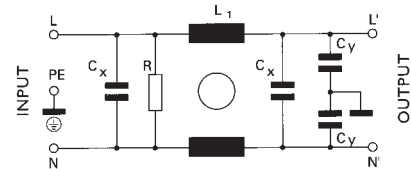


Single phase high attenuation chassis mounting filters which are suitable for a wide range of applications.

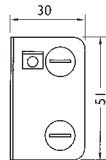
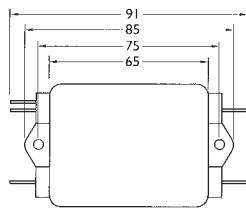
- Rated voltage 250 VAC
- Leakage current 0.5mA, 1mA (FEH-30W)
- Terminals 6.3mm (Z suffix), M4 screw (W suffix)
- Approvals VDE, UL (due end 200)

• All filters (20 & 30Amp excepted) are also available with 2mtr flying leads, please consult sales.

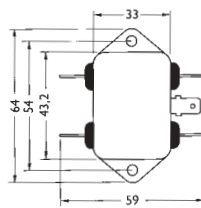
**FEH Series Circuit Schematic**



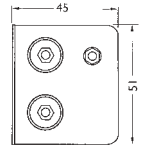
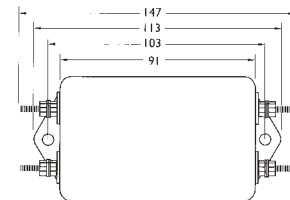
**Case size 4-0**



**Case size 13-0**



**Case size 6-5**

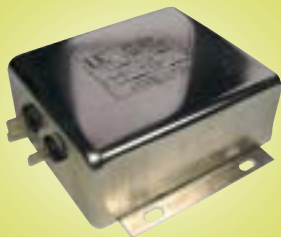


< 15

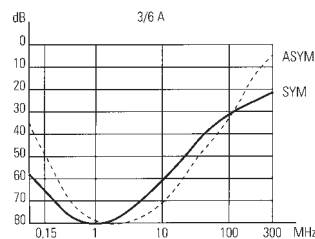
**Case size 3-0, refer to FE series**

Stock No.	Manf Ref <sup>1</sup>	Current	Case size	Unit Price		
				1-9	10-99	100+
6101177	FEH-1Z	1A	13-0	9.50	8.55	6.65
6101180	FEH-3Z	3A	13-0	9.50	8.55	6.65
6101183	FEH-6Z	6A	13-0	9.50	8.55	6.65
6101186	FEH-10Z	10A	13-0	9.50	8.55	6.65
6101201	FEH-16Z	16A	3-0	9.92	8.93	6.94
6101207	FEH-20Z	20A	4-0	13.71	12.34	9.60
6101210	FEH-30W	30A	6-5	28.27	25.44	19.79

**FF Series  
Very High Attenuation**



**Attenuation Graph for  
FF-3Z, FF-6Z**

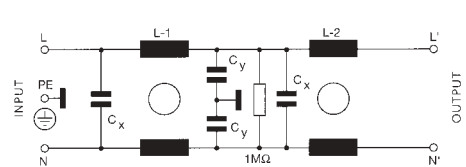


Single phase, very high attenuation, chassis mounting filters.

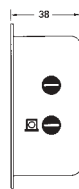
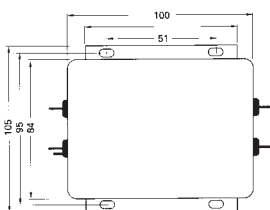
- Rated voltage 250 VAC
- Leakage current 0.25mA
- Terminals 6.3mm (Z suffix), M6 stud (W suffix)
- Approvals VDE, UL (pending on 20 Amp model)

• All filters (10 & 20Amp excepted) are also available with 2mtr flying leads, please consult sales.

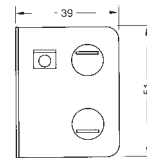
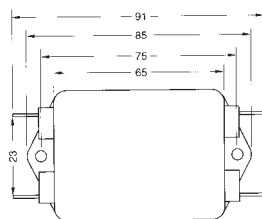
**FF Series Circuit Schematic**



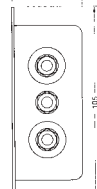
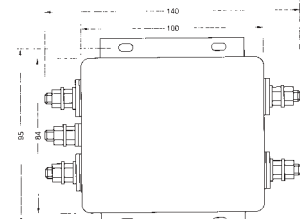
**Case size 18-0**



**Case size 6-0**



**Case size 8-3**



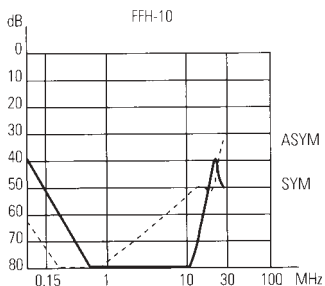
**Case size 4-0, refer to FEH series**

Stock No.	Manf Ref <sup>1</sup>	Current	Case size	Unit Price		
				1-9	10-99	100+
6101213	FF-3Z	3A	4-0	10.19	9.17	7.13
6101216	FF-6Z	6A	4-0	10.19	9.17	7.13
6101225	FF-10Z	10A	6-0	11.69	10.52	8.18
6101228	FF-20Z	20A	18-0	13.71	12.34	9.60
6101231	FF-20W	20A	8-3	35.67	32.10	24.97

**FFH Series, 2 Stage Very High Attenuation**



**Attenuation Graph for FFH-10Z**

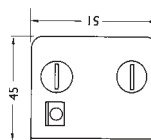


Single phase 2 stage very high attenuation chassis mounting filters suitable for AC variable speed drives.

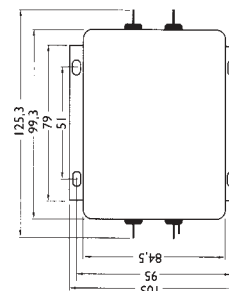
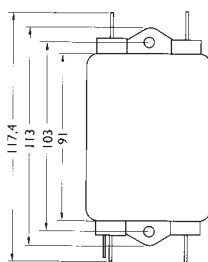
Rated voltage 250 VAC  
 Leakage current 0.5mA  
 Terminals 6.3mm push-on  
 Approvals VDE, UL (due end 200)

• All filters are also available with 2mtr flying leads, please consult sales.

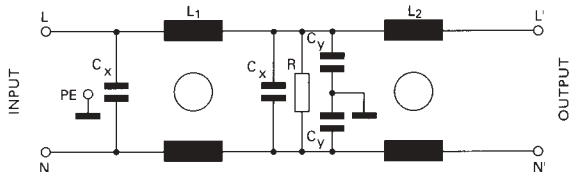
**Case size 6-3**



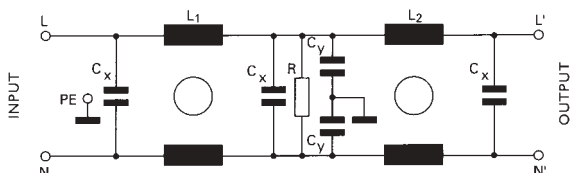
**Case size 8-0**



**FFH-1Z, FFH-3Z Series Circuit Schematic**



**FFH-6Z, FFH-10Z, FFH-12Z, FFH-16Z Series Circuit Schematic**



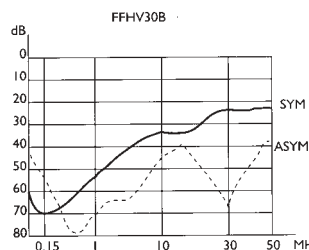
Case size 4-0, refer to FEH series  
 Case size 6-0, refer to FF series

Stock No.	Manf Ref <sup>1</sup>	Current	Case size	Unit Price		
				1-9	10-99	100+
6101234	FFH-1Z	1A	4-0	14.04	12.64	9.83
6101240	FFH-3Z	3A	6-0	14.63	13.17	10.24
6101246	FFH-6Z	6A	6-3	26.31	23.68	18.42
6101252	FFH-10Z	10A	6-3	27.39	24.65	19.17
6101255	FFH-12Z	12A	6-3	28.99	26.09	20.29
6101261	FFH-16Z	16A	8-0	28.99	26.09	20.29

**FFHV Series, 2 Stage for Variable Speed Drives**



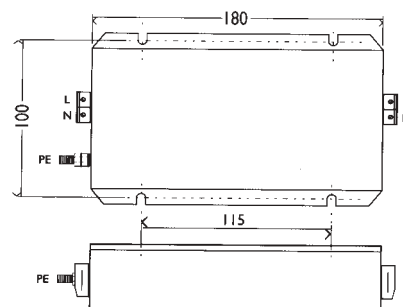
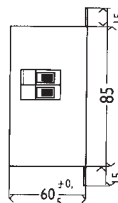
**Attenuation Graph for FFHV-30B**



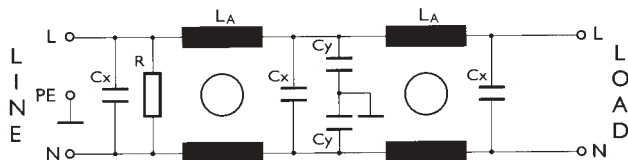
A chassis mounted, single phase filter, suitable for AC variable speed drives.

Rated voltage 250 VAC  
 Leakage current 3.4mA  
 Terminals Terminal block  
 Approvals VDE, UL

**Case size 47**



**FFHV Series Circuit Schematic**



Stock No.	Manf Ref <sup>1</sup>	Current	Case size	Unit Price		
				1-4	5-9	10+
6101837	FFHV-30B	30A	47	56.54	51.45	46.36