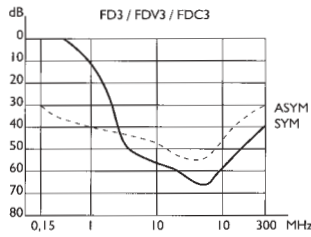


**FD/FDC Series
IEC Connector**



**Attenuation Graph for
FD-3Z**



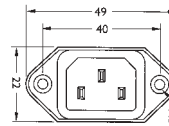
Single phase general purpose chassis mounting filters with IEC connector which are suitable for a wide range of applications.

Rated voltage 250 VAC
Leakage current 0.25mA
Earth line choke FDC only
Terminals 6.3mm push-on
Approvals UL, VDE

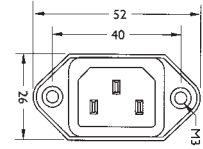
Note:

• All filters are also available with 2mtr flying leads, please consult sales

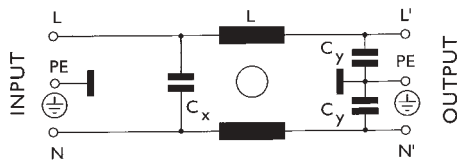
Case size 9-0



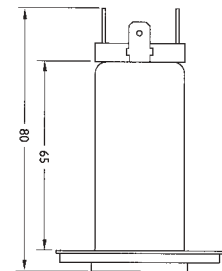
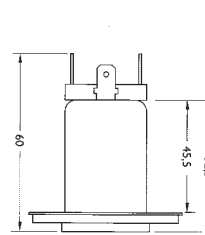
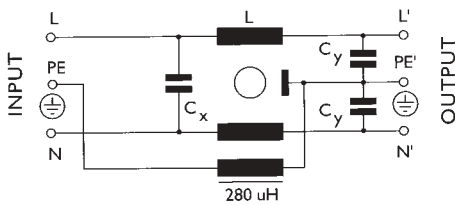
Case size 19-0



FD Series Circuit Schematic



FDC Series Circuit Schematic

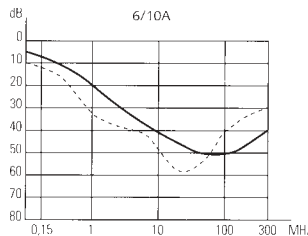


Stock No.	Manf Ref'	Current	Case size	Unit Price		
				1-9	10-99	100+
6101087	FD-1Z	1A	9-0	4.48	4.03	3.14
6101090	FD-3Z	3A	9-0	4.48	4.03	3.14
6101093	FD-6Z	6A	9-0	4.48	4.03	3.14
6101105	FD-10Z	10A	9-0	6.15	5.54	4.31
6101108	FDC-1Z	1A	19-0	5.83	5.25	4.08
6101111	FDC-3Z	3A	19-0	5.83	5.25	4.08
6101114	FDC-6Z	6A	19-0	5.83	5.25	4.08

**FI Series
IEC Connector**



**Attenuation Graph for
FI-6Z-41**



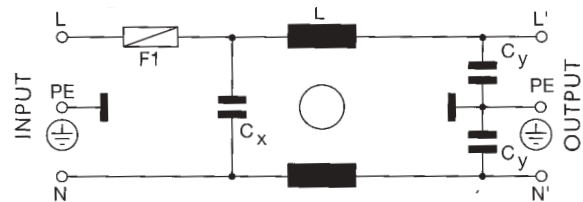
Single phase general purpose chassis mounting filters with IEC connector which are suitable for a wide range of applications. Inputs are protected by 1 fuse on the live line.

Rated voltage 250 VAC
Leakage current 0.25mA
Terminals 6.3mm push-on
Approvals UL, VDE

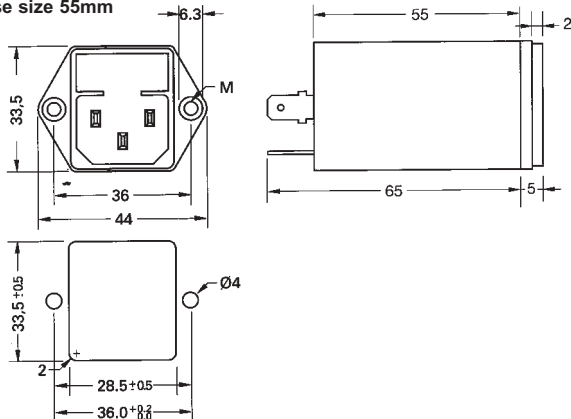
Note:

- Medical version available (no Cy capacitors, providing a leakage current of 5µA)
- Filters with 2 protection fuses also available.
- All filters are also available with 2mtr flying leads, please consult sales.

FI Series Circuit Schematic



Case size 55mm

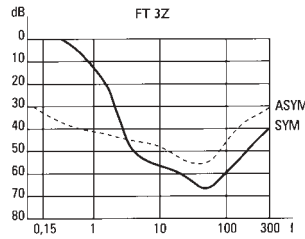


Stock No.	Manf Ref'	Current	Case size	Unit Price		
				1-9	10-99	100+
6101291	FI-2Z-41	1A	41MM	6.61	5.95	4.63
6101294	FI-4Z-41	4A	41MM	6.61	5.95	4.63
6101297	FI-6Z-41	6A	41MM	6.61	5.95	4.63
6101300	FI-10Z-55	10A	55MM	7.96	7.16	5.57

**FT Series
Snap-in Panel Mount
IEC Connector**



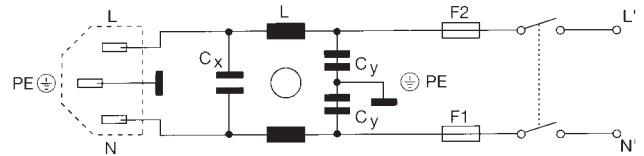
Attenuation Graph for FT-3Z



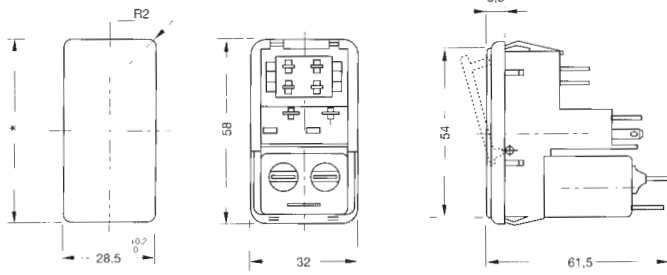
Single phase filters with fuse and switch and IEC connector. Snap-in panel mounting for fast easy assembly and they are suitable for a wide range of applications.

Rated voltage 250 VAC
Leakage current 0.25mA
Terminals 6.3mm push-ons
Panel thickness 0.8mm - 3.2mm
Approvals UL, VDE

FT Series Circuit Schematic



Case size 18-0



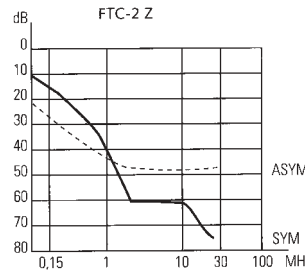
< 15

Stock No.	Manf Ref ¹	Current	Case size	Unit Price		
				1-9	10-99	100+
6101444	FT-1Z	1A	18-0	12.89	11.60	9.02
6101447	FT-3Z	3A	18-0	12.89	11.60	9.02
6101450	FT-6Z	6A	18-0	12.89	11.60	9.02

**FTC Series
IEC, 2 Fuses & Switch**



Attenuation Graph for FTC-2Z



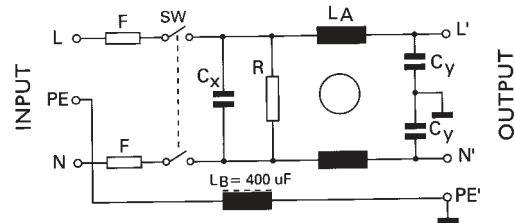
Single phase monoblock filters with IEC connector, 2 fuses (5x20mm) and switch. Suitable for panel mounting and used for a wide range of applications.

Rated voltage 250 VAC
Leakage current 0.25mA (Z & ZC suffix), 5µA (ZM suffix)
Terminals 6.3mm push-on
Approvals UL, VDE

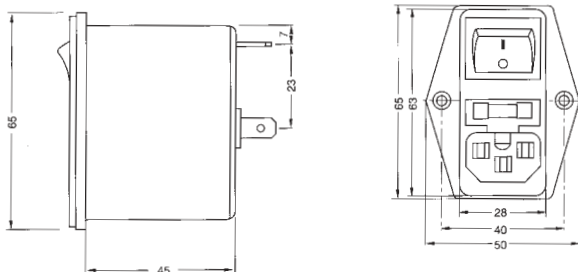
Note: Filters which are suffixed M are medical grade, and are for use on equipment in the medical industry.

FTC-ZC Circuit Schematic

(FTC-Z has no earth line choke, FTC-ZM has no earth line choke & no CY capacitors)



Case size 45mm

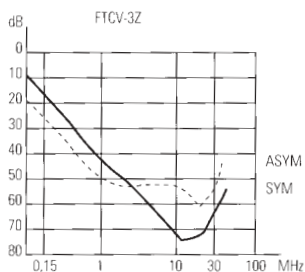


Stock No.	Manf Ref ¹	Current	Case size	Unit Price		
				1-9	10-99	100+
6101498	FTC-1Z	1A	45MM	13.17	11.85	9.22
6101501	FTC-2Z	2A	45MM	13.17	11.85	9.22
6101504	FTC-4Z	4A	45MM	13.17	11.85	9.22
6101507	FTC-6Z	6A	45MM	13.17	11.85	9.22
6101510	FTC-1ZC	1A	45MM	13.75	12.38	9.63
6101513	FTC-2ZC	2A	45MM	13.75	12.38	9.63
6101516	FTC-4ZC	4A	45MM	13.75	12.38	9.63
6101519	FTC-6ZC	6A	45MM	13.75	12.38	9.63
6101522	FTC-1ZM	1A	45MM	12.99	11.69	9.09
6101525	FTC-2ZM	2A	45MM	12.99	11.69	9.09
6101528	FTC-4ZM	4A	45MM	12.99	11.69	9.09
6101531	FTC-6ZM	6A	45MM	12.99	11.69	9.09

**FTCV Series
IEC Connection, 2 Fuses,
Switch & Voltage Selector**



**Attenuation Graph for
FTCV-3Z**

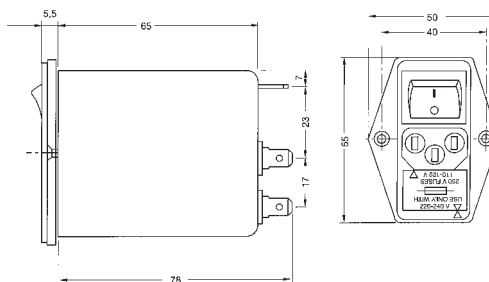


Single phase monoblock filters with IEC connector, 2 fuses, switch and voltage selector. Suitable for panel mounting and used for a wide range of applications.

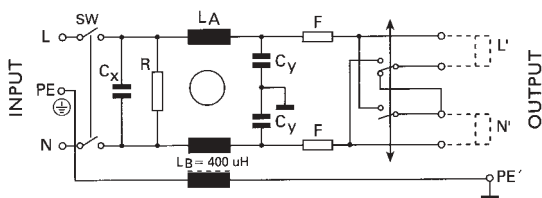
Rated voltage 250 VAC
Leakage current 0.35mA (Z & ZC suffix), 5µA (ZM suffix)
Terminals 6.3mm push-on
Approvals UL, VDE (due end 200)

Note: Filters which are suffixed M are medical grade, and are for use on equipment in the medical industry.

Case size 65mm



FTCV-ZC Circuit Schematic
FTCV-Z has no earth line choke
FTCV-ZM has no earth line choke & no CY capacitors

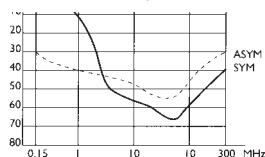


Stock No.	Manf Ref ¹	Current	Case size	Unit Price		
				1-9	10-99	100+
6101534	FTCV-1Z	1A	65MM	25.20	22.68	17.64
6101537	FTCV-2Z	2A	65MM	25.20	22.68	17.64
6101543	FTCV-6Z	6A	65MM	25.20	22.68	17.64
6101546	FTCV-1ZC	1A	65MM	25.91	23.32	18.14
6101549	FTCV-2ZC	2A	65MM	25.91	23.32	18.14
6101555	FTCV-6ZC	6A	65MM	25.91	23.32	18.14
6101558	FTCV-1ZM	1A	65MM	24.68	22.21	17.28
6101561	FTCV-2ZM	2A	65MM	24.68	22.21	17.28
6101567	FTCV-6ZM	6A	65MM	24.68	22.21	17.28

**FDV & FDY Series
IEC Connection**



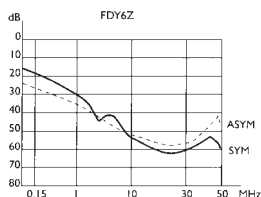
**Attenuation Graph for
FDV3**



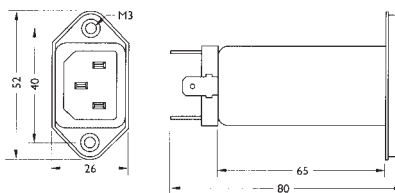
Single phase filters for general use with greater attenuation at the lower frequencies than the FD series. Suitable for panel mounting and used for a wide range of applications.

Rated voltage 250 VAC
Leakage current 0.25mA (FDV), 0.35mA (FDY)
Terminals 6.3mm push-on
Approvals UL, VDE (except FDV series)

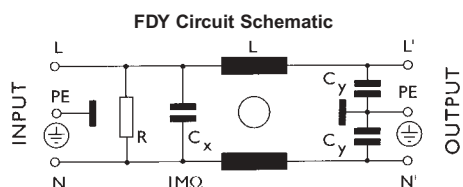
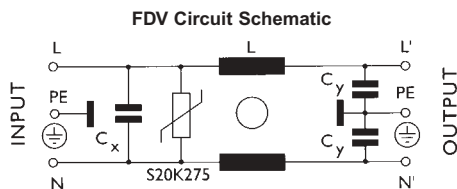
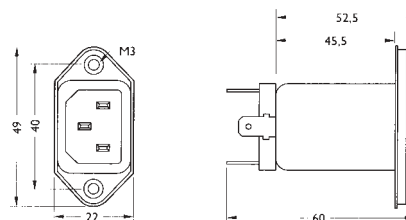
**Attenuation Graph for
FDY6Z**



Case size 19-0



Case size 9-0



Stock No.	Manf Ref ¹	Current	Case size	Unit Price		
				1-9	10-99	100+
6101126	FDV-1Z	1A	19-0	6.24	5.62	4.37
6101129	FDV-3Z	3A	19-0	6.24	5.62	4.37
6101132	FDV-6Z	6A	19-0	6.24	5.62	4.37
6101876	FDY-1Z	1A	19-0	4.48	4.03	3.14
6101879	FDY-3Z	3A	9-0	4.48	4.03	3.14
6101882	FDY-6Z	6A	9-0	4.48	4.03	3.14
6101885	FDY-10Z	10A	9-0	4.48	4.03	3.14