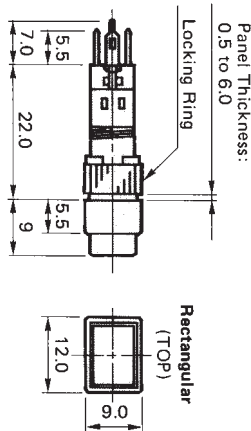


Push-buttons & Pilot Lights Ø8mm



0A range of miniature round, illuminated and non-illuminated push-buttons (momentary or latching) and pilot lights for Ø8mm panel cutouts in panels of 0.5-6mm thickness. Choice of five coloured lens and super bright LED's or buttons. Manufactured to meet all worldwide standards.

Contact arrangement	SPDT N/O
Voltage max.	250VAC/DC
Rated thermal current	3A
Min. switching capacity	1mA at 5VAC/DC
IP Rating	IP40
Terminals	Solder type
Temperature	-25°C to +55°C
Approvals	UL, CSA, C-UL

Note:
External resistors must be used with LED's.
For 6VDC use 200 ohm, 12VDC use 510 ohm, 24VDC use 1k1 ohm.
Yellow LED is used with white lens.

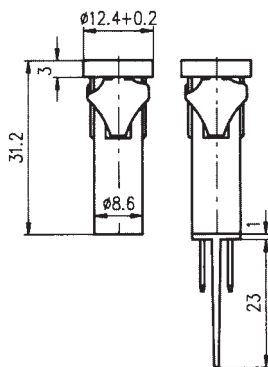
For complete illuminated pushbuttons and pilot lights specify:
Operator (momentary or latching)
+ lens + LED

For complete non-illuminated pushbuttons:
Operator (momentary or latching)
+ button

For complete pilot light specify:
Operator (pilot light) + lens + LED

Stock No.	Manf Ref ¹	Type	Colour	Contacts	Unit Price		
					1-4	5-9	10-24
Operator							
5502216	AL8MM100	MOMENTARY		1N/O	3.33	3.23	3.13
5502219	AL8MA100	LATCHING		1N/O	3.63	3.52	3.41
5502222	AL8MP00	PILOT LIGHT			1.47	1.43	1.38
Lens							
5502225	AL8MLK1G		GREEN		0.83	0.81	0.78
5502228	AL8MLK1R		RED		0.83	0.81	0.78
5502231	AL8MLK1Y		YELLOW		0.83	0.81	0.78
5502234	AL8MLK1W		WHITE		0.83	0.81	0.78
5502237	AL8MLK1A		AMBER		0.83	0.81	0.78
Led's							
5502240	LADSG		GREEN		1.24	1.20	1.17
5502243	LADSR		RED		1.24	1.20	1.17
5502246	LADSA		AMBER		1.24	1.20	1.17
5502249	LADSY		YELLOW		1.24	1.20	1.17
Buttons							
5502252	AB8MBK1G		GREEN		0.83	0.81	0.78
5502255	AB8MBK1R		RED		0.83	0.81	0.78
5502258	AB8MBK1Y		YELLOW		0.83	0.81	0.78
5502261	AB8MBK1W		WHITE		0.83	0.81	0.78
5502264	AB8MBK1B		BLACK		0.83	0.81	0.78

10mm Neon Indicators



'Snap-in' panel mounting neon indicators in a 10mm body. Available in three colours.

Voltage	230VAC
Terminals	6.3mm push-on
Panel cut-out	10mm
Panel thickness	0.7mm - 2.5mm

Stock No.	Manf Ref ¹	Type	Unit Price		
			1-4	5-9	10-24
6921001	SL656TZ1	RED	0.53	0.50	0.48
6921004	SL656TZ2	AMBER	0.53	0.50	0.48
6921007	SL656TZJ	GREEN	0.70	0.67	0.63

30mm Push Button Screw Terminals

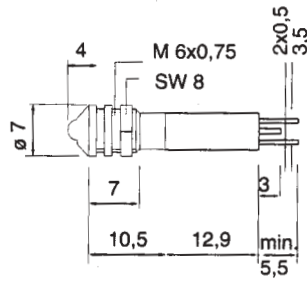


A rugged momentary pushbutton with 1N/O and 1N/C contact suitable for mounting in 30mm holes. Connection is via screw terminals.

Rated voltage	300Vac
Rated thermal current	10A at 230Vac 4A 24Vdc
Minimum load	5mA at 5Vdc
IP Rating	IP65 panel
Approvals	UL

Stock No.	Manf Ref ¹	Type	Unit Price		
			1-4	5-9	10-24
5502528	ABN-111G	ROUND MOMENTARY 1N/O + 1N/C GREEN	8.78	8.52	8.25

**Panel Mounted LED's
Ø6mm**

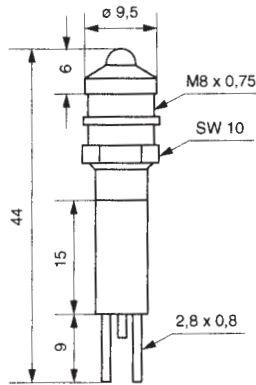


A range of Ø6mm panel mounting indicators with prominent LED in a bright chrome bezel. Choice of three colours in two voltages. The red LED offers superbright light output, green & yellow are standard.

Current consumption 30mA (12V), 18mA (24V)
 IP Rating IP65 (IP67 if sealing washer used)
 Terminals 2.8mm push-on, gold/positive, silver/negative
 Temperature -55°C to +70°C
 Panel cut-out / thickness 6mm ± 0.2 / 0.6 - 4mm
 Approvals UL, VDE, CE

Stock No.	Manf Ref ¹	Type	Colour	Unit Price		
				1-4	5-9	10-24
3701247	19020253	12VDC	RED	2.10	2.00	1.89
3701250	19020251	12VDC	GREEN	2.10	2.00	1.89
3701253	19020252	12VDC	YELLOW	2.10	2.00	1.89
3701256	19020353	24VDC	RED	2.10	2.00	1.89
3701259	19020351	24VDC	GREEN	2.10	2.00	1.89
3701262	19020352	24VDC	YELLOW	2.10	2.00	1.89

**Panel Mounted LED's
Ø8mm**

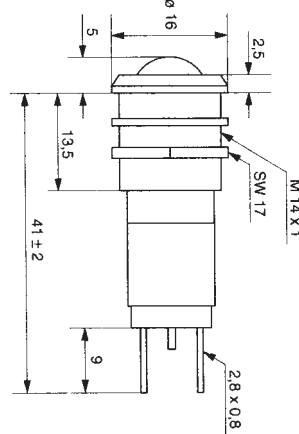


A range of Ø8mm panel mounting indicators with prominent LED in a bright chrome bezel. Choice of three colours in three voltages. The red LED offers superbright light output in the DC models, all others are standard.

Current consumption 17mA (DC), 3mA (AC)
 IP Rating IP65 (IP67 if sealing washer used)
 Terminals 2.8mm push-on, gold/positive, silver/negative
 Temperature -25°C to +60°C
 Panel cut-out / thickness 8mm ± 0.2 / 0.6 - 4mm
 Approvals UL, VDE, CE

Stock No.	Manf Ref ¹	Type	Colour	Unit Price		
				1-4	5-9	10-24
3701265	190A0253	12VDC	RED	2.10	2.00	1.89
3701268	190A0251	12VDC	GREEN	2.10	2.00	1.89
3701271	190A0252	12VDC	YELLOW	2.10	2.00	1.89
3701274	190A0353	24VDC	RED	2.10	2.00	1.89
3701277	190A0351	24VDC	GREEN	2.10	2.00	1.89
3701280	190A0352	24VDC	YELLOW	2.10	2.00	1.89
3701283	19510230	230VAC	RED	5.02	4.77	4.52
3701286	19510231	230VAC	GREEN	5.02	4.77	4.52
3701289	19510232	230VAC	YELLOW	5.02	4.77	4.52

**Panel Mounted LED's
Ø14mm**



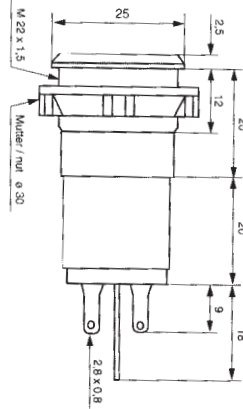
A range of Ø14mm panel mounting indicators with round LED in a bright chrome bezel. Choice of three colours in three voltages. The red LED offers superbright light output in the DC models, all others are standard. 230V model supplied with live terminal protection tube.

Current consumption 17mA (DC), 3mA (AC)
 IP Rating IP65 (IP67 if sealing washer used)
 Terminals 2.8mm push-on, gold/positive, silver/negative
 Temperature -25°C to +50°C
 Panel cut-out / thickness 14mm ± 0.2 / 0.6 - 9mm
 Approvals UL, CE

Stock No.	Manf Ref ¹	Type	Colour	Unit Price		
				1-4	5-9	10-24
3701292	19210253	12VDC	RED	3.50	3.33	3.15
3701295	19210251	12VDC	GREEN	3.50	3.33	3.15
3701298	19210252	12VDC	YELLOW	3.50	3.33	3.15
3701301	19210353	24VDC	RED	3.50	3.33	3.15
3701304	19210351	24VDC	GREEN	3.50	3.33	3.15
3701307	19210352	24VDC	YELLOW	3.50	3.33	3.15
3701310	19300230	230VAC	RED	7.10	6.75	6.39
3701313	19300231	230VAC	GREEN	7.10	6.75	6.39
3701316	19300233	230VAC	YELLOW	7.10	6.75	6.39



**Panel Mounted LED's
Ø22mm**

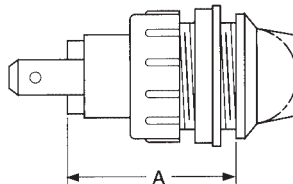


A range of Ø22mm panel mounting indicators with round LED in a bright chrome bezel. Choice of three colours in four voltages. A 24VDC version is available with a lamp test facility. 230V model supplied with live terminal protection tube.

Current consumption 38mA (12VDC), 19mA (24VDC)
6mA (130VAC), 4mA (230VAC)
IP Rating IP65 (IP67 if sealing washer used)
Terminals 2.8mm push-on, gold/positive, silver/negative
Temperature -25°C to +50°C
Panel cut-out / thickness 22mm ± 0.2 / 0.6 - 6mm
Approvals CE

Stock No.	Manf Ref ¹	Type	Colour	Unit Price		
				1-4	5-9	10-24
3701319	19530250	12VDC	RED	9.10	8.65	8.19
3701322	19530251	12VDC	GREEN	9.10	8.65	8.19
3701325	19530252	12VDC	YELLOW	9.10	8.65	8.19
3701328	19530350	24VDC	RED	9.10	8.65	8.19
3701331	19530351	24VDC	GREEN	9.10	8.65	8.19
3701334	19530352	24VDC	YELLOW	9.10	8.65	8.19
3701337	19570130	130VAC	RED	9.90	9.41	8.91
3701340	19570131	130VAC	GREEN	9.90	9.41	8.91
3701343	19570132	130VAC	YELLOW	9.90	9.41	8.91
3701346	19570230	230VAC	RED	9.90	9.41	8.91
3701349	19570231	230VAC	GREEN	9.90	9.41	8.91
3701352	19570232	230VAC	YELLOW	9.90	9.41	8.91
With lamp test						
3701355	195C0350M	24VAC/DCRED		9.90	9.41	8.91
3701358	195C0351M	24VAC/DCGREEN		9.90	9.41	8.91
3701361	195C0352M	24VAC/DCYELLOW		9.90	9.41	8.91

**Panel Indicator Lamps
Ø19mm**



A = 30.2mm

Two lamp holders and a range of lens for panel mounting. Suitable for E10 type screw thread lamps.

- C1090LE lamp holder - black nylon body and black nylon bezel
- C1090LP lamp holder - black nylon body and polished chrome bezel

Terminals 6.3mm push-on
Panel cut-out 19mm
Panel thickness 6.3mm max.
Note: Not suitable for use above 50V

Stock No.	Manf Ref ¹	Type	Unit Price		
			1-4	5-9	10-24
9061012	C1090LE	LAMP HOLDER	3.00	2.85	2.70
9061092	C1090LP	LAMP HOLDER	3.36	3.19	3.02
9061086	F0041-RED	DOMED LENS	0.56	0.53	0.50
9061071	F0090-RED	FLAT LENS	0.56	0.53	0.50
9061080	F0090-AMBER	FLAT LENS	0.56	0.53	0.50
9061074	F0090-BLUE	FLAT LENS	0.56	0.53	0.50
9061077	F0090-GREEN	FLAT LENS	0.56	0.53	0.50
9061083	F0090-CLEAR	FLAT LENS	0.56	0.53	0.50
3701394	1860325W3D	12V WHITE LAMP	3.70	3.52	3.33
3701385	1860335W3D	24V WHITE LAMP	4.50	4.28	4.05