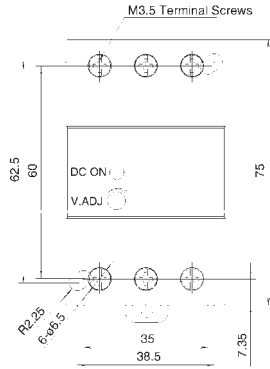


**15W Switch Mode Power Supplies**



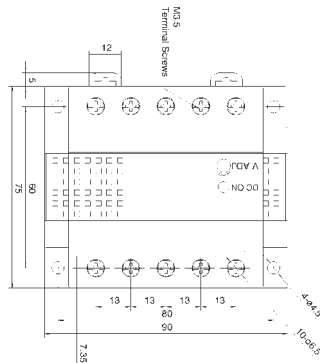
H = 75mm, W = 45mm, D = 95mm

Reliable and compact, fully featured, 15 watt switch mode power supplies for DIN rail mounting. Universal input voltage. Overcurrent, overvoltage & short circuit protected. Conforms to EMC directives EN50081-2 & EN50082-2, LDV directive EN60529, certified to EN60950.

- Input voltage 85-264VAC (50/60Hz), 105-370VDC
- Inrush current 50A max. (cold start)
- Efficiency at 24V 79% (typical)
- Power output 14.4W
- Voltage adjustments ± 10% (V. ADJ terminal on front)
- Rise time 200ms max. (at rated input & output)
- Temperature change 0.05% (-10°C to +50°)
- Ripple voltage 2% p-p max. (including noise)
- Overcurrent protection 105% min.
- Overvoltage protection 120% min. (Zener)
- Temperature range -10°C to + 60°C
- IP Rating IP20 (finger safe)
- Approvals UL, TUV, CE

Stock No.	Manf Ref'	Output	Unit Price		
			1-4	5-9	10+
5502003	PS5RB12	12VDC/1.2A	41.66	40.41	39.16
5502009	PS5RB24	24VDC/0.6A	41.66	40.41	39.16

**30W Switch Mode Power Supplies**



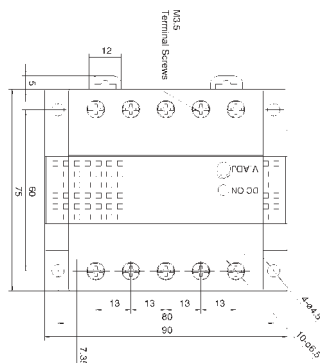
H = 75mm, W = 90mm, D = 95mm

Reliable and compact, fully featured, 30 watt switch mode power supplies for DIN rail mounting. Universal input voltage. Overcurrent, overvoltage & short circuit protected. Conforms to EMC directives EN50081-2 & EN50082-2, LDV directive EN60529, certified to EN60950.

- Input voltage 85-264VAC (50/60Hz), 105-370VDC
- Inrush current 50A max. (cold start)
- Efficiency at 24V 75% (typical)
- Power output 30W
- Voltage adjustments ± 10% (V. ADJ terminal on front)
- Rise time 200ms max. (at rated input & output)
- Temperature change 0.05% (-10°C to +50°)
- Ripple voltage 2% p-p max. (including noise)
- Overcurrent protection 105% min.
- Overvoltage protection 120% min. (auto reset)
- Temperature range -10°C to + 60°C
- IP Rating IP20 (finger safe)
- Approvals UL, TUV, CE

Stock No.	Manf Ref'	Output	Unit Price		
			1-4	5-9	10+
5502006	PS5RC12	12VDC/2.5A	63.32	61.42	59.52
5502012	PS5RC24	24VDC/1.3A	63.32	61.42	59.52

**50W Switch Mode Power Supplies**



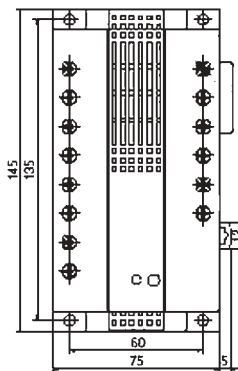
H = 75mm, W = 90mm, D = 95mm

Reliable and compact, fully featured, 50 watt switch mode power supplies for DIN rail mounting. Universal input voltage. Overcurrent, overvoltage & short circuit protected. Conforms to EMC directives EN50081-2 & EN50082-2, LDV directive EN60529, certified to EN60950.

- Input voltage 85-264VAC (50/60Hz), 105-370VDC
- Inrush current 50A max. (cold start)
- Efficiency at 24V 79% (typical)
- Power output 50.4W
- Voltage adjustments ± 10% (V. ADJ terminal on front)
- Rise time 200ms max. (at rated input & output)
- Temperature change 0.05% (-10°C to +50°)
- Ripple voltage 2% p-p max. (including noise)
- Overcurrent protection 105% min.
- Overvoltage protection 120% min. (auto reset)
- Temperature range -10°C to + 60°C
- Humidity 20% to 90% RH
- IP Rating IP20 (finger safe)
- Approvals UL, TUV, CE

Stock No.	Manf Ref'	Output	Unit Price		
			1-4	5-9	10+
5502015	PS5RD24	24VDC	71.66	69.51	67.36

**100W Switch Mode Power Supplies**



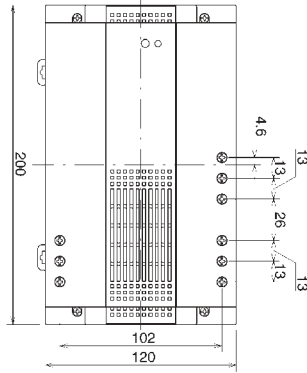
H = 75mm, W = 145mm, D = 95mm

Reliable and compact, fully featured, 100 watt switch mode power supplies for DIN rail mounting. Universal input voltage. Overcurrent, overvoltage & short circuit protected. Conforms to EMC directives EN50081-2 & EN50082-2, LDV directive EN60529, certified to EN60950.

- Input voltage 100-120VAC (50/60Hz), 200-240VAC(jumper)
- Inrush current 50A max. (cold start)
- Efficiency at 24V 80% (typical)
- Power output 100.8W
- Voltage adjustments ± 10% (V. ADJ terminal on front)
- Rise time 200ms max. (at rated input & output)
- Temperature change 0.05% (-10°C to +50°)
- Ripple voltage 2% p-p max. (including noise)
- Overcurrent protection 105% min.
- Overvoltage protection 120% min. (auto reset)
- Temperature range -10°C to + 60°C
- Humidity 20% to 90% RH
- IP Rating IP20 (finger safe)
- Approvals UL, TUV, CE

Stock No.	Manf Ref'	Output	Unit Price		
			1-4	5-9	10+
5502018	PS5RE24	24VDC	106.79	103.59	100.38

**240W Switch Mode Power Supplies**



H = 120mm, W = 200mm, D = 140mm

Reliable and compact, fully featured, 240 watt switch mode power supplies for DIN rail mounting. Universal input voltage. Overcurrent, overvoltage & short circuit protected. Conforms to EMC directives EN50081-2 & EN50082-2, LDV directive EN60529, certified to EN60950.

Input voltage	85-264VAC (50/60Hz), 110-350VDC
Inrush current	70A max. (cold start)
Efficiency at 24V	83% (typical)
Power output	240W
Voltage adjustments	± 10% (V. ADJ terminal on front)
Rise time	150ms max. (at rated input & output)
Temperature change	0.05% (-10°C to +50°)
Ripple voltage	2% p-p max. (including noise)
Overcurrent protection	105% min. (auto reset)
Overvoltage protection	120% min. (auto reset)
Temperature range	-10°C to + 60°C
Humidity	20% to 90% RH
IP Rating	IP20 (finger safe)
Approvals	UL, TUV, CE

Stock No.	Manf Ref <sup>1</sup>	Output	Unit Price		
			1-4	5-9	10+
5502021	PS5RG24	24VDC	240.45	233.24	226.02

**AC/DC Power Supply Linear, Regulated, 60W**



A high quality portable AC/DC linear, regulated power supply ideal for laboratory or workshop. Featuring a 3 digit panel meter, stepless adjustable constant voltage, adjustable constant current source, LED for constant current/voltage operating mode, short circuit protection, 4MM insulated terminals for test plugs. Supplied with a mains lead and carrying handle. L = 260, W = 95, H = 185MM

Input voltage	115-230VAC 50-60Hz
Output voltage (1)	0 - +15VDC
Output voltage (2)	0 - -15V / 0 - +30VDC
Max. output power	60W
Current output (1)	0 - 2A max.
Current output (2)	2A max.
Voltage load regulation	±0.2% ±2mV (zero to full mode)
Voltage line regulation	±0.2% ±2mV (±10% line variation)
Current load regulation	±0.5% ±250µA (zero to full mode)
Current line regulation	±0.5% ±250µA (±10% line variation)
Temperature change	±0.02% / °C (15min warm-up)
Ripple voltage	1mV RMS max.
Insulation voltage	2500VAC (input-output), 2000VAC (input-ground), 500VAC (output-ground)
Temperature range	0°C to +50°C

Stock No.	Manf Ref <sup>1</sup>	Type	Unit Price		
			1-4	5-9	10+
5701069	CPD1502	POWER SUPPLY	216.00	200.88	185.76



**AC / DC Inverter  
120W Continuous**



Compact 12VDC or 24VDC inverters which are used as a portable power source for applications such as TV, video and smaller household appliances for camping, boating & caravans. They are ideal for charging batteries for portable PC, cellular phones and small power tools.

Input voltage	11-15VDC or 21-30VDC
Output voltage	230VAC +5%/-10% 50Hz(modified sine wave)
Output power	> 120W continuous, 250W intermittent
Input connection	Cigarette lighter plug
Output connection	UK 13Amp socket
No load current	0.25A / 0.15A
Low battery alarm	10.7VDC / 21VDC
Low battery shutdown	10VDC / 20VDC
Protection	Input low voltage, Input over voltage over temperature, overload & short circuit
Mounting	Flange mounted
Dimensions	125 x 150 x 65mm

Stock No.	Manf Ref'	Input	Unit Price		
			1-4	5-9	10+
5701001	9984-12-UK-CIGAR	12VDC	79.00	73.47	67.94
5701003	9984-24-UK-CIGAR	24VDC	79.00	73.47	67.94

**AC / DC Inverter  
300W Continuous**



Compact 12VDC or 24VDC inverters which are used as a portable power source for applications such as TV, video and smaller household appliances for camping, boating & caravans. They are ideal for charging batteries for portable PC, cellular phones and small power tools. Battery crocodile clips with 1Mtr flying leads are included.

Input voltage	10-15VDC or 20-30VDC
Output voltage	230VAC +5%/-10% 50Hz(modified sine wave)
Output power	300W continuous, 500W intermittent
Input connection	Screw terminals
Output connection	UK 13Amp socket
No load current	0.25A / 0.15A
Low battery alarm	10.7VDC / 21VDC
Low battery shutdown	10VDC / 20VDC
Protection	Input low voltage, Input over voltage over temperature, overload & short circuit
Mounting	Flange mounted
Dimensions	190 x 150 x 65mm

Stock No.	Manf Ref'	Input	Unit Price		
			1-4	5-9	10+
5701006	9985-12-UK-CLIPS	12VDC	138.00	128.34	118.68
5701009	9985-24-UK-CLIPS	24VDC	138.00	128.34	118.68

**AC / DC Inverter  
600W Continuous**



Compact 12VDC or 24VDC inverters which are used as a portable power source for applications such as TV, video and smaller household appliances for camping, boating & caravans. They are ideal for charging batteries for portable PC, cellular phones and small power tools.

Input voltage	10-15VDC or 20-30VDC
Output voltage	230VAC +5%/-10% 50Hz(modified sine wave)
Output power	600W continuous, 1000W intermittent
Input connection	Terminal block (screw terminals)
Output connection	UK 13Amp socket
No load current	0.65A / 0.4A
Low battery alarm	10.7VDC / 21VDC
Low battery shutdown	10VDC / 20VDC
Protection	Input low voltage, Input over voltage over temperature, overload & short circuit
Mounting	Flange mounted
Dimensions	280 x 240 x 80mm

Stock No.	Manf Ref'	Input	Unit Price		
			1-4	5-9	10+
5701012	9986-12-UK	12VDC	174.00	161.82	149.64
5701015	9986-24-UK	24VDC	174.00	161.82	149.64

**AC / DC Inverter  
1000W Continuous**

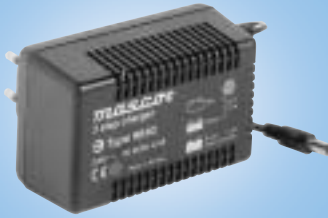


Compact 12VDC or 24VDC inverters which are used as a portable power source for applications such as TV, video and smaller household appliances for camping, boating & caravans. They are ideal for charging batteries for portable PC, cellular phones and small power tools.

Input voltage	10-15VDC or 20-30VDC
Output voltage	230VAC +5%/-10% 50Hz(modified sine wave)
Output power	1000W continuous, 2000W intermittent
Input connection	Terminal block (screw terminals)
Output connection	UK 13Amp socket
No load current	0.9A / 0.5A
Low battery alarm	10.7VDC / 21VDC
Low battery shutdown	10VDC / 20VDC
Protection	Input low voltage, Input over voltage over temperature, overload & short circuit
Mounting	Flange mounted
Dimensions	360 x 237 x 86mm

Stock No.	Manf Ref'	Input	Unit Price		
			1-4	5-9	10+
5701018	9987-12-UK	12VDC	400.00	372.00	344.00
5701021	9987-24-UK	24VDC	400.00	372.00	344.00

**3 Stage (Max. 2.7A)  
Lead Acid Battery Charger**



A 3 stage plug-in 12V rechargeable lead acid battery charger designed for safe and effective battery charging. After charging the battery to 80-90% of capacity the charger will transfer to a timer mode to boost fill the remaining 10-20%. At the end of the timing period the charge level is reduced to a safe level, which is the float or standby mode. If the voltage drops, the charger will automatically return to a recharge mode. When used in a back-up system the battery will always be maintained at maximum capacity. Indication of different modes by red, yellow & green LED's.

Input voltage	190-264VAC, 50/60Hz
Output voltage	14.7V (boost value), 13.8V (float value)
Output power	40W
Constant current	2.7A
Protection	Reverse polarity
Timer	2h ±30 min.
Temperature range	-10°C to +40°C
Dimensions	100 x 51 x 63mm
Safety standards	EN60335-1, EN60335-2-29, EN60065, EN60950
Approvals	Medical approved EN60601

Stock No.	Manf Ref <sup>1</sup>	Type	Unit Price		
			1-4	5-9	10+
5701024	9640-12V-UK	12V CHARGER	35.00	32.55	30.10

**3 Stage (Max. 4A)  
Lead Acid Battery Charger**

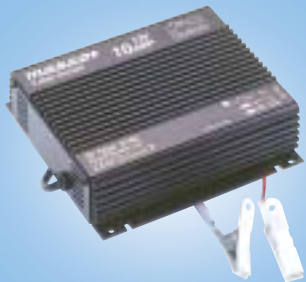


A 3 stage bench-top 12V rechargeable lead acid battery charger designed for safe and effective battery charging. After charging the battery to 80-90% of capacity the charger will transfer to a timer mode to boost fill the remaining 10-20%. At the end of the timing period the charge level is reduced to a safe level, which is the float or standby mode. If the voltage drops, the charger will automatically return to a recharge mode. When used in a back-up system the battery will always be maintained at maximum capacity. Indication of different modes by red, yellow & green LED's. A 3-pin IEC 320 connector is included.

Input voltage	90-264VAC, 50/60Hz
Output voltage	14.7V (boost value), 13.7V (float value)
Output power	60W
Constant current	4A
Protection	Reverse polarity (automatically resettable fuse)
Timer	2h ±30 min.
Temperature range	-10°C to +40°C
Input connection	IEC 320 3-pin connector (included)
Output connection	Battery clips, push-on terminals
Dimensions	135 x 80 x 44mm
Safety standards	EN60601-1, EN60335-2-29, EN60950
Approvals	Medical approved EN60601-1-2, UL2601-1

Stock No.	Manf Ref <sup>1</sup>	Type	Unit Price		
			1-4	5-9	10+
5701027	2040-12V-UK	12V CHARGER	50.00	46.50	43.00

**3 Stage (Max. 10A)  
Lead Acid Battery Charger**



A 3 stage 12V rechargeable lead acid battery charger designed for safe and effective battery charging. After charging the battery to 80-90% of capacity the charger will transfer to a timer mode to boost fill the remaining 10-20%. At the end of the timing period the charge level is reduced to a safe level, which is the float or standby mode. If the voltage drops, the charger will automatically return to a recharge mode. When used in a back-up system the battery will always be maintained at maximum capacity. Indication of different modes by red, yellow & green LED's.

Technical specification for 12V version

Input voltage	190-264VAC, 50/60Hz
Output voltage	14.7V (boost value), 13.7V (float value)
Constant current	10A
Protection	Reverse polarity & short circuit
Timer	4h ±30 min.
Temperature range	-25°C to +40°C
Output connection	Battery clips, push-on terminals
Dimensions	184 x 171 x 54mm
Safety standards	EN60601-1, EN60335-2-29
Approvals	Medical approved EN60601-1-2

Stock No.	Manf Ref <sup>1</sup>	Type	Unit Price		
			1-4	5-9	10+
5701030	9740-12V-UK	12V CHARGER	160.00	148.80	137.60
5701033	9740-24V-UK	24V CHARGER	160.00	148.80	137.60

**3 Stage (Max. 20A)  
Lead Acid Battery Charger**



A highly efficient (>83%) 3 stage 12V rechargeable lead acid battery charger designed for safe and effective battery charging. After charging the battery to 80-90% of capacity the charger will transfer to a timer mode to boost fill the remaining 10-20%. At the end of the timing period the charge level is reduced to a safe level, which is the float or standby mode. If the voltage drops, the charger will automatically return to a recharge mode. When used in a back-up system the battery will always be maintained at maximum capacity. Indication of different modes by red, yellow & green LED's. Also featuring a temperature compensated charge voltage-external heat sensor.

Input voltage	190-264VAC, 50/60Hz
Output voltage	14.7V (boost) 13.7V (float) (12V version), 29.4V (boost), 27.4V (float) (24V version)
Constant current	20A ±10% (12V version), 10A ±10% (24V version)
Protection	Reverse polarity & short circuit
Timer	4h ±30 min.
Temperature range	-25°C to +40°C
Output connection	Battery clips
Dimensions	148 x 210 x 58mm
Safety standards	EN60335-2-29, EN50081-1, EN50082-1, EN55014

Stock No.	Manf Ref <sup>1</sup>	Type	Unit Price		
			1-4	5-9	10+
5701036	2044-12V-UK	12V CHARGER	170.00	158.10	146.20
5701039	2044-24V-UK	24V CHARGER	170.00	158.10	146.20

**DC / DC Converters  
Linear, 40W**

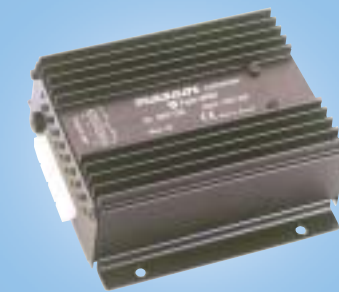


A compact, flange mounted 24V to 12V DC linear regulated converter designed to be used with a broad range of 12V equipment such as car stereo systems, laptops, portable TV's etc. Protected against reverse polarity 6.3A fuse, overvoltage output at approx. 16V, and short circuit. Common negative connection for input and output.

Input voltage	20-32VDC
Output voltage	13.5VDC
Output power	40W continuous, 66W intermittent
Load current	3A continuous, 5A intermittent
Load regulation	<10%
Line regulation	<5%
Temperature range	-20°C to +25°C
Input connection	6.3mm push-on
Output connection	6.3mm push-on
Dimensions	130 x 105 x 46mm
EMC standards	EN50081-1, EN50082-1

Stock No.	Manf Ref'	Type	Unit Price		
			1-4	5-9	10+
5701042	9062-24/12	24/12V CONVERTER	28.00	26.04	24.08

**DC / DC Converters  
Switch Mode, 81W**



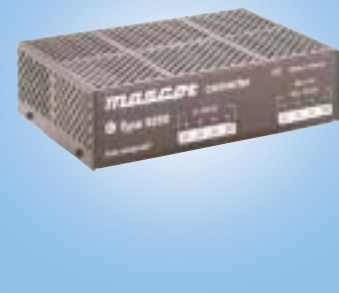
A range of compact, flange mounted DC switch mode, regulated converters. Protected against reversed polarity and overvoltage (transorb diode against transients). It will switch off automatically at input voltages over & under the specified range. Thermal protection, short circuit proof and overvoltage protection (output). The input & output are electrically separated from the chassis and the input is electrically separated from the output.

**Technical specification for 24/12V version**

Input voltage	18-32VDC
Output voltage	13.2VDC
Output power max.	81W continuous, 132W intermittent
Load current	6A continuous, 10A intermittent
Load regulation	5%
Line regulation	5%
Temperature range	-20°C to +30°C
Input connection	6.3mm push-on
Output connection	6.3mm push-on
Dimensions	135 x 119 x 46mm
EMC standards	EN50081-1, EN50082-1

Stock No.	Manf Ref'	Type	Unit Price		
			1-4	5-9	10+
5701045	8862-24/12	24/12V CONVERTER	53.00	49.29	45.58
5701048	8862-80/12	80/12V CONVERTER	53.00	49.29	45.58
5701051	8862-12/24	12/24V CONVERTER	53.00	49.29	45.58

**DC / DC Converters  
Switch Mode, 158W**



A range of compact, flange mounted DC switch mode, regulated converters. Protected against reversed polarity and overvoltage (transorb diode against transients). It will switch off automatically at input voltages over & under the specified range. Thermal protection, short circuit proof and overvoltage protection (output). The input & output are electrically separated from the chassis and the input is electrically separated from the output.

**Technical specification for 24/12V version**

Input voltage	18-32VDC
Output voltage	13.2VDC, 11.5-14.5VDC (internally adjustable)
Output power max.	158W continuous, 210W intermittent
Load current	12A continuous, 16A intermittent
Load regulation	2%
Line regulation	5%
Temperature range	-20°C to +25°C
Input connection	6.3mm push-on
Output connection	6.3mm push-on
Dimensions	215 x 151 x 62mm
EMC standards	EN50081-1, EN50082-1

Stock No.	Manf Ref'	Type	Unit Price		
			1-4	5-9	10+
5701054	9260-24/12	24/12V CONVERTER	82.00	76.26	70.52
5701057	9260-80/24	80/24V CONVERTER	82.00	76.26	70.52
5701060	9260-48/12	48/12V CONVERTER	82.00	76.26	70.52

**Power Supplies for 19"  
Euro Rack Systems, 60W**



A range of high quality DC power supplies designed for 19" Euro rack systems. They feature adjustable overvoltage protection, short circuit protection, remote control ON/OFF function, integral EMI filter and can operate on full load at an ambient temperature of 50°C. UL approved.

Input voltage	187-264VDC 50-60Hz
Output voltage	11-13.5VDC (12V version), 21-26 (24V version) both adjustable
Inrush current	<30A
Load current max.	5A (12V version), 2.5A (24V version)
Load regulation	0.2%
Line regulation	0.1%
Temperature change	±0.02% / °C
Ripple voltage	60mV p-p
Efficiency	83% (12V version), 87% (24V version)
Temperature range	0°C to +50°C
EMC standards	EN50081-1, EN50082-1
Dimensions	H = 3U, B = 8TE
Weight	550g
Safety standards	EN60950
Approvals	UL

Stock No.	Manf Ref'	Output	Unit Price		
			1-4	5-9	10+
5701063	SEE-60-08TE-12V	12V	125.00	116.25	107.50
5701066	SEE-60-08TE-24V	24V	125.00	116.25	107.50