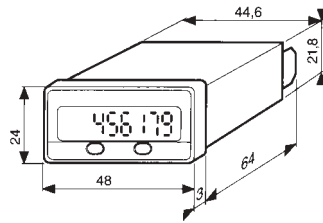


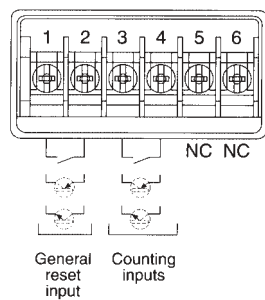
**Total/Partial Counter, LCD  
24 x 48**



Counter showing total or partial count in high resolution LCD displays offering a total counting capacity of 0 - 99,999,999 and a partial counting capacity of 0 - 999,999 in 7mm high digits. Solid state input model. Front panel mounted with protection to IP66 and housed in a 24 x 48mm case. Front panel reset to zero for partial count and electrical reset for total count. Powered by lithium battery giving 5 year life. Suitable for panels of between 1mm & 10mm thickness. Also available are various bezels and adaptors to complement panel mounting, please consult sales.

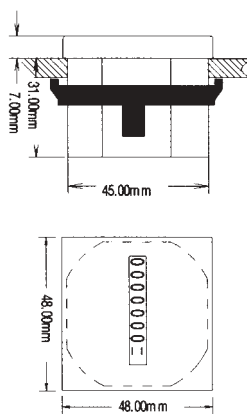
Display	8 digit LCD, 7mm high
Counting capacity	0 - 99,999,999
Counting speed	14 Hz or 100 Hz
Minimum pulse time	Low speed - 5ms, high speed - 5ms
Input	By volt-free contact or open collector NPN/PNP transistor (terms 3-4)
Front panel reset	Always enabled for partial counter
Reset input	By volt-free contact or open collector NPN transistor (terms 1-2)
Supply	Lithium battery (can be switched off by dip switch underneath the unit)
Temperature	-10° to +55°C
Front panel protection	IP66
Housing material	Self extinguishing ABS
Connections	Screw terminals
Panel cut-out	22 x 44.8mm
Depth behind panel	64mm

**Terminal identification**



Stock No.	Manf Ref'	Type	Unit Price		
			1-4	5-9	10+
3261782	87 610 240	2293	41.73	39.23	37.14

**Hour Counter  
48MM x 48MM**

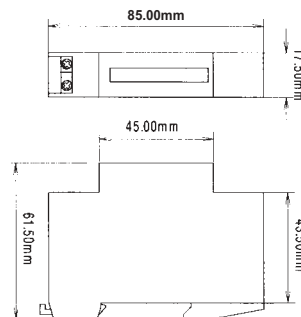


Electro-mechanical hours run counter with a 99,999 hour capacity. Front panel mounted 48 x 48mm, with protection to IP50. Attractive bezels are available to allow the counter to be fitted into pre-cut holes of either 55 x 55mm or 72 x 72mm.

Time ranges	0 - 99,999.99h
Display	7 digit, 4.4mm, decimal red / others white
Voltage	24, 115, 230 VAC, 50Hz & 12-48VDC
Power consumption	20mW at 12VDC, 1VA approx
Temperature	-15° to +55°C
Front panel protection	IP50
Connections	Universal: screw, solder, 6.35mm push-on
Panel cut-out	45 x 45mm
Depth behind panel	31mm

Stock No.	Manf Ref'	Voltage	Unit Price		
			1-4	5-9	10+
7851004	BW40.18.24VAC	24VAC	10.94	10.39	9.85
7851007	BW40.18.115VAC	115VAC	10.94	10.39	9.85
7851001	BW40.18.230VAC	230VAC	10.49	9.97	9.44
7851010	BW40.17.12-48VDC	12-48VDC	22.20	21.09	19.98
7851013	55 X 55MM BEZEL		0.53	0.50	0.48
7851016	72 X 72MM BEZEL		1.15	1.09	1.04

**Hour Counter  
1 Module Wide**

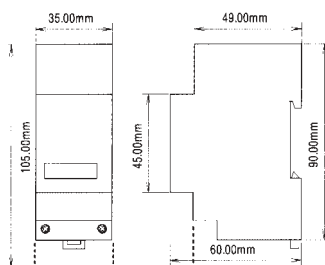


Non re-settable hours run counter with a 99,999 hour capacity. DIN rail or panel mounted in a 1 module wide housing. White wheel 'running' indicator when metering.

Time ranges	0 - 99,999.99h
Display	7 digit, 2.6mm, decimal red / others white
Voltage	115, 230 VAC, 50Hz
Power consumption	1.5VA approx
Temperature	-15° to +55°C
Front panel protection	IP50
Connections	Screw terminals
Housing	Self-extinguishing black thermo-plastic

Stock No.	Manf Ref'	Voltage	Unit Price		
			1-4	5-9	10+
7851019	BW70.18.115VAC	115VAC	13.84	13.15	12.46
7851022	BW70.18.230VAC	230VAC	13.84	13.15	12.46

**Hour Counter  
2 Module Wide**

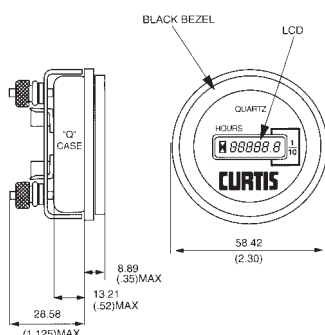


Non re-settable hours run counter with a 99,999 hour capacity. DIN rail or panel mounted in a 2 module wide housing. Flashing LED indication when metering.

Time ranges	0 - 99,999.9h
Display	7 digit, 4.4mm, decimal red / others white
Voltage	115, 230 VAC, 50Hz & 12-48VDC
Power consumption	20mW at 12VDC, 1.5VA approx
Temperature	-15° to +55°C
Front panel protection	IP20
Connections	Screw terminals
Housing	Self-extinguishing black thermo-plastic

Stock No.	Manf Ref'	Voltage	Unit Price		
			1-4	5-9	10+
7851025	BW70.29.115VAC	115VAC	13.84	13.15	12.46
7851028	BW70.29.230VAC	230VAC	13.84	13.15	12.46
7851031	BW70.29.12-48VDC	12-48VDC	13.84	13.15	12.46

**Solid State Hour Meter  
700 Series**

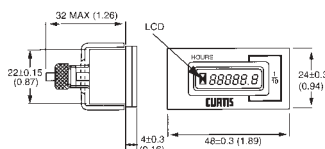
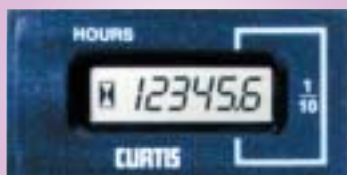


Non-re-settable solid state maintenance monitor with a round face designed to register true engine hours for internal combustion driven equipment with alternators. Highly reliable and ideally suited for construction machinery, generators, marine engines etc.

Nominal voltage	12-48VDC, 20-60VAC
Timing range	0 - 99,999.9h
Display	6 digit LCD, 5mm high
Leakage current max.	55µA
Temperature	-40° to +85°C
Mechanical shock	55g at 11ms (SAE J 1378)
Vibration	20g at 10-80Hz (SAE J 1378)
Memory	EEPROM (25 years +)
Connections	4.7mm push-on tags
Panel cut-out	Ø 52mm
Depth behind panel	45.72mm

Stock No.	Manf Ref'	Type	Unit Price		
			1-4	5-9	10+
5201001	CD700-150	R CASE	13.50	13.10	12.69

**Solid State Hour Meter  
700 Series**

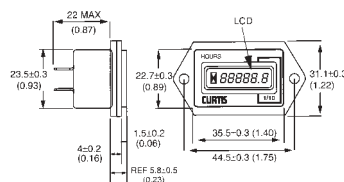
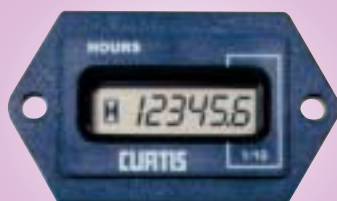


Non re-settable solid state maintenance monitor with a rectangular face designed to register true engine hours for internal combustion driven equipment with alternators. Highly reliable and ideally suited for construction machinery, generators, marine engines etc.

Nominal voltage	12-48VDC, 20-60VAC
Timing range	0 - 99,999.9h
Display	6 digit LCD, 5mm high, glass lens
Leakage current max.	55µA
Temperature	-40° to +85°C
Mechanical shock	55g at 11ms (SAE J 1378)
Vibration	20g at 10-80Hz (SAE J 1378)
Memory	EEPROM (25 years +)
Connections	4.7mm push-on tags
Panel cut-out	45.3mm x 22.3mm
Depth behind panel	32mm

Stock No.	Manf Ref'	Type	Unit Price		
			1-4	5-9	10+
5201004	CD700-350	D CASE	13.50	13.10	12.69

**Solid State Hour Meter  
700 Series**

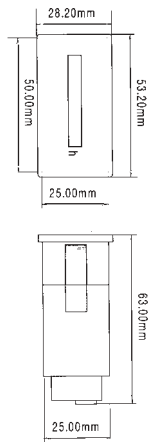


Non re-settable solid state maintenance monitor with a flanged mounted rectangular face designed to register true engine hours for internal combustion driven equipment with alternators. Highly reliable and ideally suited for construction machinery, generators, marine engines etc.

Nominal voltage	12-48VDC, 20-60VAC
Timing range	0 - 99,999.9h
Display	6 digit LCD, 5mm high
Leakage current max.	55µA
Temperature	-40° to +85°C
Mechanical shock	55g at 11ms (SAE J 1378)
Vibration	20g at 10-80Hz (SAE J 1378)
Memory	EEPROM (25 years +)
Connections	4.7mm push-on tags
Panel cut-out	36.8mm x 24.1mm
Depth behind panel	22mm

Stock No.	Manf Ref'	Type	Unit Price		
			1-4	5-9	10+
5201007	CD700-263	T CASE	14.50	14.07	13.63

**Hour Counter Without Zero Reset**



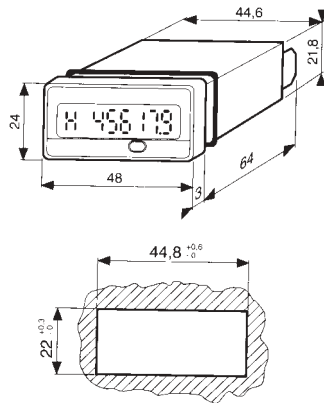
Non re-settable hours run counter with a 99,999 hour capacity. Flashing LED operation indicator. Panel mounted with a 53 x 25mm wide front plate.

Time ranges	0 - 99,999.9h
Display	7 digit, 4.4mm, decimal red / others white
Voltage	230 VAC, 50Hz & 12-48VDC
Power consumption	20mW at 12VDC, 1.5VA approx
Temperature	-15° to +55°C
Front panel protection	IP54 (front panel)
Connections	Universal: screw, solder, 6.35mm push-on
Housing	Self-extinguishing black thermo-plastic
Panel cutout	50 x 25mm

Hour counters are also available with zero reset, please consult sales.

Stock No.	Manf Ref'	Voltage	Unit Price		
			1-4	5-9	10+
7851034	BW30.18.230VAC	230VAC	12.81	12.17	11.53
7851037	BG30.18.12-48VDC	12-48VDC	26.08	24.78	23.47

**Hours Run Counters, LCD 24 x 48**

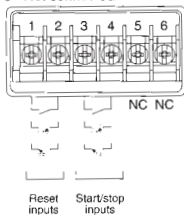


Hours run counters with high resolution LCD displays offering 4 time ranges in 6 digits. Two models triggered by switch contact or input voltage. Front panel mounted with protection to IP66 and housed in a 24 x 48mm case. Count can be reset via front panel (with option to inhibit) or electrically via the reset input. Powered by lithium battery giving 5 year life. Suitable for panels of between 1mm & 10mm thickness. Also available are various bezels and adaptors to compliment panel mounting, please consult sales.

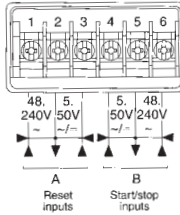
Time ranges	0 - 99,999.9h, 0 - 99,999.9min 0 - 99,999.9s, 0 - 99h 59m 59s
Stop/start input (2213)	By volt-free contact or open collector NPN/PNP transistor (terms 3-4)
Reset input (2213)	By volt-free contact or open collector NPN/PNP transistor (terms 1-2)
Stop/start input (2214)	2 voltage levels, 5-50VAC/VDC (terms 4-5) 48-240VAC (terms 5-6)
Reset input (2214)	2 voltage levels, 5-50VAC/VDC (terms 2-3) 48-240VAC (terms 1-2)
Supply	Lithium battery (can be switched off by dip switch underneath the unit)
Temperature	-10° to +55°C
Front panel protection	IP66
Housing material	Self extinguishing ABS
Connections	Screw terminals
Panel cut-out	22 x 44.8mm
Depth behind panel	64mm

**Terminal identification**

- 2213**  
 1 - Reset input  
 2 - Reset common  
 3 - Start/stop common  
 4 - Start/stop input  
 5 - Not connected  
 6 - Not connected

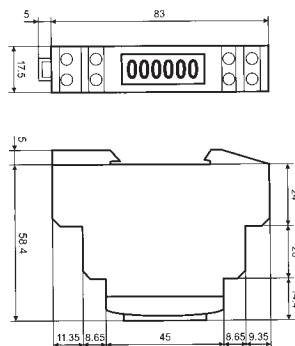


- 2214**  
 1 - Reset 48 to 240V ~  
 2 - Reset common  
 3 - Reset 5 to 50V ~ / ~  
 4 - 5 to 50V ~ ~  
 5 - Start/stop common  
 6 - 48 to 240V ~



Stock No.	Manf Ref'	Type	Display	Inputs	Unit Price		
					1-4	5-9	10+
3261776	87 610 140	2213	LCD	SWITCH/TRANSISTOR	37.97	35.69	33.79
3261779	87 610 150	2214	LCD	VOLTAGE	44.87	42.18	39.93

**Single Phase Energy Meter Class 1, 17.5mm**



DIN rail mounted 17.5mm single phase kWh meter which will provide accurate, secure billing of energy consumption. Class 1 precision and high power make it suitable for all potential applications e.g. caravan sites, harbour pontoons, jointly used factory units, energy management.

Counting capacity	5+1 digit display, 00000.0kWh, without reset
Rated voltage	230VAC, 50Hz
Rated current	20A max.
Starting current	20mA according to precision class 1
Power consumption	2W
Output contact	Available to signal external device
Temperature	-10°C to +45°C
Approvals	PTB according to IEC1036
<b>Function control</b>	
Green LED	Operating
Green/red flashing	Same pulse sequence as output
Cable connections	1mm~ - 6mm~

Stock No.	Manf Ref'	Type	Unit Price		
			1-4	5-9	10-24
2191402	AAC1D5D10CR2A00	METER	74.94	71.94	68.94