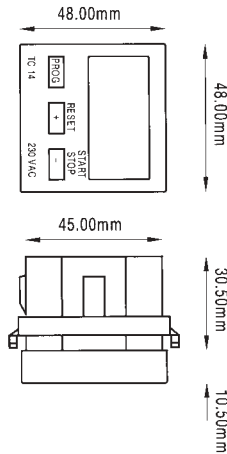


Digital Countdown Timer

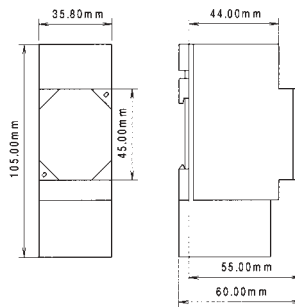


A panel mounted electronic count down timer with a single changeover contact capable of switching 8A at 230VAC. An operator can manually set and start the required process run time. At the end of the time (zero) the output relay changes state to signal the end of the process. Visual and acoustic time end signal. Typical applications include ovens, centrifuges, cleaning tanks, food mixers.

Supply voltage 230 VAC, others on request
 Timing accuracy Quartz \pm 3s over 24hours
 Contact rating 8A at 230VAC
 Relay output Single pole changeover
 Power consumption 1.5 VA
 Timing ranges 9h 59m 59s, in one sec intervals
 Connections Screw clamps
 Temperature -5°C to + 50°C
 Accessories Bezels available for fitting to 72 x 72 mm holes

Stock No.	Manf Ref ¹	Type	Unit Price		
			1-4	5-9	10+
7851040	TC14.230VAC	230VAC TIMER	38.33	36.41	34.50

Mechanical Time Switch

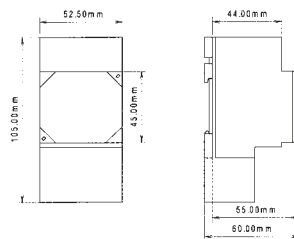


DIN rail mounted slim 35mm mechanical time switch. 24hr programming with easy to set with captive setting tappets. On/off auto slider.

Supply voltage 230 VAC, 50-60Hz, others on request
 Timing accuracy Quartz \pm 1-5s over 24hours
 Contact rating 16A at 250VAC
 Relay output Single pole changeover, AgCdO
 Power consumption 2 VA
 Minimum switching 30mins
 Connections Screw clamps
 Temperature -5°C to + 50°C
 Housing Self-extinguishing black thermo-plastic

Stock No.	Manf Ref ¹	Type	Unit Price		
			1-4	5-9	10+
7851043	VS20.18.230VAC	230VAC	21.54	20.46	19.39

Mechanical Time Switch

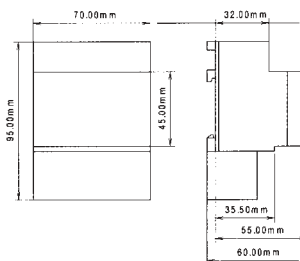


DIN rail mounted mechanical time switch featuring an analogue clock display. 24hr programming with easy to set with captive setting tappets. On/off auto slider.

Supply voltage 230 VAC, 50-60Hz, others on request
 Timing accuracy Quartz \pm 1-5s over 24hours
 Contact rating 16A at 250VAC
 Relay output Single pole changeover, AgCdO
 Power consumption 2 VA
 Minimum switching 30mins
 Connections Screw clamps
 Temperature -5°C to + 50°C
 Housing Self-extinguishing black thermo-plastic

Stock No.	Manf Ref ¹	Type	Unit Price		
			1-4	5-9	10+
7851046	VS30.18.230VAC	230VAC	21.54	20.46	19.39

Mechanical Time Switch

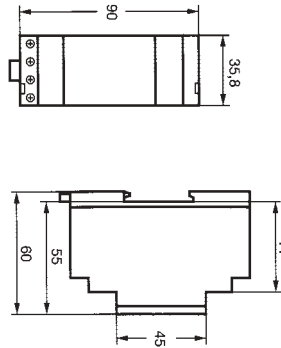


DIN rail mounted mechanical time switch featuring an analogue clock display. 24hr programming with 1/2 day omit feature e.g. output can be held off on tuesday p.m. Easy to set with captive setting tappets. On/off auto slider.

Supply voltage 230 VAC, 50-60Hz, others on request
 Timing accuracy Quartz \pm 1-5s over 24hours
 Contact rating 16A at 250VAC
 Relay output Single pole changeover, AgCdO
 Power consumption 2 VA
 Minimum switching 2hrs
 Connections Screw clamps
 Temperature -5°C to + 50°C
 Housing Self-extinguishing black thermo-plastic

Stock No.	Manf Ref ¹	Type	Unit Price		
			1-4	5-9	10+
7851049	VS40.28.230VAC	230VAC	34.62	32.89	31.16

**Programmable Time Switch
24 Hour/7 Day, Single Channel**



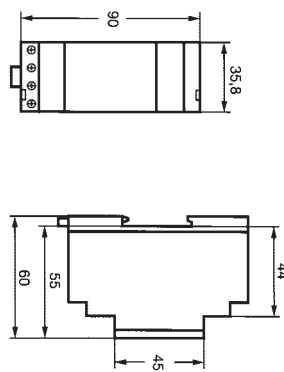
DIN rail/surface mounted single channel time switch for daily and weekly programming.

- 30 memory locations • On/off function
- Minimum interval of 1 min
- Unrestricted block-programming of days
- Can be programmed with supply disconnected

Supply voltage	230 VAC, 50-60Hz
Power back-up	> 6 years (lithium battery)
Timing accuracy	Quartz ± 1-5s over 24hours
Contact rating	16A at 250VAC
Relay output	Single pole normally open, AgCdO
Power consumption	1.5 VA
Housing	Self-extinguishing black thermo-plastic
Connections	Screw terminals
Temperature	-5°C to + 50°C

Stock No.	Manf Ref ¹	Type	Unit Price		
			1-4	5-9	10+
7851052	SC18.10.230VAC	ONE CHANNEL	39.49	37.52	35.54

**Programmable Time Switch
24 Hour/7 Day, Dual Channel**



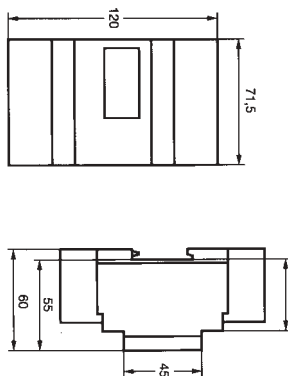
DIN rail/surface mounted dual channel time switch for daily and weekly programming with illuminated display.

- 30 memory locations • On/off, pulse functions
- Minimum interval of 1 min
- Unrestricted block-programming-days, channels & switching functions
- Unlimited data security by E² PROM
- Time switch can be programmed with supply disconnected

Supply voltage	230 VAC, 50-60Hz
Power back-up	> 6 years (lithium battery)
Timing accuracy	Quartz ± 1-5s over 24hours
Contact rating	16A at 250VAC
Relay output	2 pole changeover, AgCdO
Power consumption	1.5 VA
Housing	Self-extinguishing black thermo-plastic
Connections	Screw terminals
Temperature	-10°C to + 50°C

Stock No.	Manf Ref ¹	Type	Unit Price		
			1-4	5-9	10+
7851055	SC28.11.230VAC	DUAL CHANNEL	46.45	44.13	41.81

**Programmable Time Switch
Two & Four Channel**



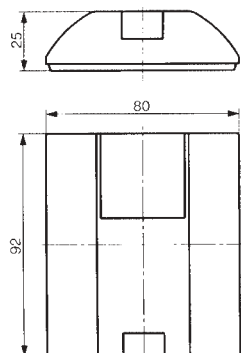
DIN rail/surface mounted 2 or 4 channel time switches for daily/weekly and yearly programming.

- 102 memory locations • On/off, pulse functions (01...59 sec)
- Minimum interval of 1 min • Permanently ON or OFF by date
- Unrestricted block-programming • Manual override
- Data storage key for fast program storage and transfer (save & carry)
- Time switch can be programmed with supply disconnected
- DCF 77 radio link with FU20

Supply voltage	230 VAC, 50-60Hz
Power back-up	> 10 years
Timing accuracy	Quartz ± 1-5s/day or DCF 77
Contact rating	10A at 250VAC
Relay output	2 C/O (2 channel), 3 C/O+1 N/O (4 channel)
Power consumption	2 VA
Housing	Self-extinguishing black thermo-plastic
Connections	Screw terminals
Temperature	-10°C to + 50°C

Stock No.	Manf Ref ¹	Type	Unit Price		
			1-4	5-9	10+
7851058	SC98.20.230VAC	2 CHANNEL	141.62	134.54	127.46
7851061	SC98.40.230VAC	4 CHANNEL	187.22	177.86	168.50

**Save & Carry
Programming Pack**



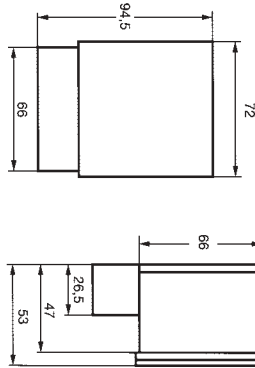
The Save & Carry programming package comprising of an adaptor, serial cable and software. Time settings can be programmed using PC software and then downloaded via adaptor into data storage key. The data storage key can then be taken to site whereby the programmed can be transferred into the time clock.

Power supply	Serial interface of the PC
Power consumption	<10mA
Temperature	+5°C to +45°C

Suitable for use with SC098 time switches

Stock No.	Manf Ref ¹	Type	Unit Price		
			1-24	25-99	100+
7851064	PP10	SAVE & CARRY	55.50	52.73	49.95
7851067	092.001.009	DATA STORAGE KEY	17.98	17.08	16.18

Panel & Surface Mounting Time Switches

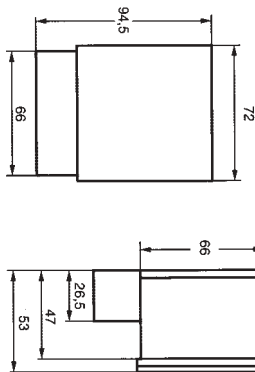


Front panel/surface mounted single or dual channel time switch for daily and weekly programming with 30 memory locations.

- On/off, pulse functions (1 sec)
 - Holiday switching 1-99 days
 - Unrestricted block-programming of days, channels & switch functions
 - Minimum interval of 1 min • Permanently ON or OFF by manual switch
 - Unrestricted block-programming • Manual override
 - Automatic summertime when date entered
 - Analogue display of switching program for current day (each channel)
- Supply voltage 230 VAC, 50-60Hz
 Power back-up > 6 years (lithium battery)
 Timing accuracy Quartz ± 1-5s/day
 Contact rating 16A at 250VAC
 Relay output 1 C/O (1 channel), 1 C/O+1 N/O (2 channel)
 Power consumption 1.5 VA
 Housing Self-extinguishing black thermo-plastic
 Connections Screw terminals
 Temperature -5°C to + 50°C

Stock No.	Manf Ref ¹	Type	Unit Price		
			1-4	5-9	10+
7851070	SC44.12.230VAC	1 CHANNEL	56.77	53.93	51.09
7851073	SC44.22.230VAC	2 CHANNEL	66.93	63.58	60.24

Panel & Surface Mounting Time Switches



Front panel/surface mounted single or dual channel time switch for daily and weekly programming with 110 memory locations.

- On/off, pulse functions (1-59 sec)
 - 16 weekly progs can be called up as often as required per channel
 - Unrestricted block-programming-days, channels & switching functions
 - Minimum interval of 1 min • Permanently ON or OFF by date
 - Unrestricted block-programming • Manual override
 - Automatic summertime when date entered • Holiday switching
 - Analogue display of switching program for current day (each channel)
- Supply voltage 230 VAC, 50-60Hz
 Power back-up > 10 years (lithium battery)
 Timing accuracy Quartz ± 1-5s/day
 Contact rating 10A at 250VAC
 Relay output 1 C/O (1 channel), 1 C/O+1 N/O (2 channel)
 Power consumption 2 VA
 Housing Self-extinguishing black thermo-plastic
 Connections Screw terminals
 Temperature -5°C to + 50°C

Stock No.	Manf Ref ¹	Type	Unit Price		
			1-4	5-9	10+
7851076	SC74.10.230VAC	1 CHANNEL	130.08	123.58	117.07
7851079	SC74.20.230VAC	2 CHANNEL	152.43	144.81	137.19

